

# Snap Disc Thermostat SOP

*For Grainfather and T500 boiler*

The following operation must be done by a **QUALIFIED ELECTRICIAN** only.

## Step 1



Make sure boiler is unplugged from power

## Step 2



Turn boiler upside down

## Step 3



Use a screw driver to unscrew the bottom plastic cover, remove this cover

## Step 4



Unscrew the white wire from the thermostat. Make sure to not let the loose wire touch anything, use electric tape to tape up the loose end of the wire.

### Step 5



Unscrew the blue wire from the thermostat. Cover the tip of this wire the same as in step 4.

### Step 6



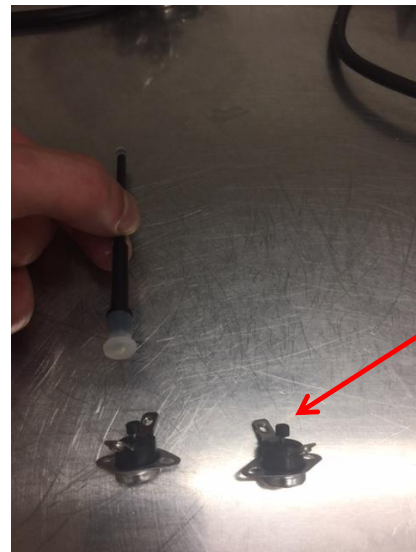
Unscrew the first screw that connects the thermostat to the boiler.

### Step 7



Unscrew the second screw that connects the thermostat to the boiler. Remove the thermostat from the boiler.

### Step 8



Thermostat switch

Remove the plastic rod from the old thermostat and push it onto the new thermostat switch, it should be a tight fit.

Next, reinstall the new thermostat following the same steps as above in reverse order. Make sure to tighten the screws as tight as possible.



Using a multi-meter, set it to 'Continuity'



Connect the red and black prongs to the screws attaching the wires to the thermostat. The multi-meter should 'beep' showing that current is running through the thermostat.

If it does not beep, press the reset switch on the thermostat and repeat the continuity test, if it still does not beep there is a problem with the circuit.