

Figure 1: Peatol Headstock - Modifications

Drill $7/32$ " diam; counterbore $5/16$ " diam (See text)

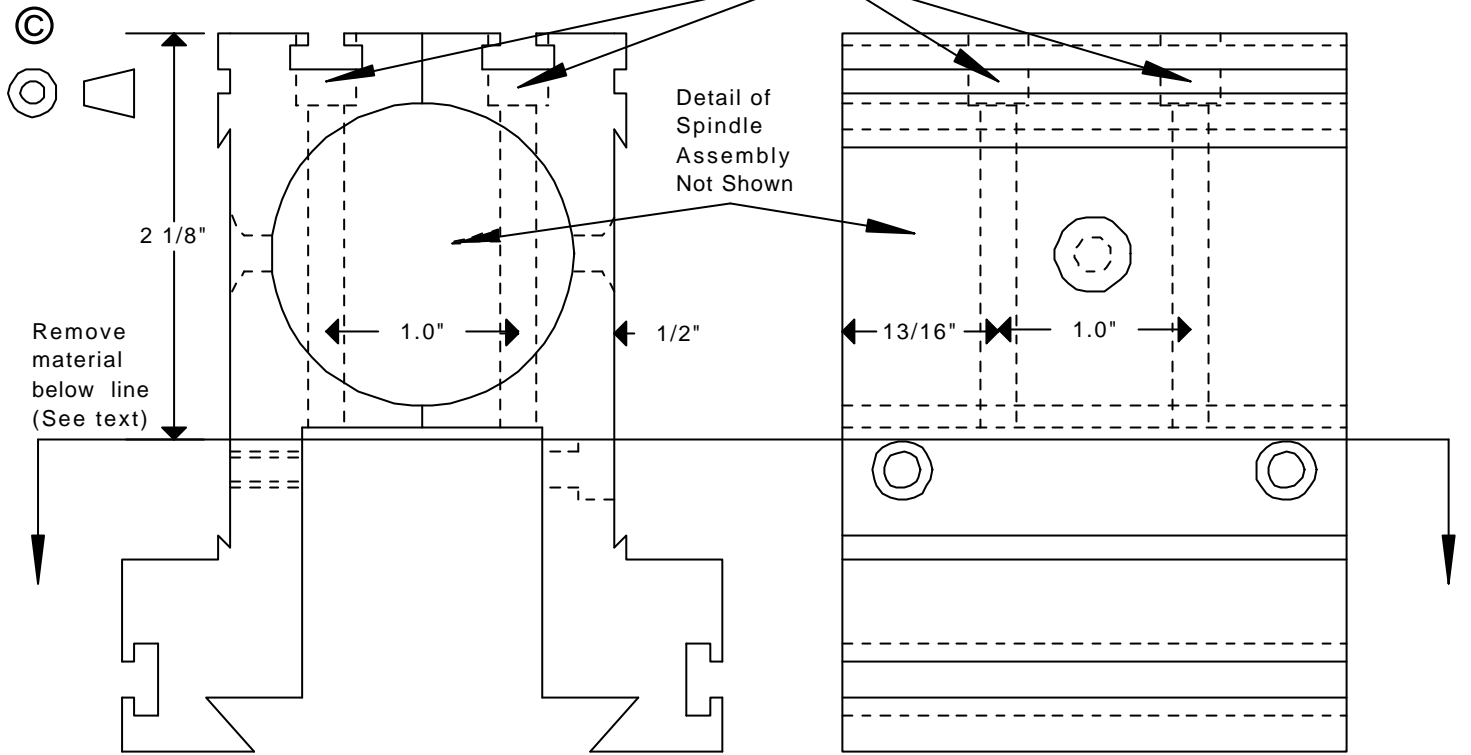


Figure 2: Base Plate
Material: $3/8$ " Aluminium

Drill 3.6mm, counterbore 6mm
 $7/32$ " diam

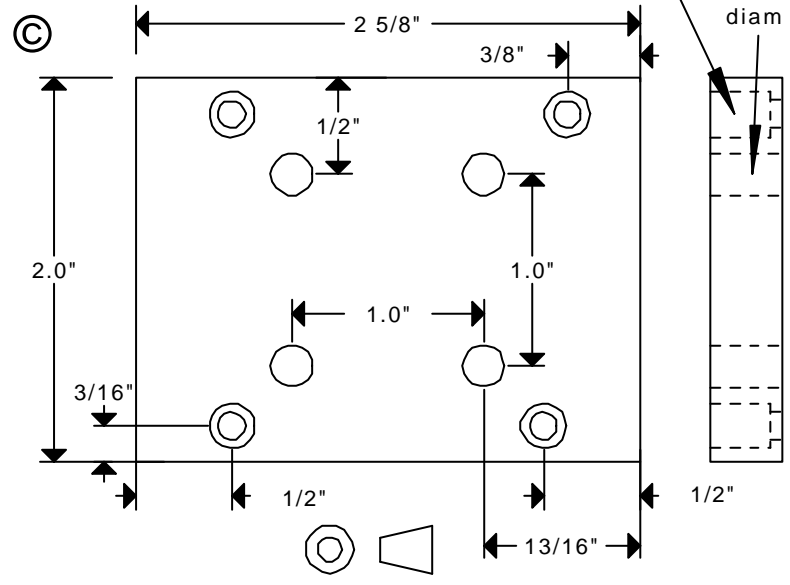


Figure 3: Brake Shoe
Material: $1/2$ " Aluminium

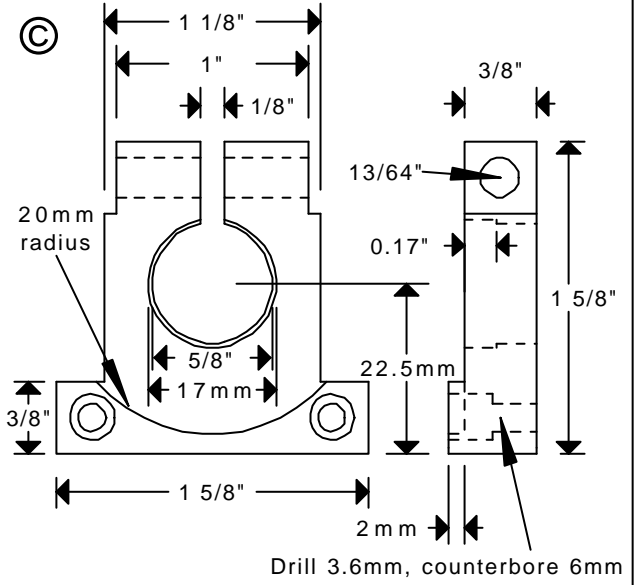


Figure 4: Pinch Bolt
Material: $5/16$ " steel

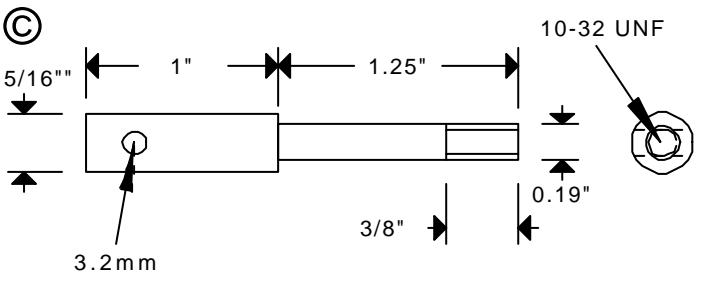


Figure 5: Tommy Bar
Material: $1/8$ " silver steel and brass

