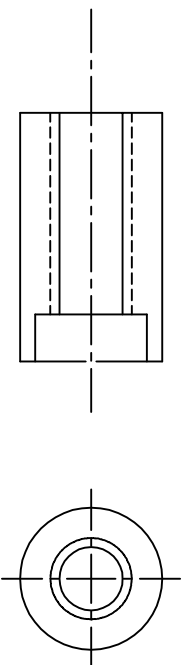
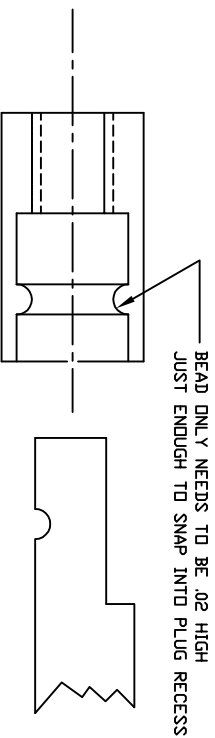


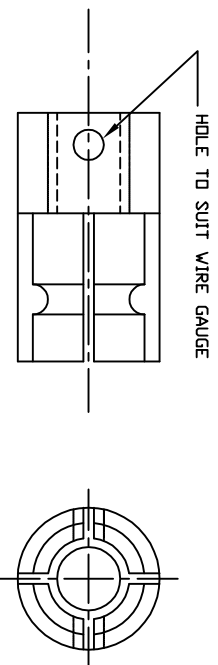
DO ALL MACHINING ON END OF BAR STOCK BEFORE CUTTING OFF  
 DIMENSION TO SUIT YOUR PARTICULAR PLUG  
 BEAD I.D. ABOUT .015 SMALLER THAN NOTCH IN PLUG CAP



DRILL & TAP  
 C/BORE UP TO SHOULDER OF BEAD  
 TAP O.D. NO LARGER THAN BEAD I.D.



MAKE LATHE C/BORING TOOL  
 TO CUT INTERNAL BEAD.  
 I MADE MY TOOL WITH A DREMEL CUTOFF WHEEL



CROSS DRILL AND SLIT  
 CUT OFF  
 TIN WIRE WITH SOLDER-INSERT INTO HOLE  
 MAKE SLOTTED SET SCREW AND LOCK WIRE IN PLACE

## SPARK PLUG BOOT

DORMAN VACU-TITE part # 47410 1/8" x 11/64"  
 Can possibly be purchased from auto parts store  
 I purchased mine online from RockAuto

