

Part:

General Assembly

Material

Principal = Boiler Plate

REV	DATE	DESCRIPTION

Title

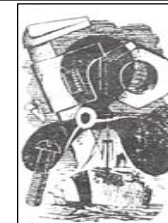
8" Scotch Marine Boiler

Scale

1 ; 2.5

Date:

Feb 2012



©

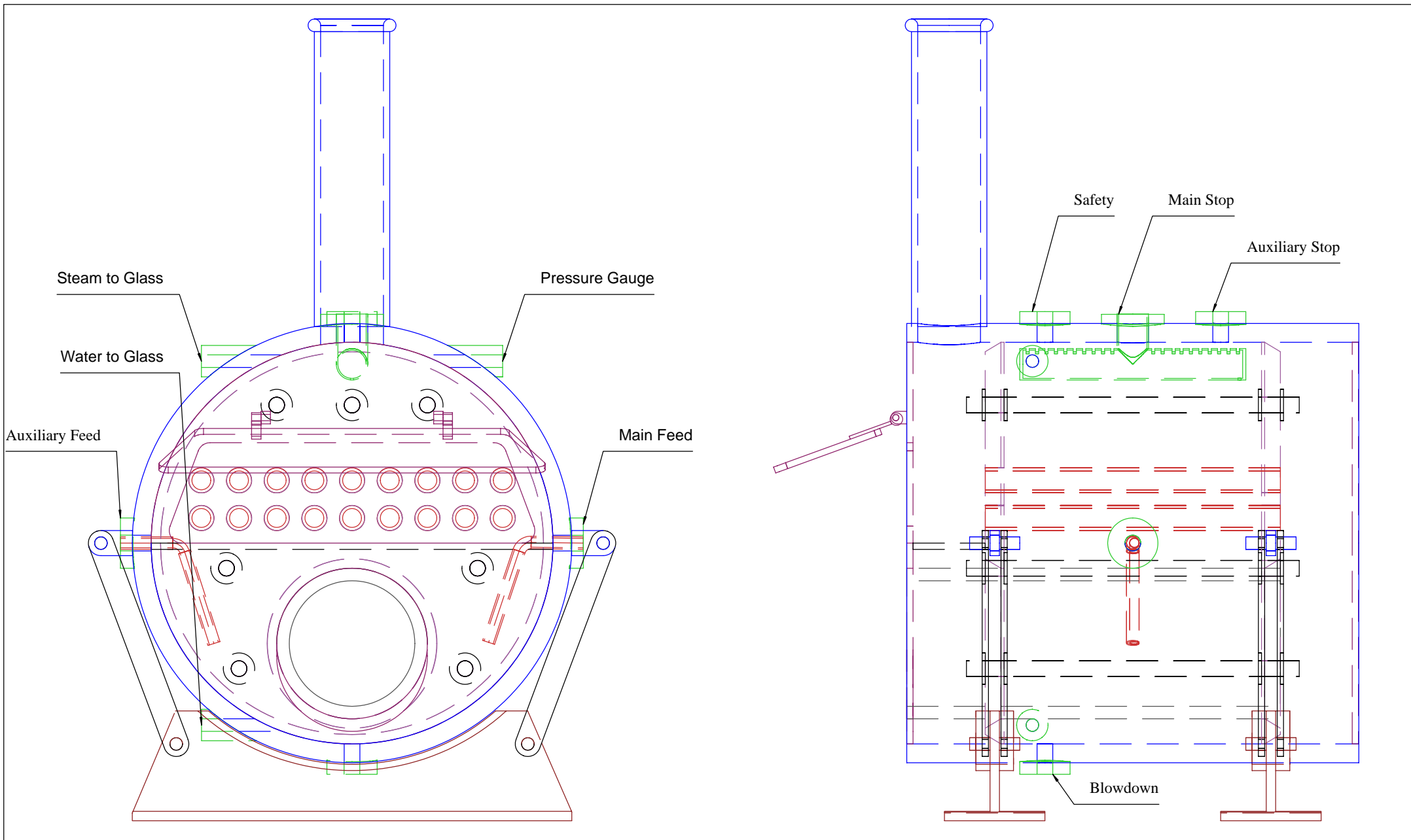
BOB HOLME

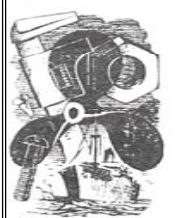
Engineering Service and Repair

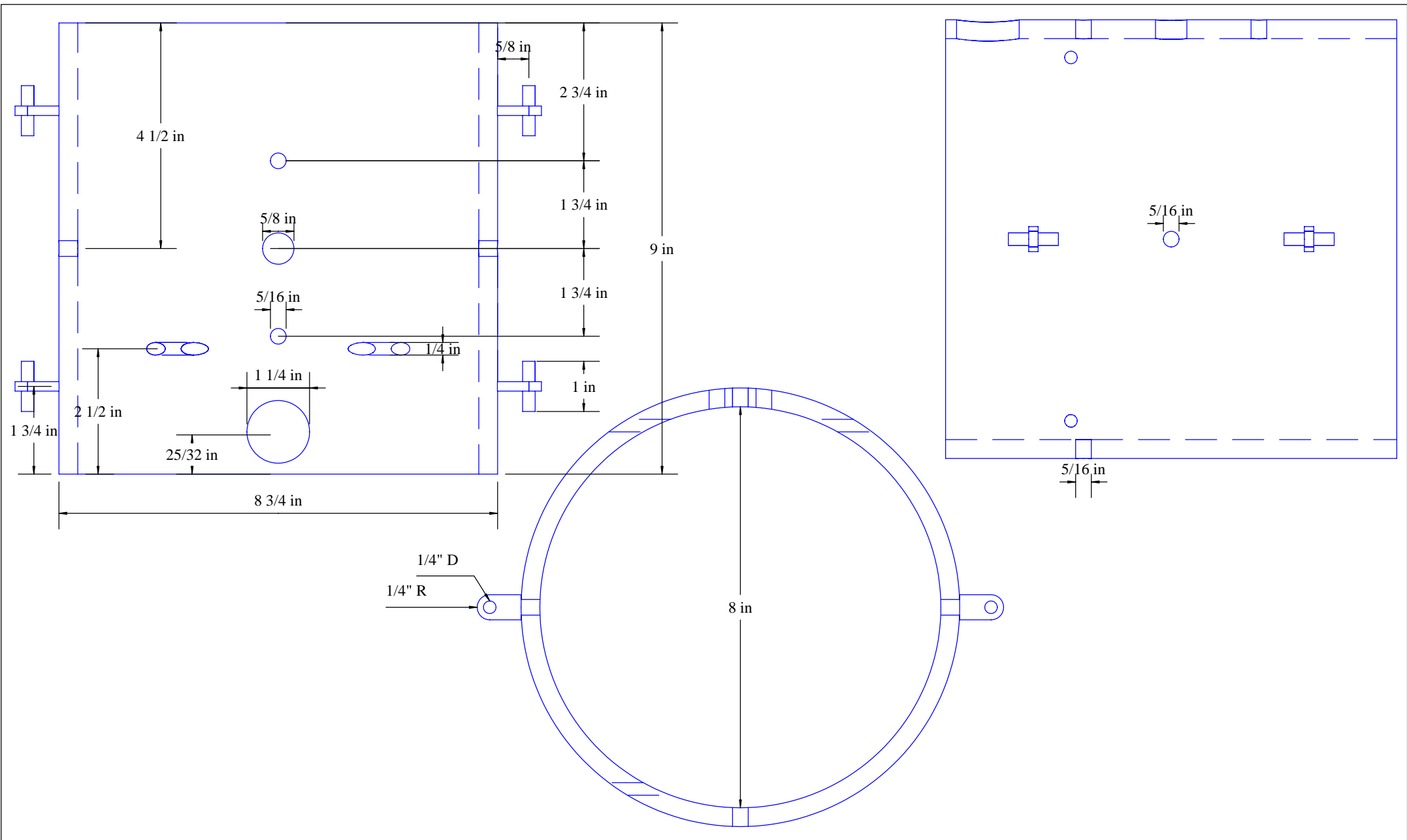
Mobile: AU 0466 979 291

Int 61+466 979 291

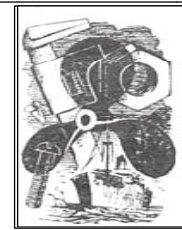
Email: Maryak@homemodelenginemachinist.com



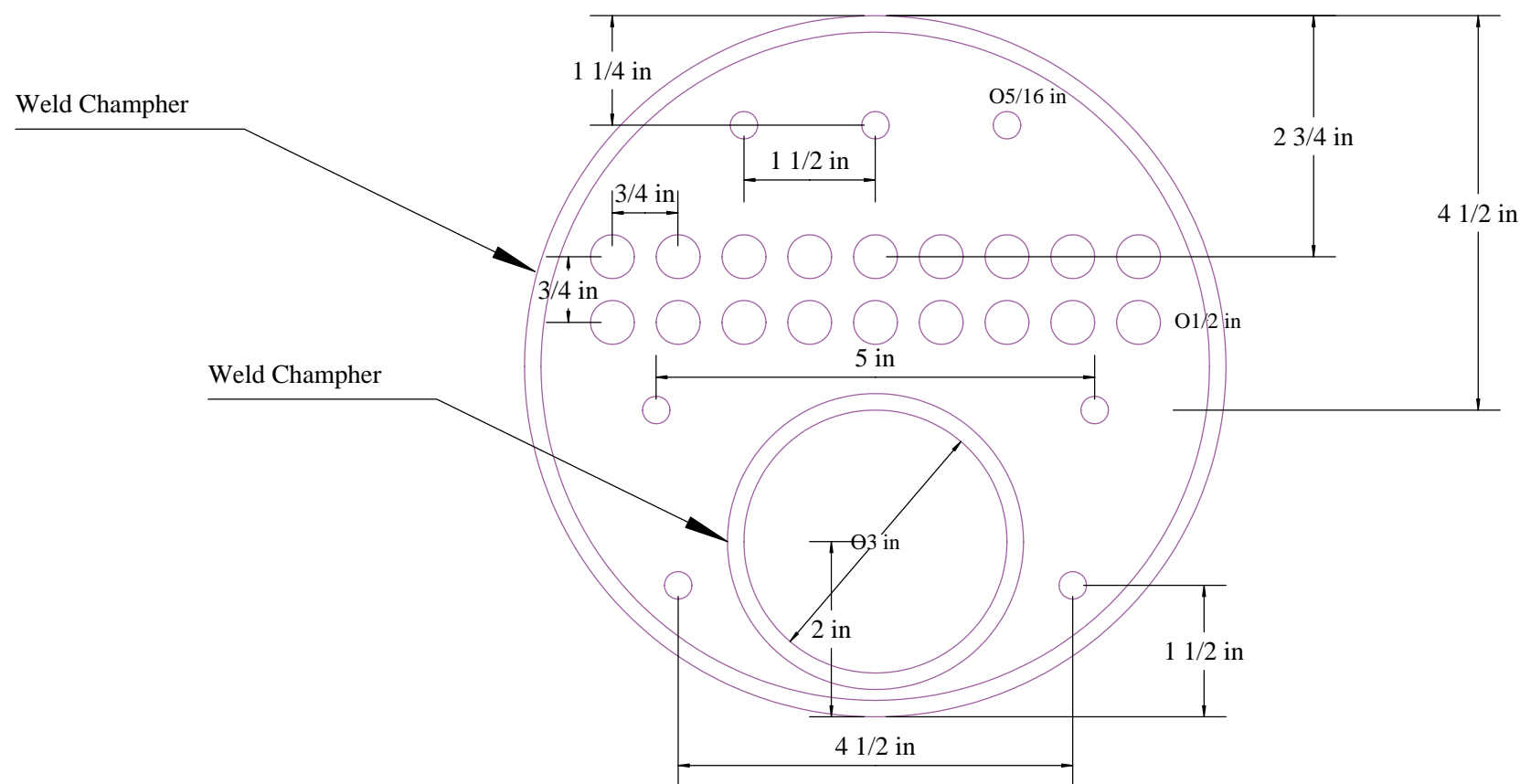
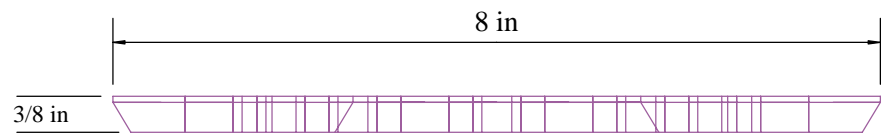
Part: Assembly			Material:					© BOB HOLME Engineering Service and Repair Mobile: AU 0466 979 291 Int 61+466 979 291 Email: Maryak@homemodelenginemachinist.com		
Title 8" Scotch Marine Boiler			Scale			Date:				
REV	DATE	DESCRIPTION								



Part:			Material	
Shell			Boiler Tube	
			Title	
			8" Scotch Marine Boiler	
			Scale	
			1 : 2.5	
			Date:	
			Fec 2012	
REV	DATE	DESCRIPTION		



© **BOB HOLME**
 Engineering Service and Repair
 Mobile: AU 0466 979 291
 Int 61+466 979 291
 Email: Maryak@homemodelenginemachinist.com



Part:

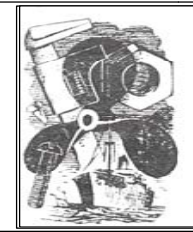
Tube Plate 2 off

Material

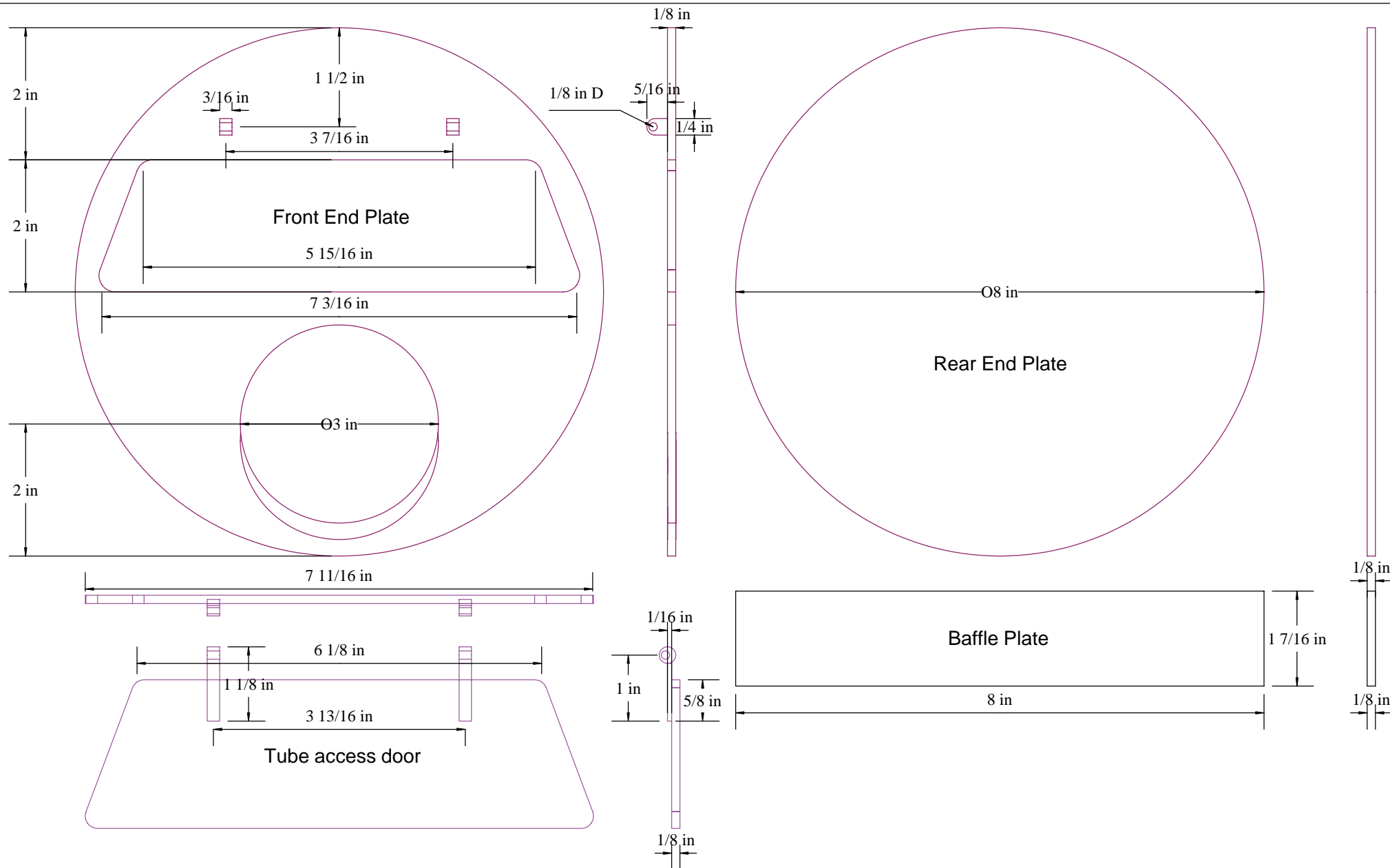
Boiler Plate

REV	DATE	DESCRIPTION

Title	8" Scotch Marine Boiler	
Scale	1 : 2	Date: Feb 2012



© **BOB HOLME**
 Engineering Service and Repair
 Mobile: AU 0466 979 291
 Int 61+466 979 291
 Email: Maryak@homemodelenginemachinist.com



Part:

End and Baffle Plates

Material

Mild Steel

REV	DATE	DESCRIPTION

Title

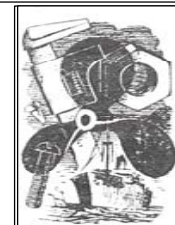
8" Scotch Marine Boiler

Scale

1 : 2

Date:

Feb 2012



©

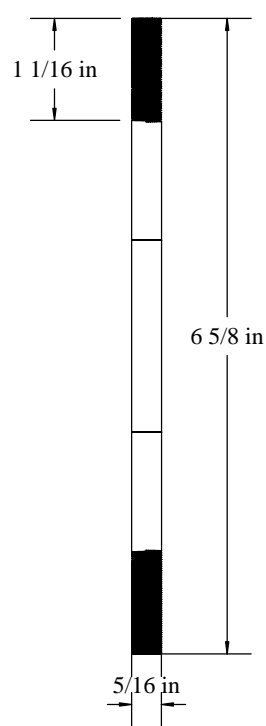
BOB HOLME

Engineering Service and Repair

Mobile: AU 0466 979 291

Int 61+466 979 291

Email: Maryak@homemodelenginemachinist.com



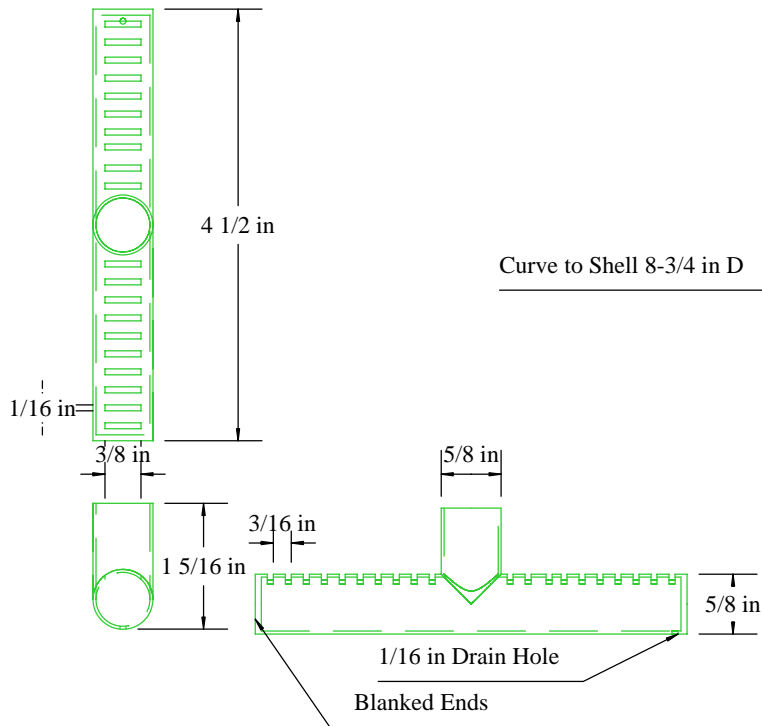
Stay Bolt 7 off



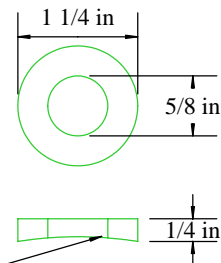
5/16" Nut 28 off



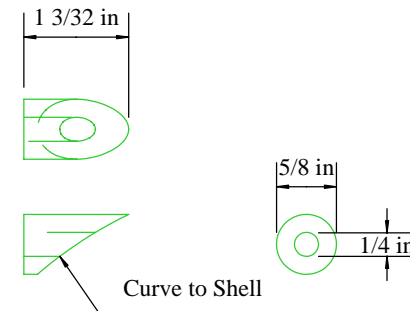
5/16" Machine Washer 28 off



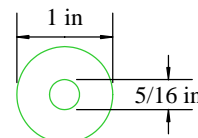
Dry Pipe



Main Stop Boss



Pressure & Water Gauge Boss
3 off



Auxiliary, Safety, Blowdown, Feed Boss
5 off

Part:

Fittings

Material

Mild Steel

REV	DATE	DESCRIPTION

Title

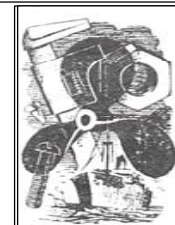
8" Scotch Marine Boiler

Scale

1 : 2

Date:

Feb 2012



©

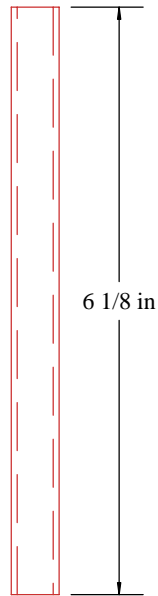
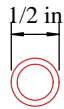
BOB HOLME

Engineering Service and Repair

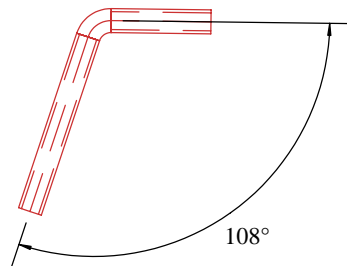
Mobile: AU 0466 979 291

Int 61+466 979 291

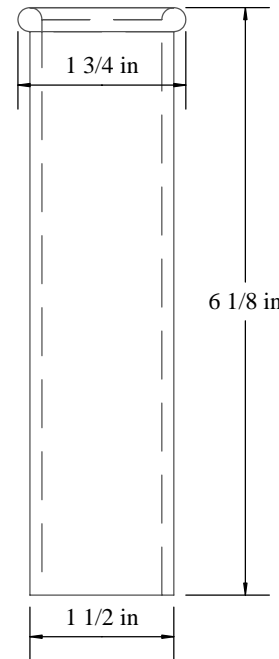
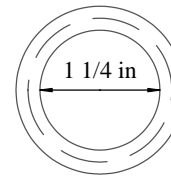
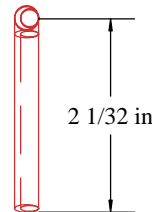
Email: Maryak@homemodelenginemachinist.com



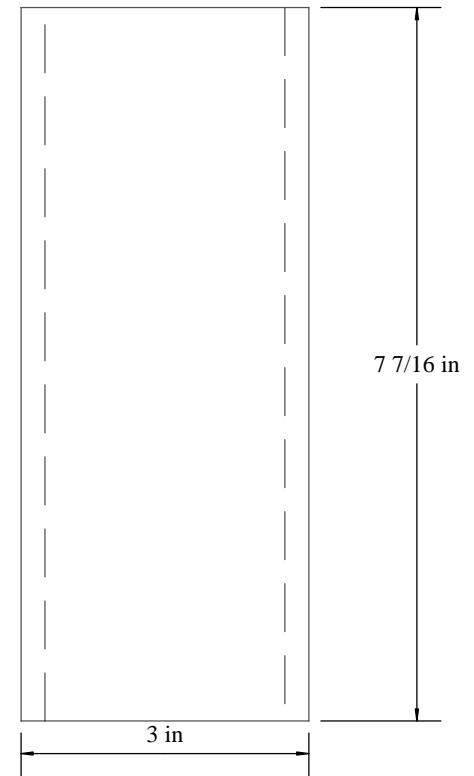
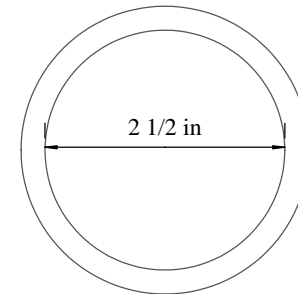
Boiler Tube 18 off



Feed Pipe 2 off



Funnel



Furnace

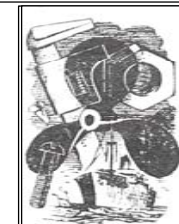
Part:

Tubes - Funnel and Furnace

Material

Tube & Feed - Copper

Funnel & Furnace - Boiler Tube



©

BOB HOLME

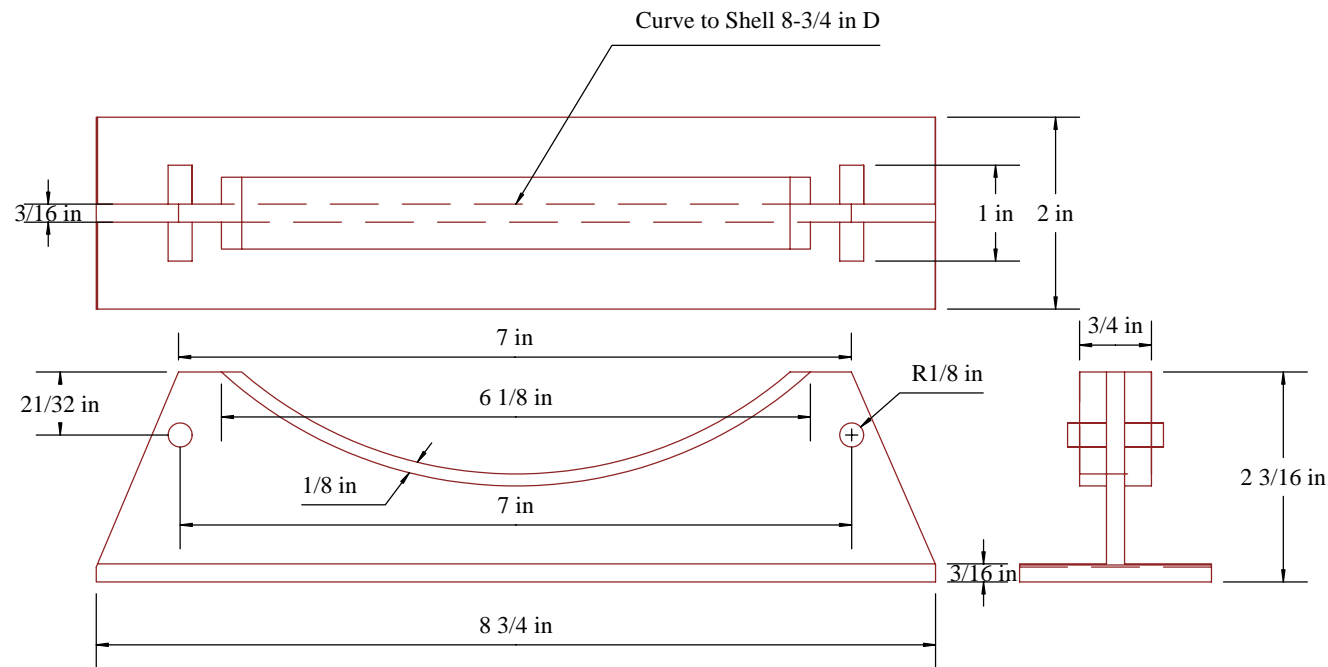
Engineering Service and Repair

Mobile: AU 0466 979 291

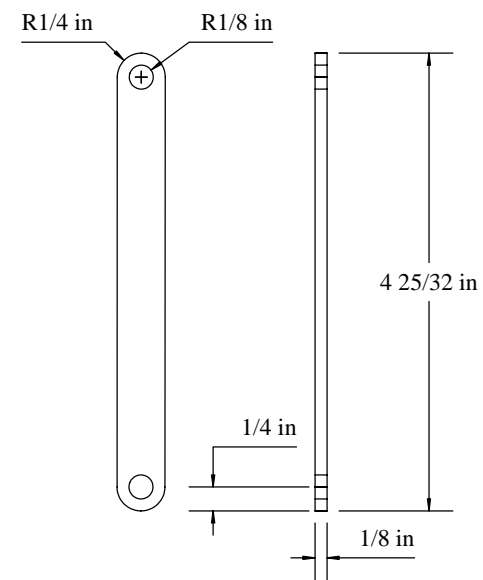
Int 61+466 979 291

Email: Maryak@homemodelenginemachinist.com

			Title	8" Scotch Marine Boiler	
REV	DATE	DESCRIPTION	Scale	1 : 2	Date: Feb 2012



Boiler Foot 2 off



Expansion and support rods 8off

Part:

Boiler Foot and Support/Expansion Rod

Material

Mild Steel

REV	DATE	DESCRIPTION

Title

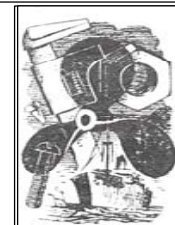
8" Scotch Marine Boiler

Scale

1 : 2

Date:

Feb 2012



©

BOB HOLME

Engineering Service and Repair

Mobile: AU 0466 979 291

Int 61+466 979 291

Email: Maryak@homemodelenginemachinist.com