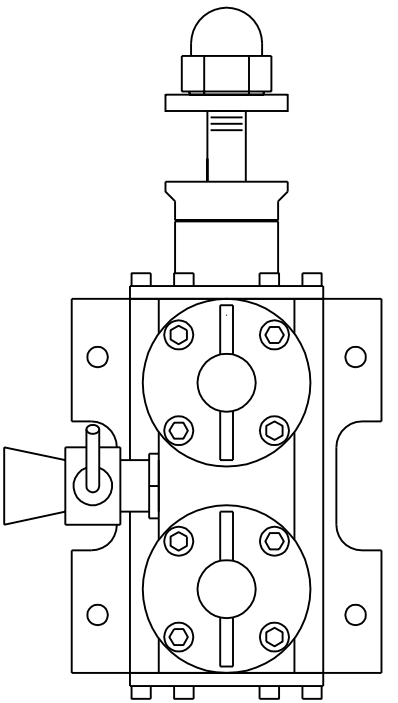


TIMING



LOBO 1.6 cc TWIN

Bore 0.375

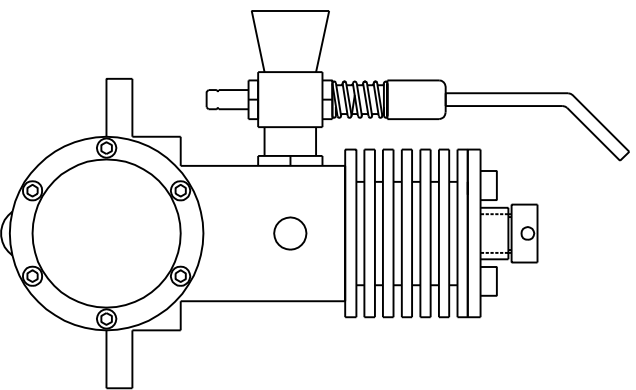
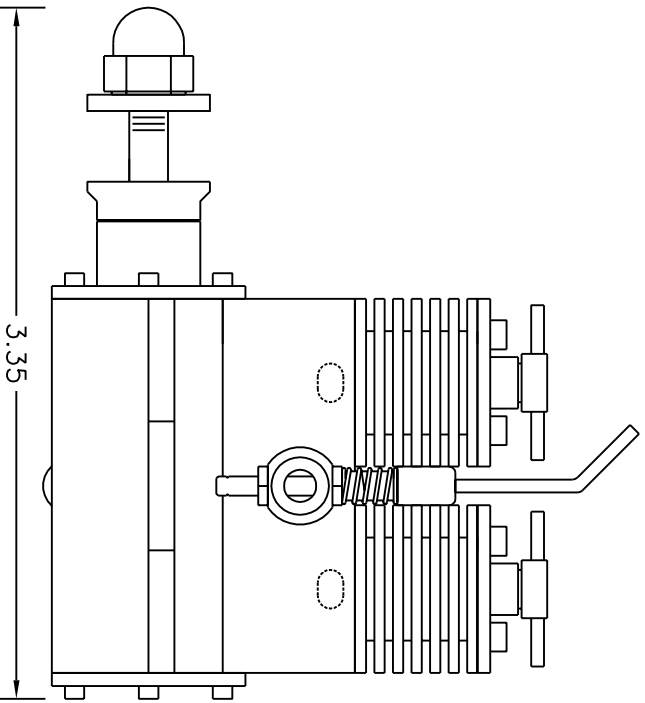
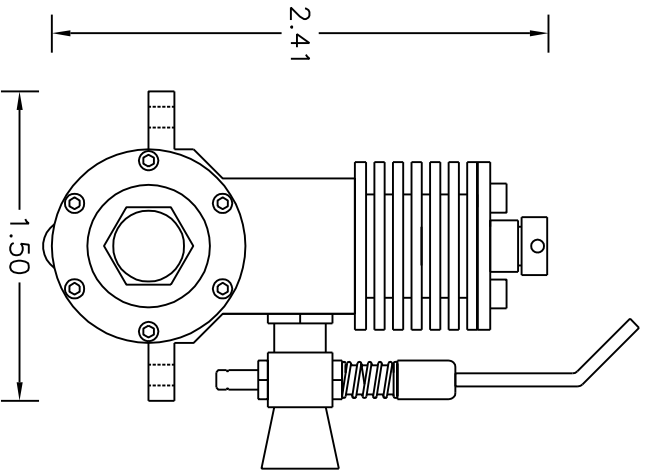
Stroke 0.438

Displacement 2 X 0.048 cu in

Total = 0.097 cu in = 1.58 cc

NOTES:

All dimensions in inches except as noted.
Exhaust port shown on some side as needle valve for illustration, but would normally be on opposite side. Engine can be assembled with intake or exhaust on either side as desired.



THIS DRAWING IS COPYRIGHT 2009 BY G.A.GRAHAM. THIS COPYRIGHT IS RELEASED TO THE PUBLIC DOMAIN FOR ANY NON COMMERCIAL USE. ANY REPRODUCTION OF THIS DRAWING MUST CARRY THIS COPYRIGHT NOTICE. IF YOU MAKE CHANGES TO THIS DRAWING, PLEASE ANNOTATE THE CHANGE WITH DATE, CHANGE, REASON AND AUTHOR.

SCALE 1:1
THIRD ANGLE

GAIL GRAHAM
"Coil In NM"
REV E
FEB 9,2010

LOBO PUP TWIN
SHEET 1
OUTLINE AND SPECIFICATIONS