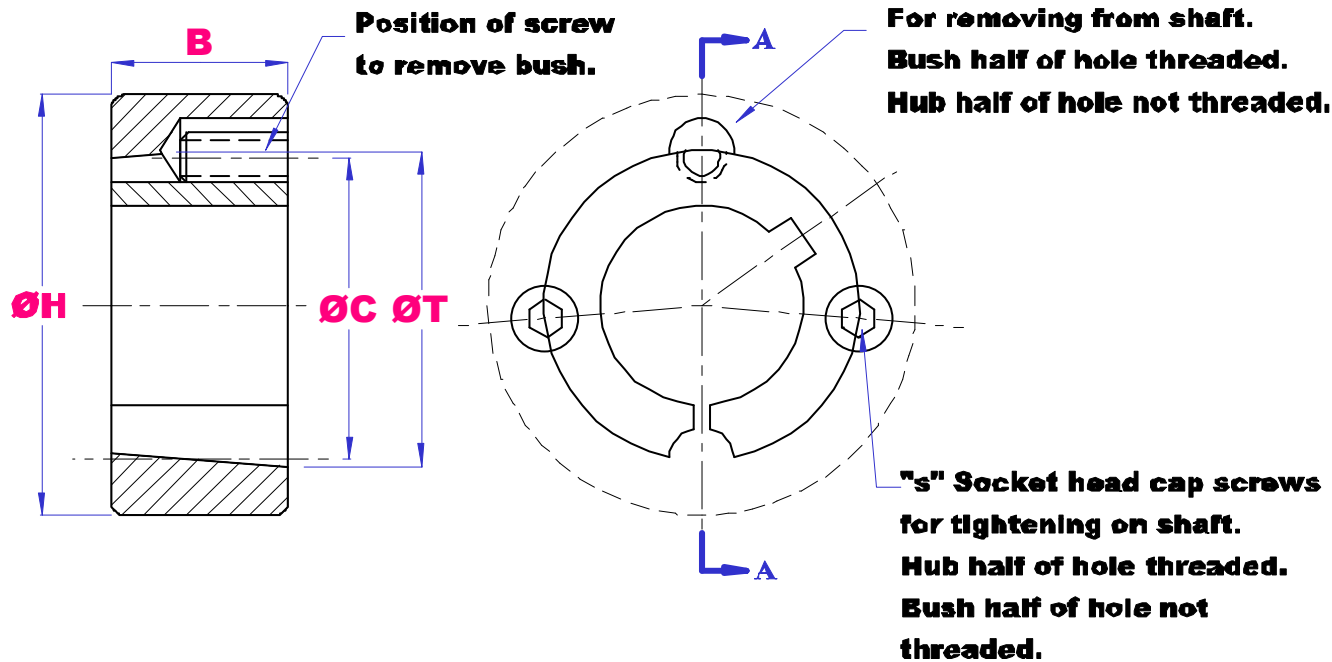




TAPERLOCK BUSH DIMENSIONS 1008 – 3030



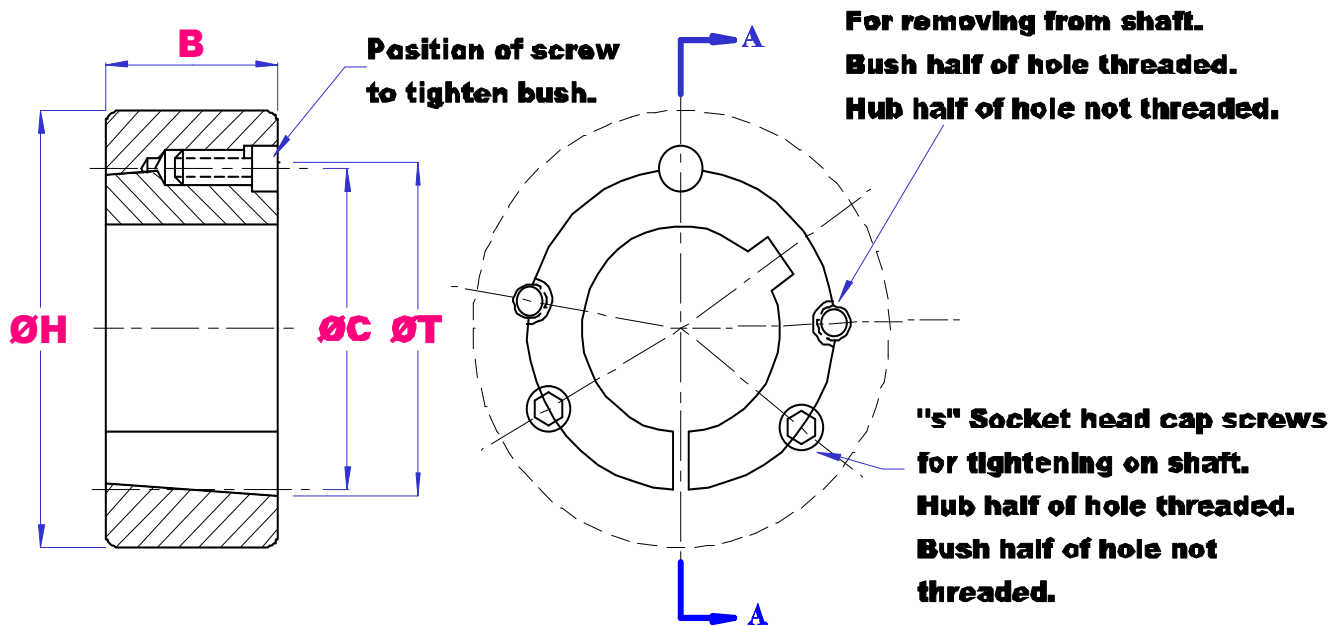
BUSH SIZE	T mm	B mm	H mm <small>(minimum hub diameter)</small>	C mm	SET SCREW (BSW)
1008	35.2	22.2	60.3	33.7	1/4 X 1/2
1108	38.4	22.2	63.5	36.9	1/4 X 1/2
1210	47.6	25.4	92.1	44.5	3/8 X 5/8
1215	47.6	38.1	79.4	44.5	3/8 X 5/8
1310	50.8	25.4	95.3	47.6	3/8 X 5/8
1610	57.2	25.4	101.6	54.0	3/8 X 5/8
1615	57.2	38.1	88.9	54.0	3/8 X 5/8
2012	69.9	31.8	120.7	66.7	7/16 X 7/8
2517	85.7	44.5	139.7	82.6	1/2 X 1
2525	85.7	63.5	120.7	82.6	3/8 X 1
3020	108.0	50.8	177.8	101.6	5/8 X 1.1/4
3030	108.0	76.2	158.8	101.6	7/8 X 1.1/4



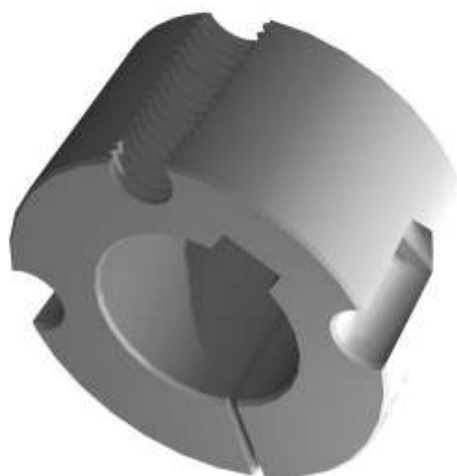


TAPERLOCK BUSH DIMENSIONS

3525 - 5050



BUSH SIZE	T mm	B mm	H mm <small>(minimum hub diameter)</small>	C mm	SET SCREW (BSW)
3525	127.0	63.5	197.0	123.0	1/2 X 1.1/2
3535	127.0	89.0	197.0	123.0	1/2 X 1.1/2
4030	146.0	76.2	241.0	141.0	5/8 X 1.3/8
4040	146.0	102.0	241.0	141.0	5/8 X 1.3/8
4535	161.0	89.0	267.0	156.0	3/4 X 2
4545	161.0	114.0	267.0	156.0	3/4 X 2
5040	178.0	101.6	292.0	171.0	7/8 X 2.1/4
5050	178.0	127.0	292.0	171.0	7/8 X 2.1/4





TAPER BUSH INSTALLATION INSTRUCTIONS

TO ASSEMBLE:

1. Clean and degrease the bore and surfaces of the bush and tapered bore of the hub. Insert the bush into the hub and line up the holes (half thread holes must line up with half unloading holes).
2. Lightly oil the grub screws and screw in but do not tighten yet.
3. Clean and degrease the shaft. Fit the hub with taper bush on the shaft and place in desired position.
4. When using a key, it should be first fitted in the shaft keyway. There should be a top clearance between the key and keyway bore.
5. Gradually tighten the screws in accordance with the torques in the table.
6. When the drive has been operating under load for a short period of time, check and ensure that the screws remained at the appropriate tightening torque.

TO REMOVE:

1. Loosen and remove all screws and place them in the holes of the bushing.
2. Tighten the screws alternatively till the hub's grip on the bush is loosened. The inner bore of the bushing can be slid on the shaft.
3. Remove the bush from the shaft.

TAPERLOCK BUSH	SCREW TIGHTENING TORQUES (Nm)	SCREW QUANTITY	SCREW SIZE
1008 1108	5.6	2	1/4 BSW
1210 1215	20	2	3/8 BSW
1310 1315	20	2	3/8 BSW
1610 1615	20	2	3/8 BSW
2012	31	2	7/16 BSW
2517	48	2	1/2 BSW
3020 3030	90	2	5/8 BSW
3535	112	3	1/2 BSW
4030 4040	170	3	5/8 BSW
4545	192	3	3/4 BSW
5050	271	3	7/8 BSW

-LOCK **TAPER BUSH STANDARD** **SHAFT SIZES**

BUSH	STANDARD BORE SIZES	
1008	MM INCH	11, 12, 14, 15, 16, 18, 19, 20, 22, 24, 25 3/8, 1/2, 5/8, 3/4, 7/8, 1
1108	MM INCH	11, 12, 14, 15, 16, 18, 19, 20, 22, 24, 25, 28 3/8, 1/2, 9/16, 5/8, 3/4, 7/8, 15/16, 1, 1.1/16, 1.1/8
1210	MM INCH	12, 14, 15, 16, 18, 19, 20, 22, 24, 25, 26, 28, 30, 32 1/2, 9/16, 5/8, 11/16, 3/4, 13/16, 7/8, 1, 1.1/16, 1.1/8, 1.3/16, 1.1/4
1215	MM INCH	12, 14, 15, 16, 18, 19, 20, 22, 24, 25, 26, 28, 30, 32 1/2, 9/16, 5/8, 11/16, 3/4, 13/16, 7/8, 1, 1.1/16, 1.1/8, 1.3/16, 1.1/4
1310	MM INCH	14, 15, 16, 18, 19, 20, 22, 24, 25, 28, 30, 32 1/2, 5/8, 3/4, 7/8, 1, 1.1/8, 1.1/4
1610	MM INCH	12, 14, 15, 16, 18, 19, 20, 22, 24, 25, 28, 30, 32, 35, 38, 40, 42 1/2, 9/16, 5/8, 3/4, 13/16, 7/8, 1, 1.1/16, 1.1/8, 1.1/4, 1.5/16, 1.3/8, 1.1/2, 1.5/8
1615	MM INCH INCH	12, 14, 15, 16, 18, 19, 20, 22, 24, 25, 28, 30, 32, 35, 38, 40, 42 1/2, 9/16, 5/8, 11/16, 3/4, 13/16, 7/8, 15/16, 1, 1.1/16, 1.1/8, 1.3/16, 1.1/4, 1.5/16, 1.3/8, 1.1/2, 1.5/8
2012	MM INCH	16, 18, 19, 20, 22, 24, 25, 28, 30, 32, 35, 38, 40, 42, 45, 48, 50 3/4, 7/8, 1, 1.1/8, 1.1/4, 1.3/8, 1.1/2, 1.5/8, 1.3/4, 1.7/8, 2
2017	MM INCH	16, 18, 19, 20, 22, 24, 25, 28, 30, 32, 35, 38, 40, 42, 45, 48, 50 3/4, 13/16, 7/8, 15/16, 1, 1.1/16, 1.1/8, 1.1/4, 1.5/16, 1.3/8, 1.1/2, 1.5/8, 1.3/4, 1.7/8, 2
2517	MM INCH	18, 19, 20, 22, 24, 25, 28, 30, 32, 35, 38, 40, 42, 45, 48, 50, 55, 60 3/4, 7/8, 1, 1.1/8, 1.1/4, 1.3/8, 1.1/2, 1.5/8, 1.3/4, 1.7/8, 2, 2.1/8, 2.1/4, 2.3/8, 2.1/2
3020	MM INCH INCH	25, 28, 30, 32, 35, 38, 40, 42, 45, 48, 50, 55, 60, 65, 70, 75 1, 1.1/8, 1.1/4, 1.3/8, 1.1/2, 1.3/4, 1.5/8, 1.7/8, 2, 2.1/8, 2.1/4, 2.3/8, 2.1/2, 2.5/8, 2.3/4, 2.7/8, 3
3030	MM INCH INCH	25, 28, 30, 32, 35, 38, 40, 42, 45, 48, 50, 55, 60, 65, 70, 75 1, 1.1/8, 1.1/4, 1.3/8, 1.1/2, 1.5/8, 1.3/4, 1.7/8, 2, 2.1/8, 2.1/4, 2.3/8, 2.1/2, 2.5/8, 2.3/4, 2.7/8, 3
3535	MM INCH INCH	35, 38, 40, 42, 45, 48, 50, 55, 60, 65, 70, 75, 80, 85, 90 1.3/8, 1.1/2, 1.5/8, 1.3/4, 1.7/8, 2, 2.1/8, 2.1/4, 2.3/8, 2.1/2, 2.5/8, 2.3/4, 2.7/8, 3, 3.1/8, 3.1/4, 3.3/8, 3.1/2,
4030	MM INCH	40, 42, 45, 48, 50, 55, 60, 65, 70, 75, 80, 85, 90, 95, 100 1.3/8, 1.1/2, 1.3/4, 1.7/8, 2, 2.1/8, 2.1/4, 2.1/2, 2.5/8, 2.3/4, 2.7/8, 3, 3.1/4, 3.1/2, 3.3/4, 4
4040	MM INCH	40, 42, 45, 48, 50, 55, 60, 65, 70, 75, 80, 85, 90, 95, 100 1.3/8, 1.1/2, 1.3/4, 1.7/8, 2, 2.1/8, 2.1/4, 2.1/2, 2.5/8, 2.3/4, 2.7/8, 3, 3.1/4, 3.1/2, 3.3/4, 4
4545	MM INCH	60, 65, 70, 75, 80, 85, 90, 95, 100, 105, 110 2.1/4, 2.3/8, 2.1/2, 2.3/4, 2.7/8, 3, 3.1/8, 3.1/4, 3.3/8, 3.1/2, 3.3/4, 4, 4.1/4, 4.1/2
5050	MM INCH	70, 75, 80, 85, 90, 95, 100, 110, 115, 120, 125 2.3/4, 2.7/8, 3, 3.1/4, 3.1/2, 3.3/4, 4, 4.1/4, 4.1/2, 4.3/4, 5

PART NUMBER EXAMPLE

