

AGC TWIN
LIST OF DRAWINGS

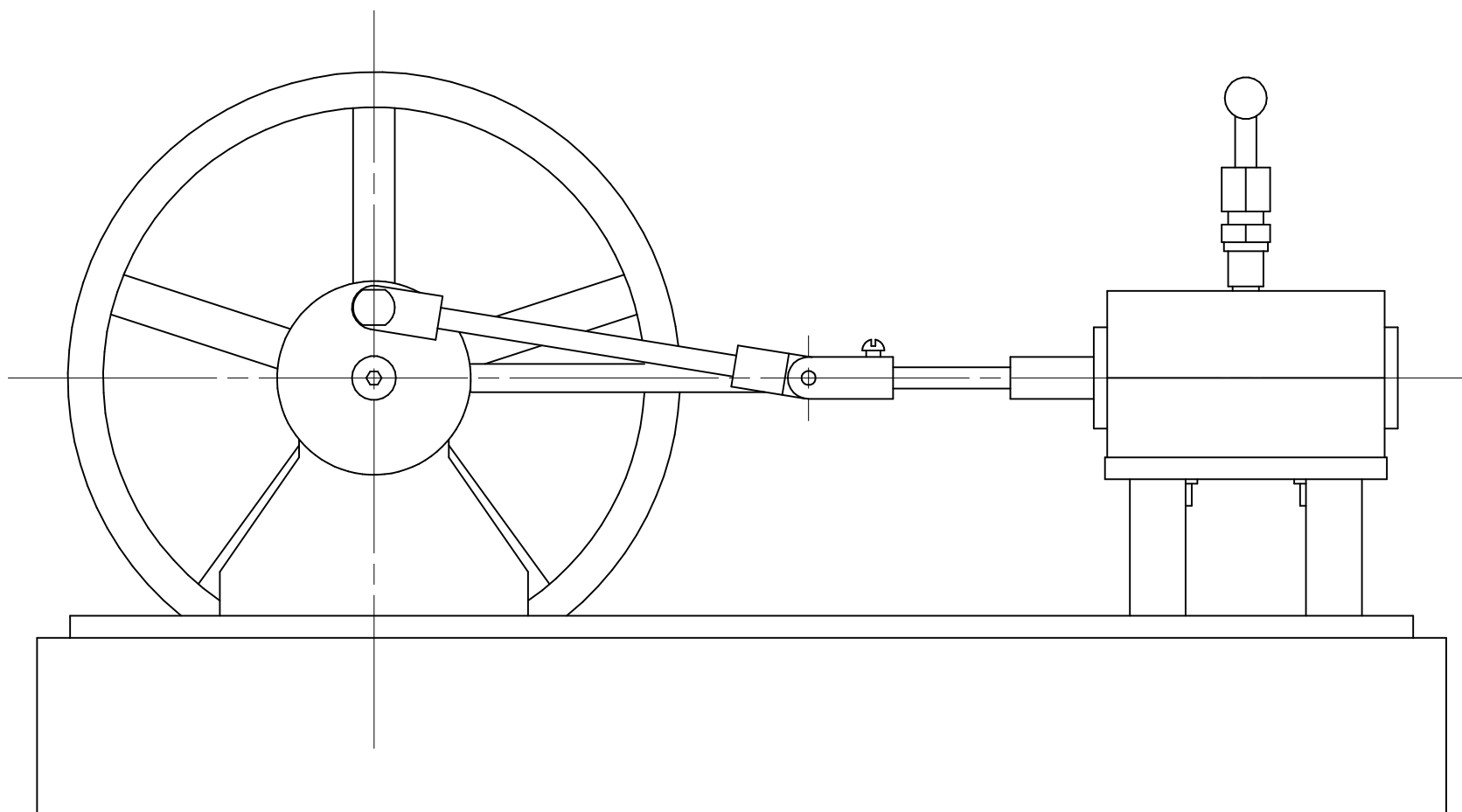
SHEET TITLE

- 1 GA SIDE ELEVATION
- 2 GA PLAN
- 3 PLINTH
- 4A BASE – CUTTING GUIDE
- 4B BASE – MOUNTING HOLES
- 5 MEZANINE FLOOR – SUPPORTS
- 6 MEZANINE FLOOR
- 7A BEARING STANDS – CUTTING GUIDE
- 7B BEARING STAND
- 8 FLYWHEEL SHAFT
- 9 CRANK & CONNECTING SCREW
- 10 VALVE ECCENTRIC
- 11A FLYWHEEL
- 11B FLYWHEEL RIM
- 11C FLYWHEEL STRUTS
- 11D FLYWHEEL HUB
- 12 PISTON CON ROD
- 13A VALVE ROD – BIG END
- 13B VALVE ROD
- 14 CYLINDER BLOCK
- 15 CYLINDER BLOCK – DETAILS OF AIR/STEAM INLET
- 16 CYLINDER CAPS
- 17 VALVE PISTON
- 18 PISTON
- 19 CLEVIS – PISTON & VALVE
- 20 AIR/STEAM INLET PIPES
- 21 AIR/STEAM MANIFOLD

AGC TWIN

SHEET

Drawn by: Alan Charleston

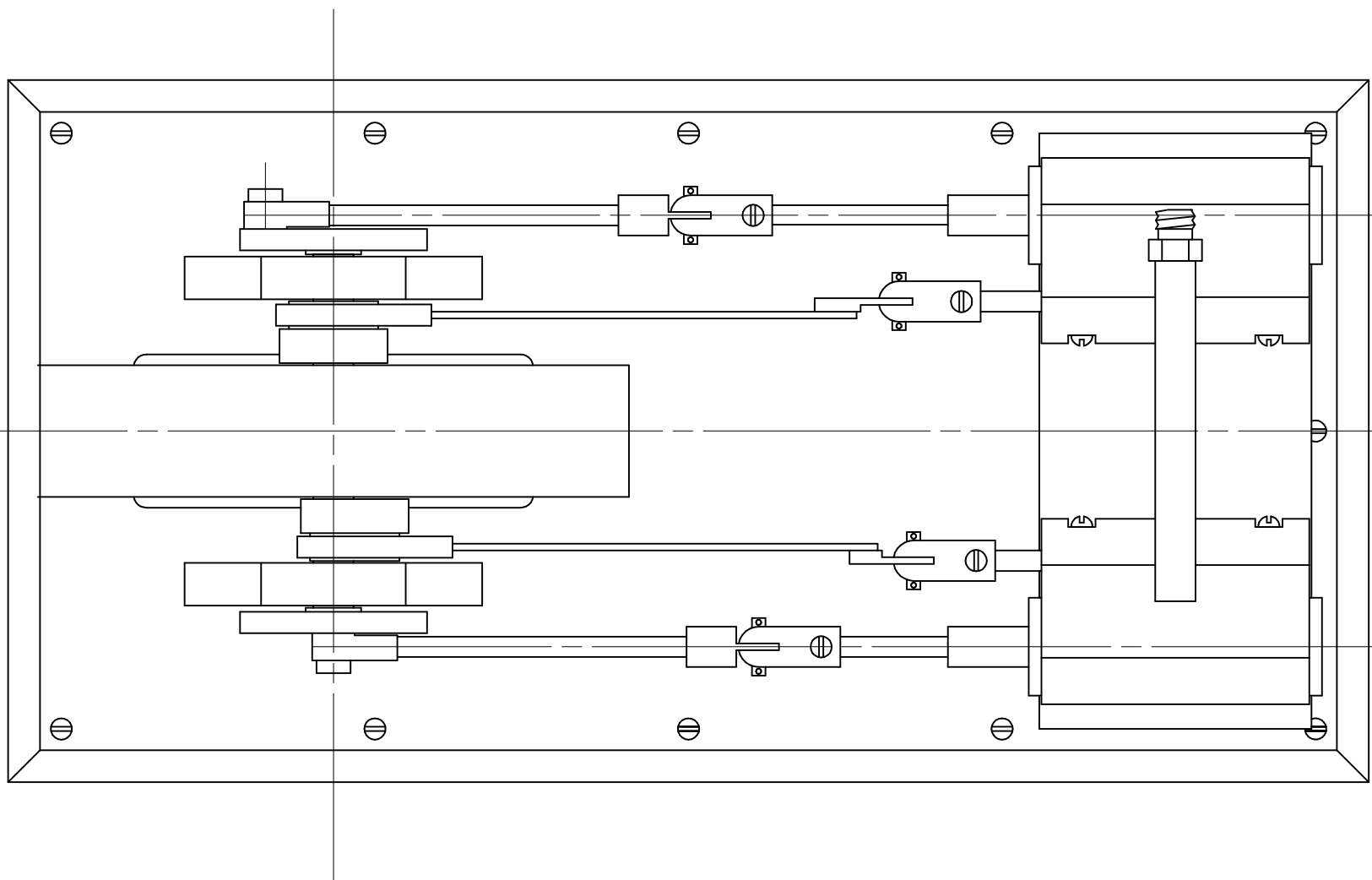


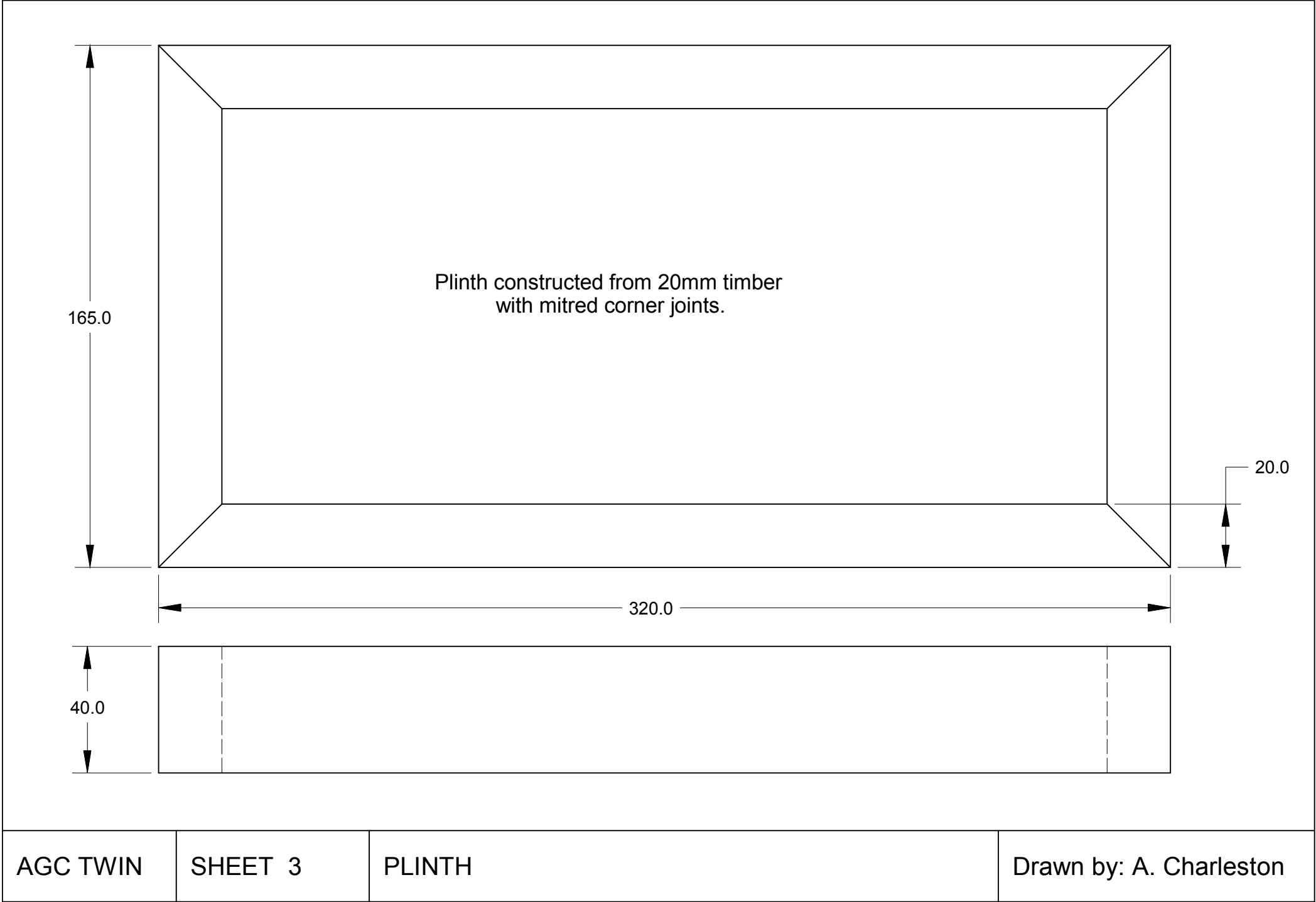
AGC TWIN

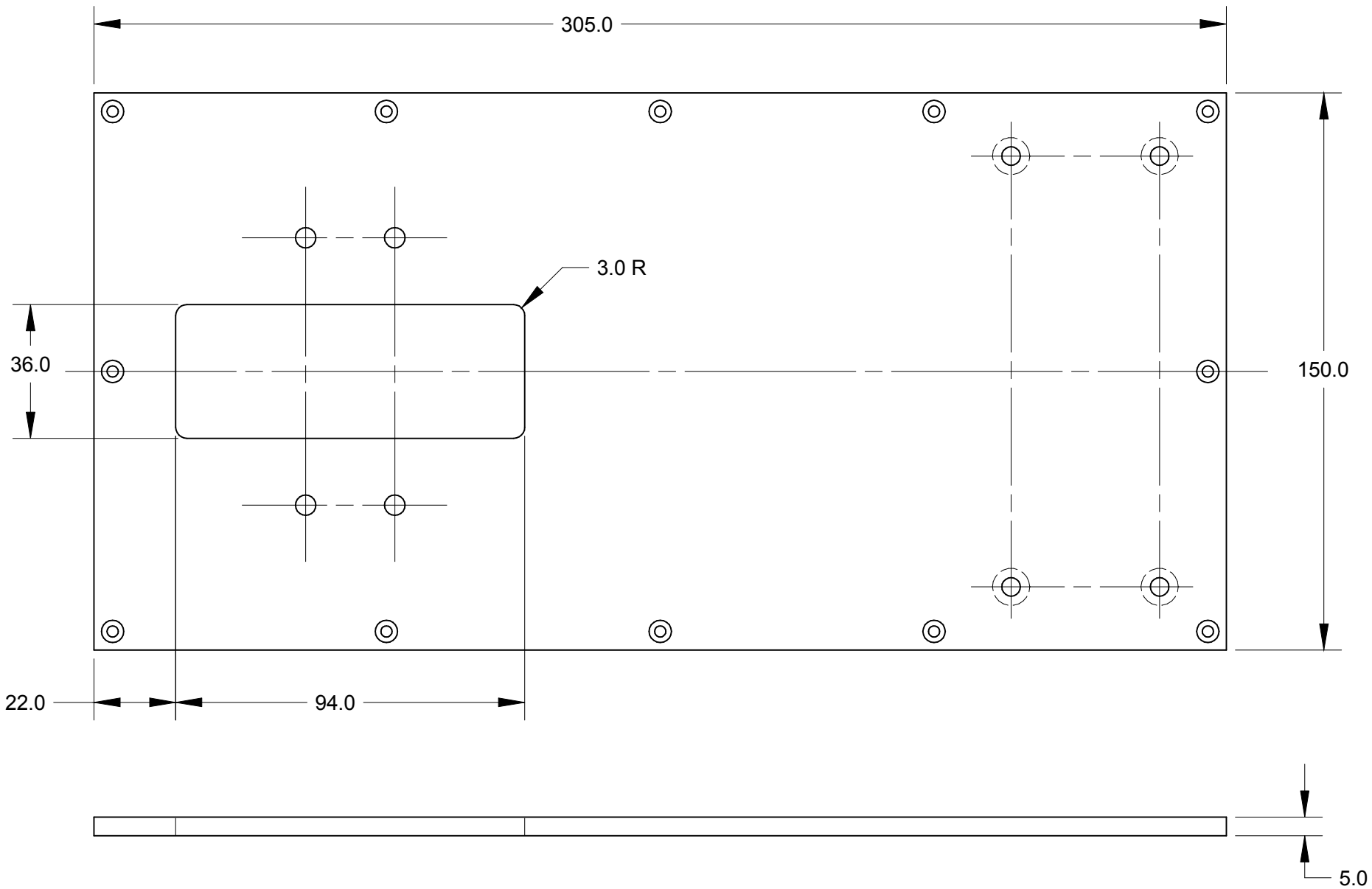
SHEET 1

GA SIDE ELEVATION

Drawn by: Alan Charleston





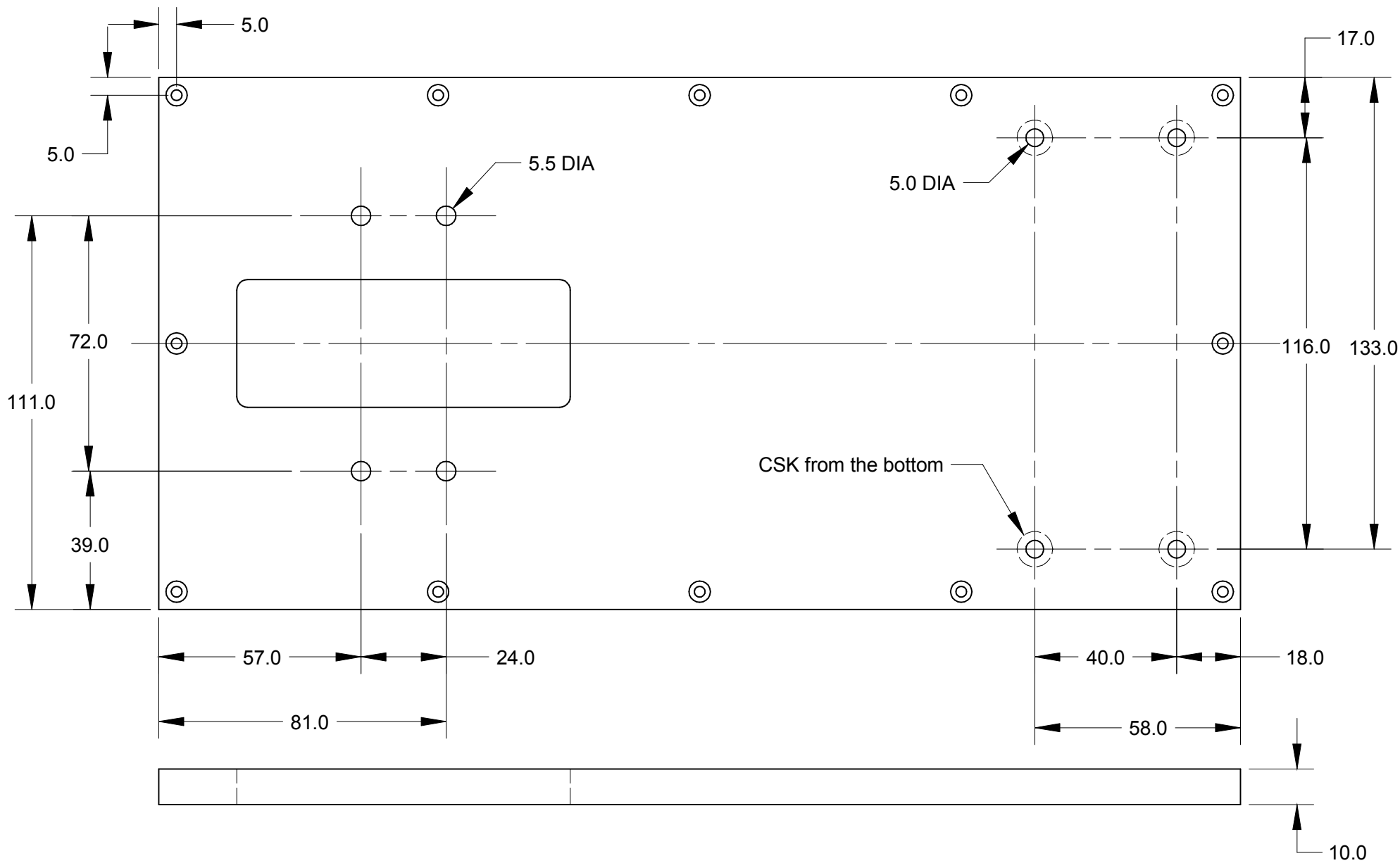


AGC TWIN

SHEET 4A

BASE - CUTTING GUIDE

Drawn by: A. Charleston

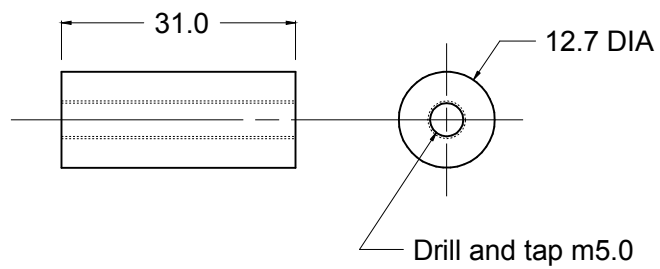


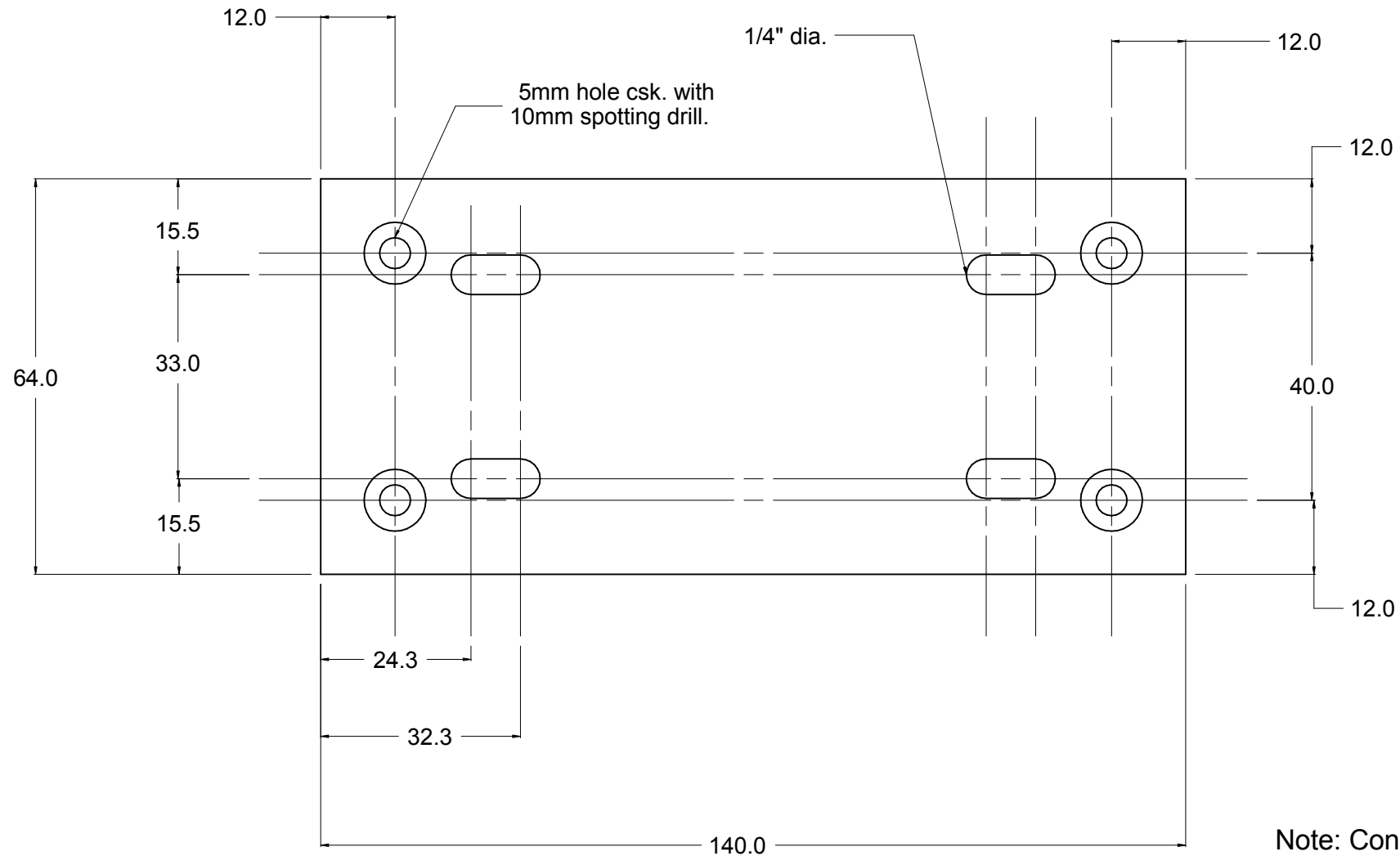
AGC TWIN

SHEET 4B

BASE - MOUNTING HOLES

Drawn by: A. Charleston





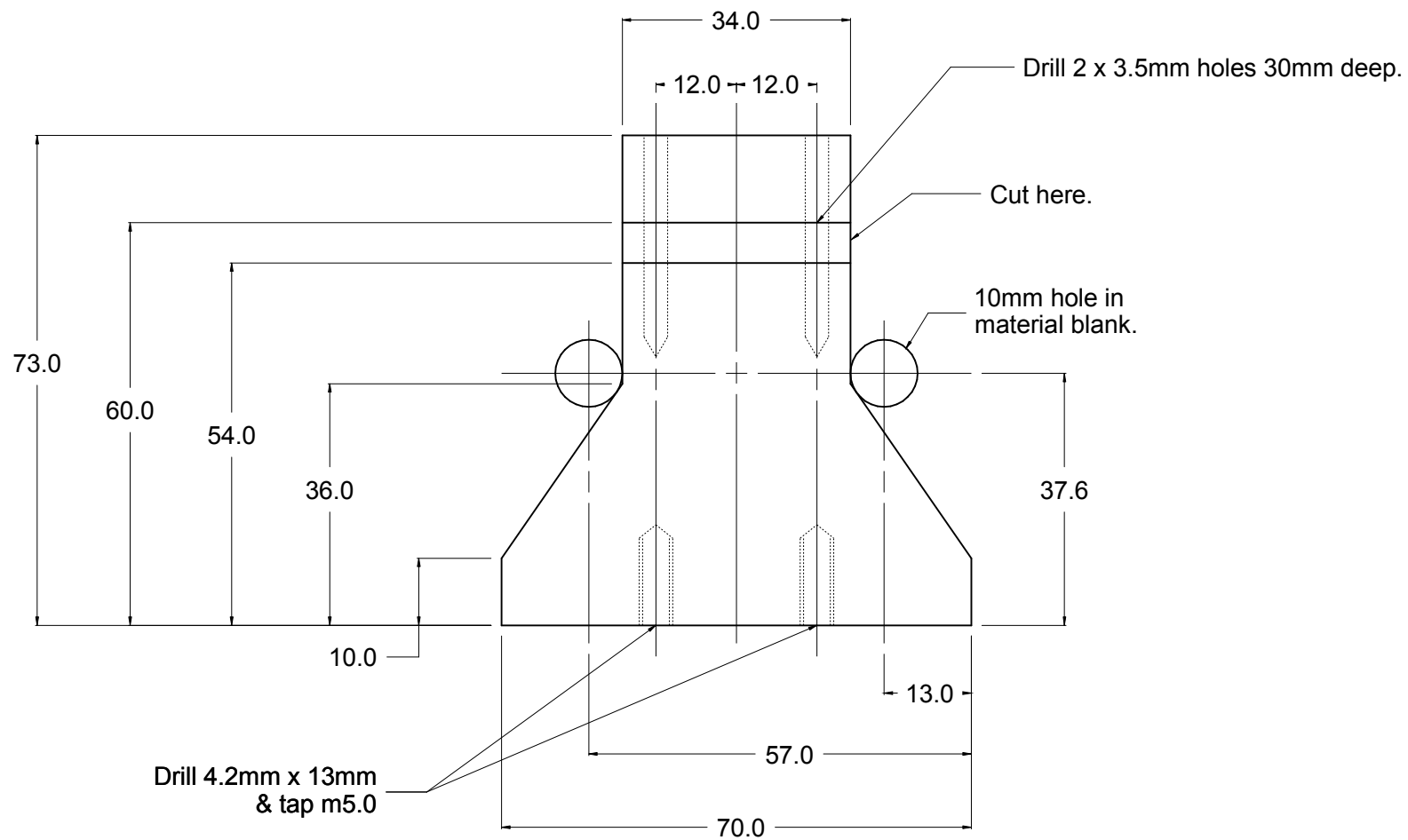
Note: Construct from
5mm aluminium.

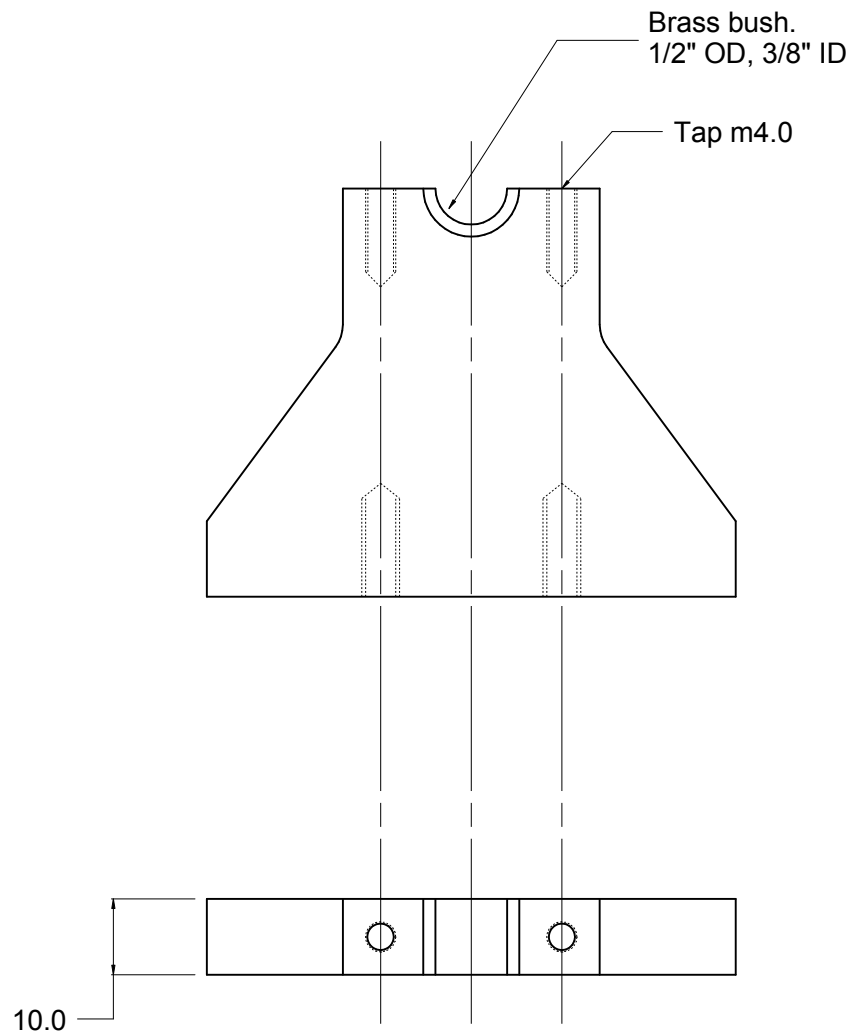
AGC TWIN

SHEET 6

MEZANINE FLOOR

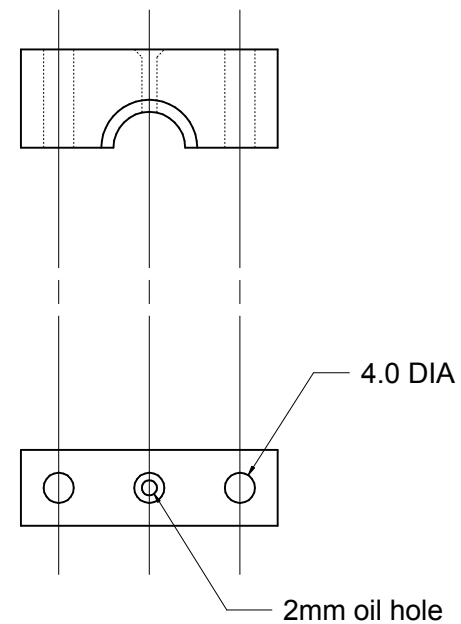
Drawn by: Alan Charleston



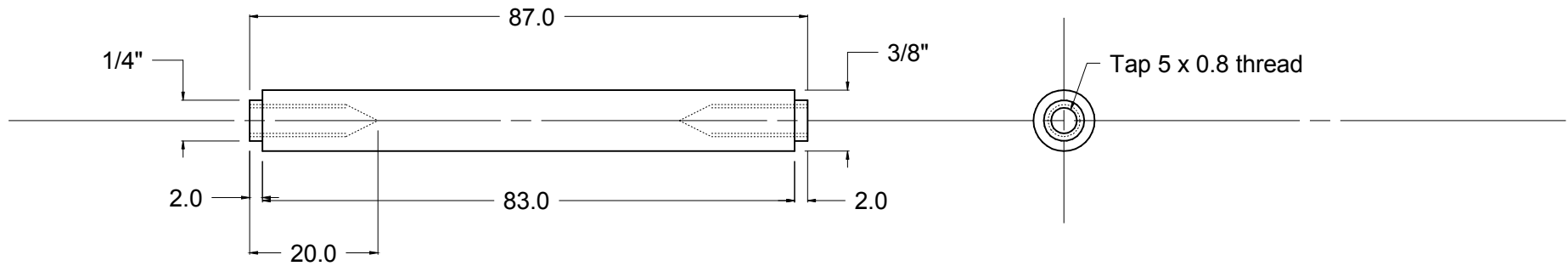


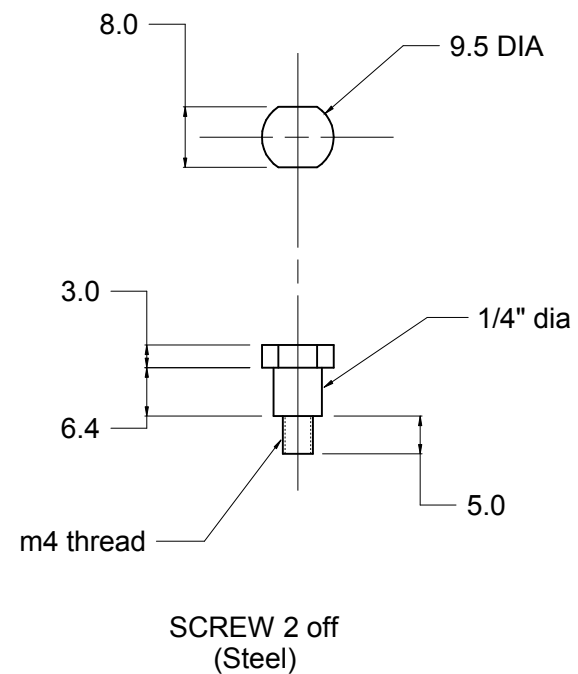
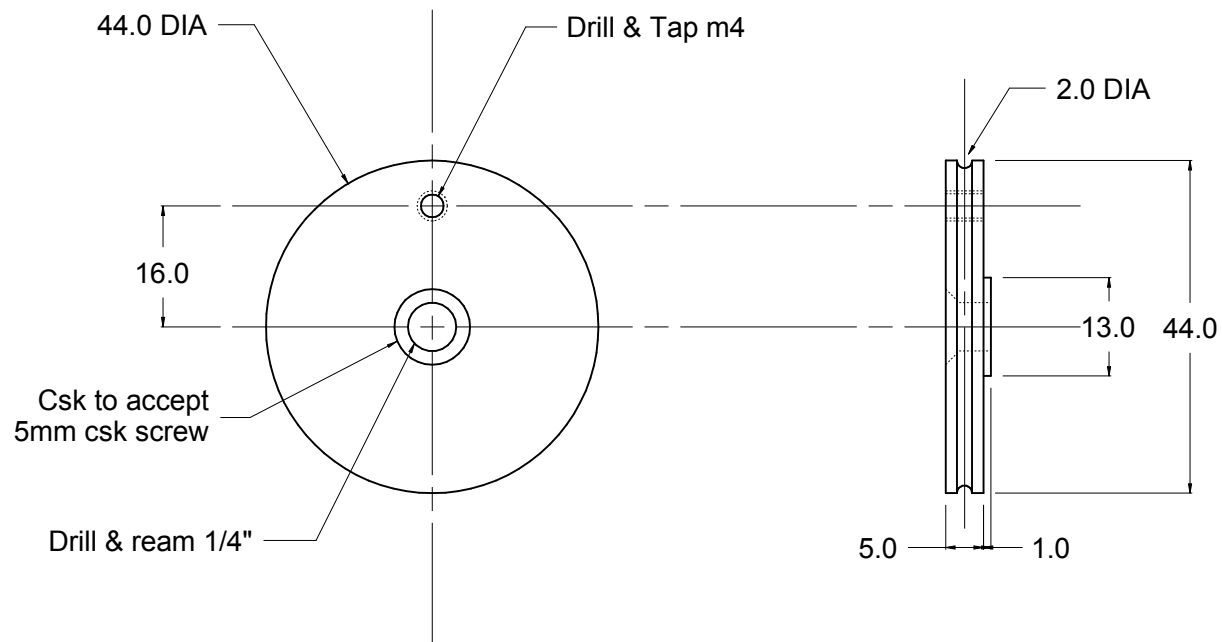
BEARING STAND

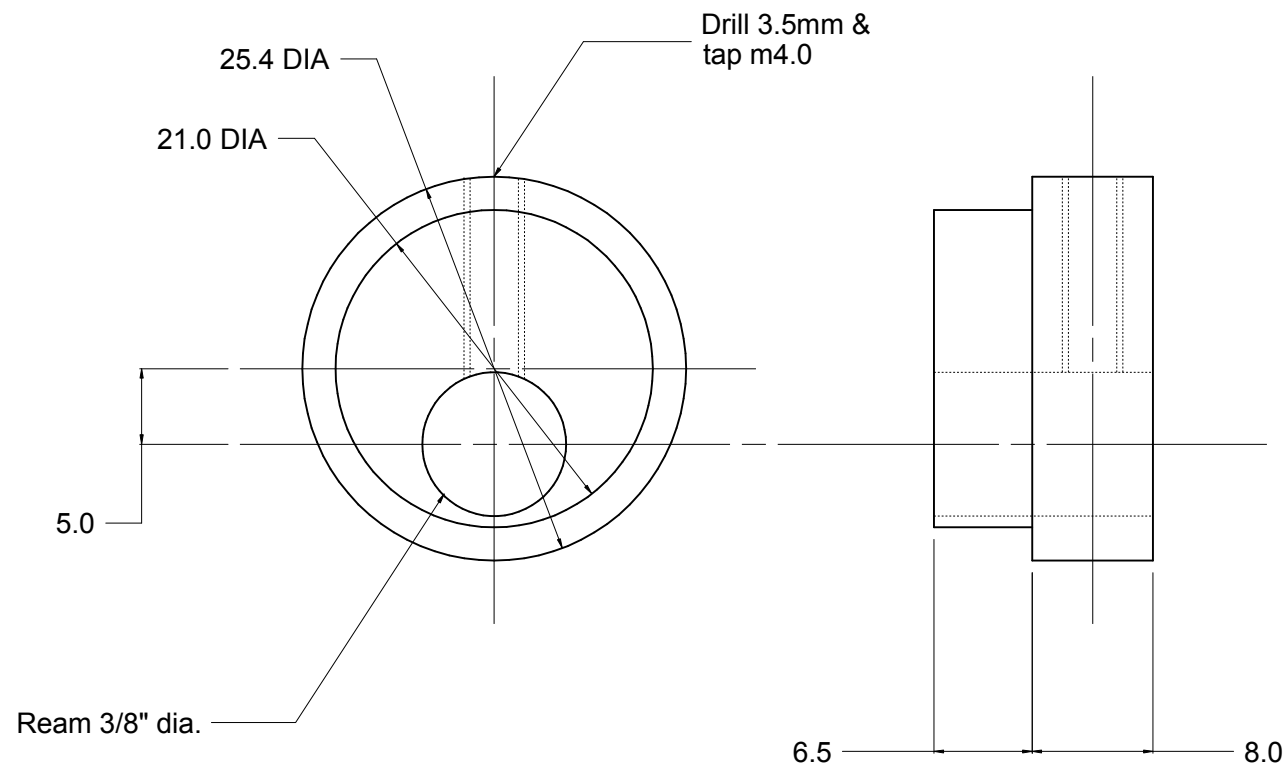
Note: This drawing should be used
in conjunction with the
Bearing Stand & Cap Cutting Guide

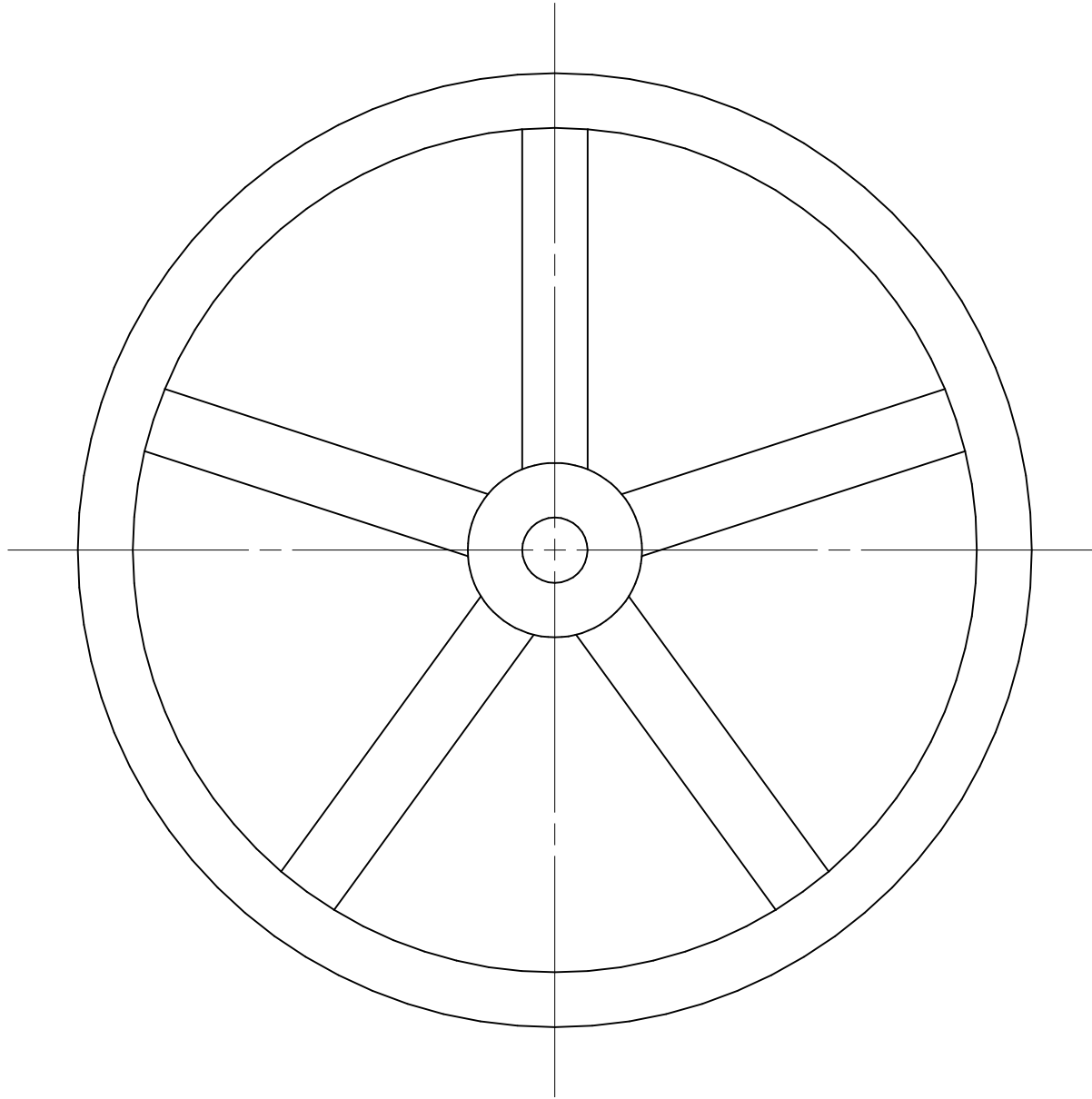


CAP







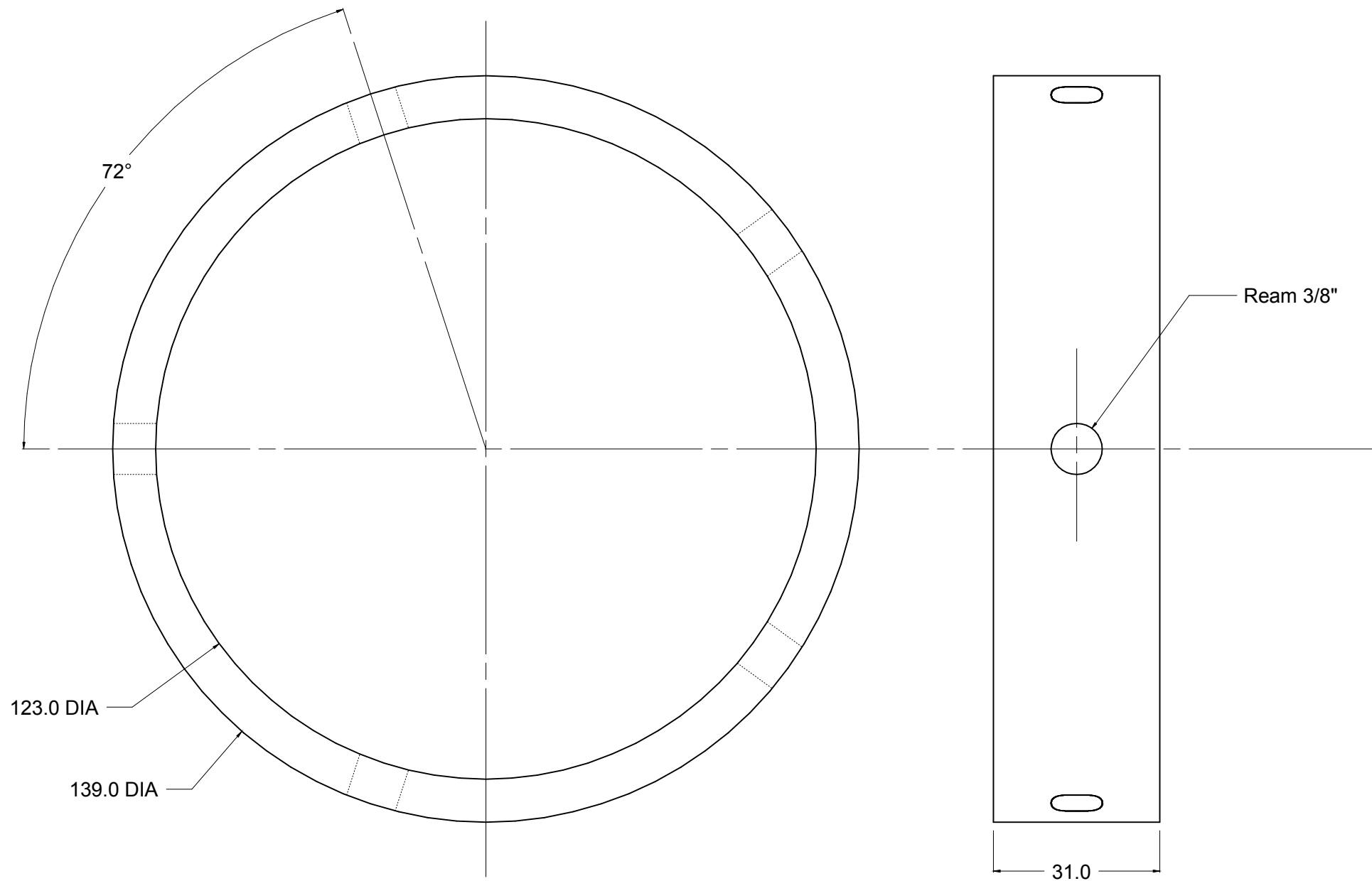


AGC TWIN

SHEET 11A

FLYWHEEL

Drawn by: Alan Charleston

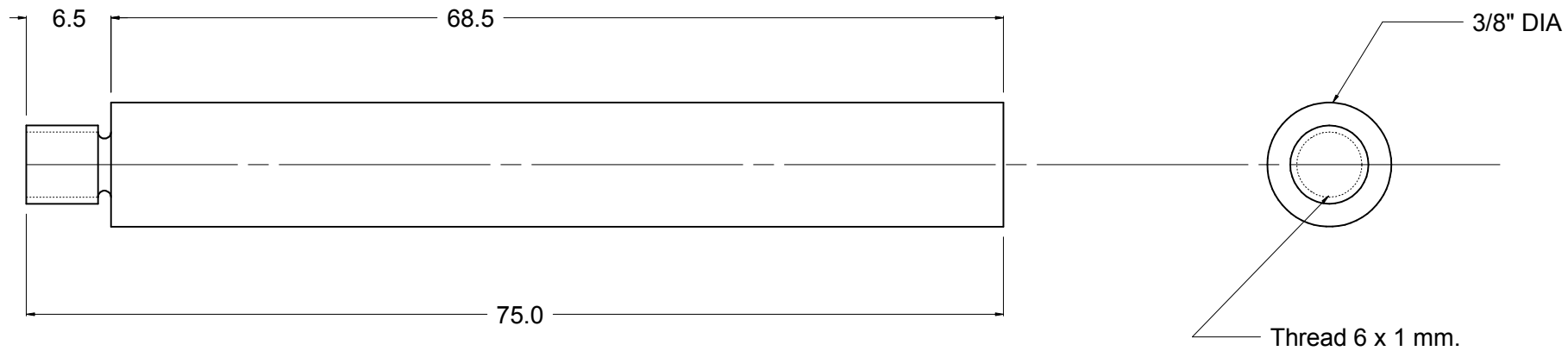


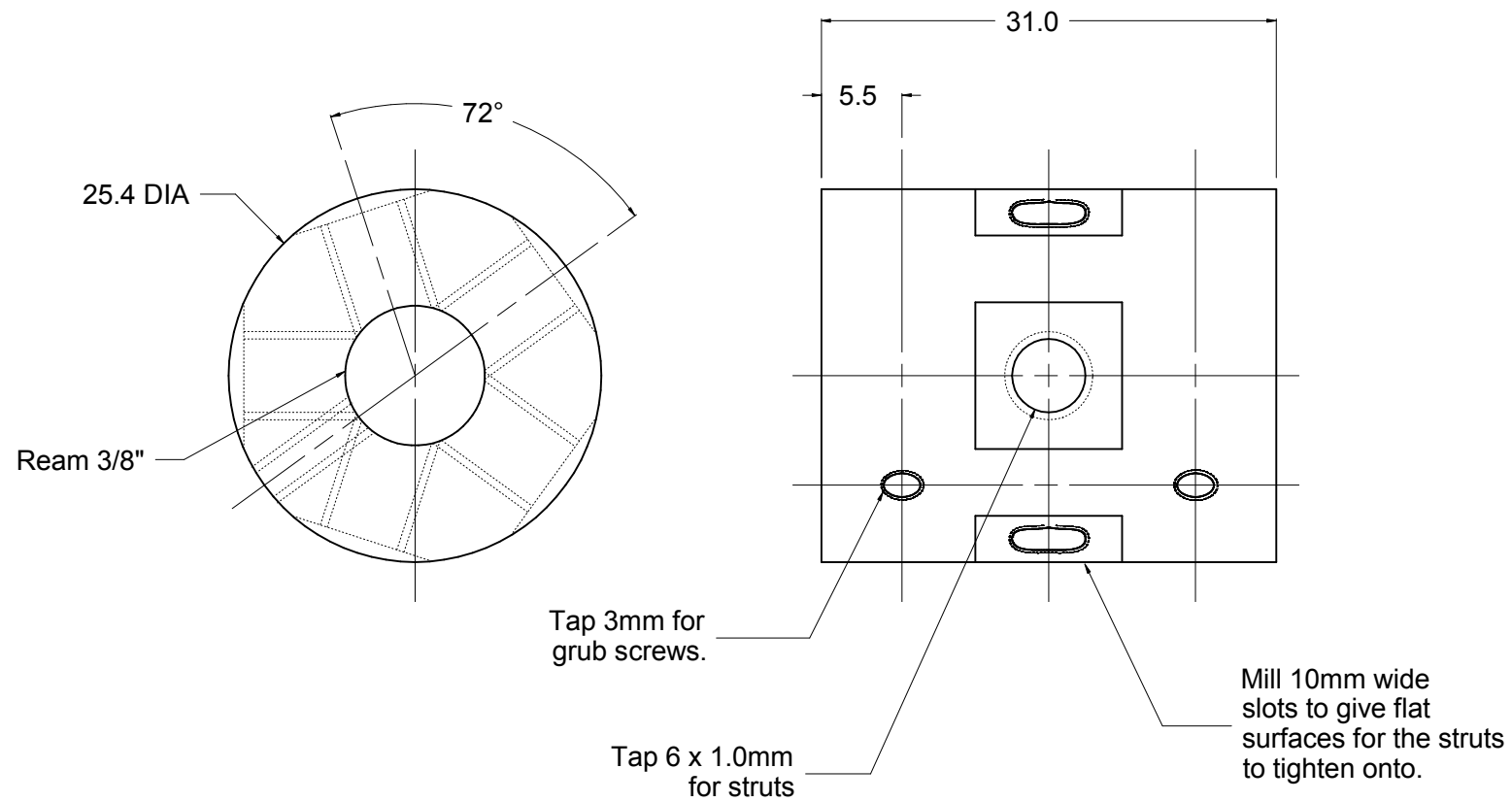
AGC TWIN

SHEET 11B

FLYWHEEL RIM

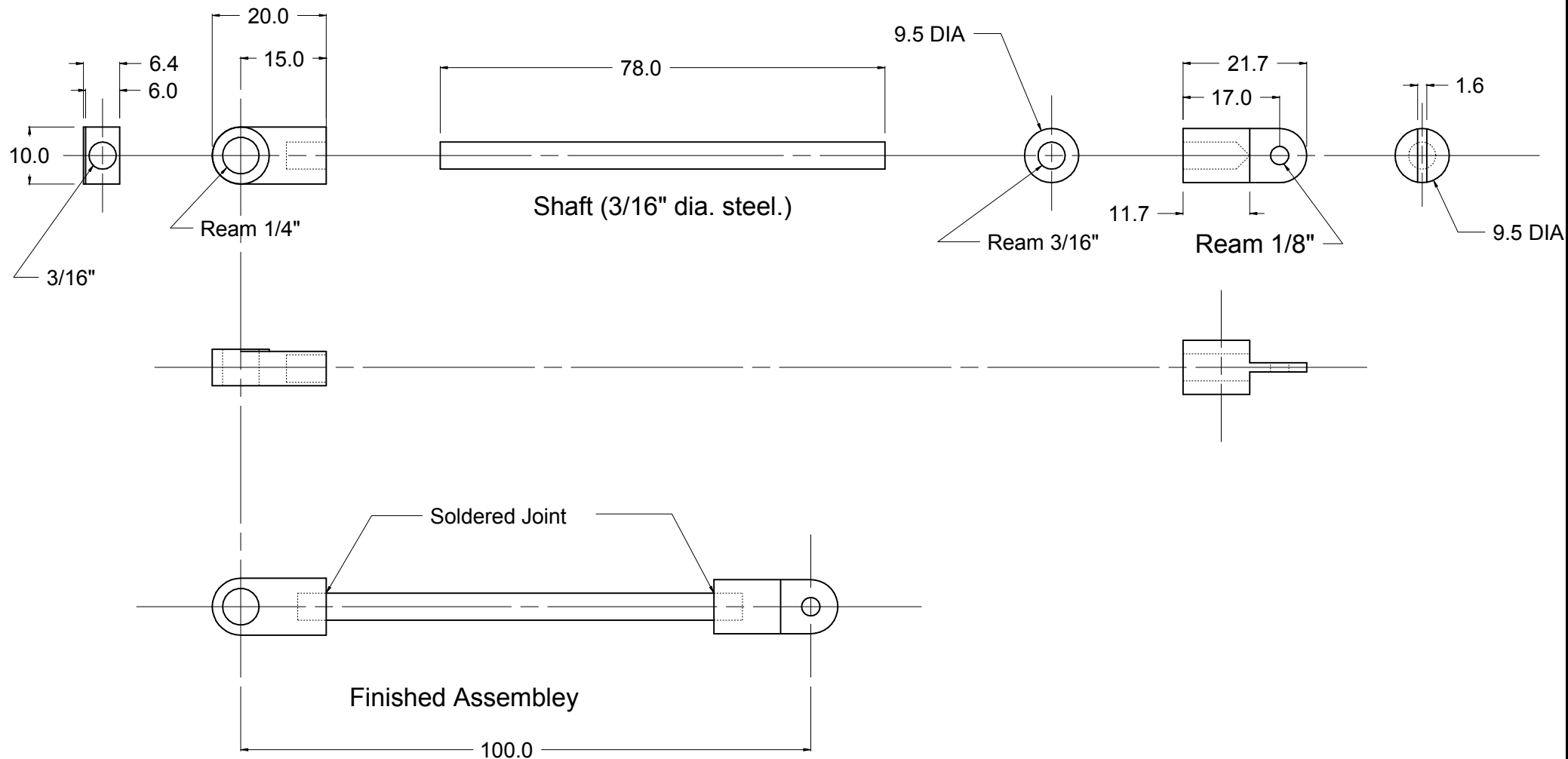
Drawn by: Alan Charleston

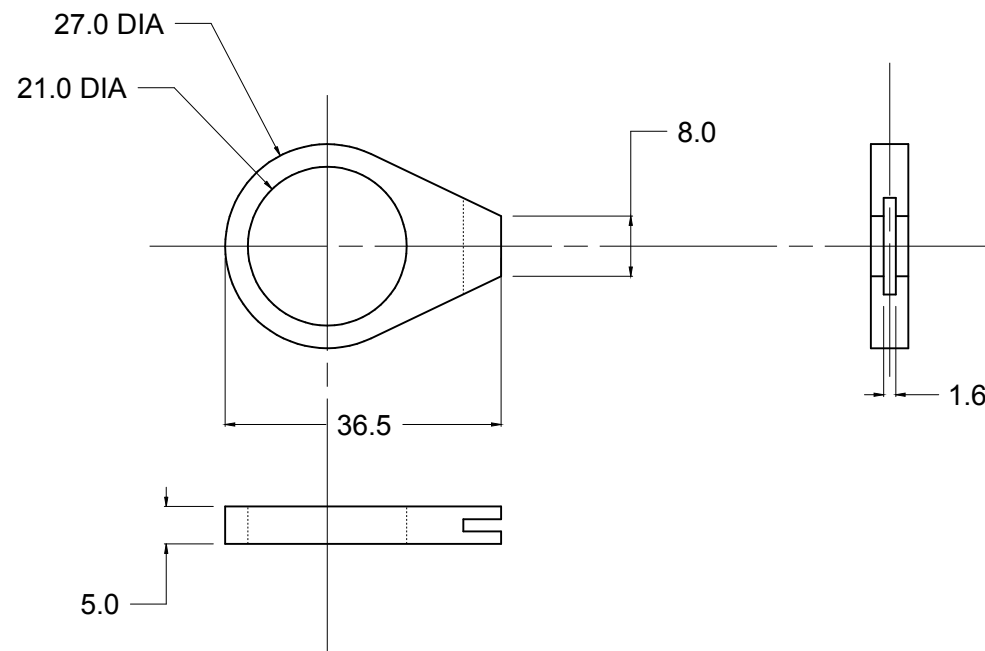




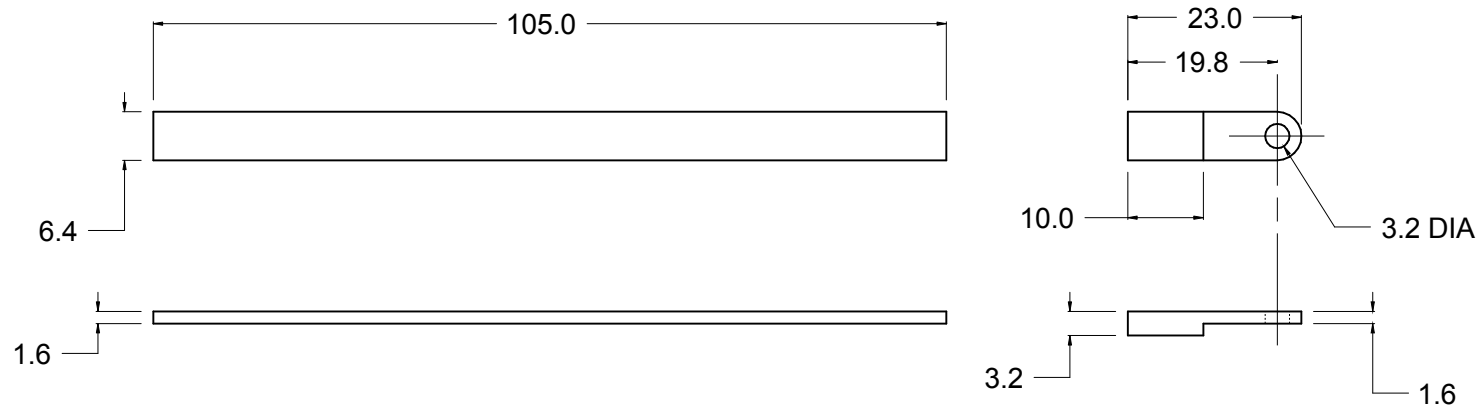
Crank End Clevis

Piston End Clevis

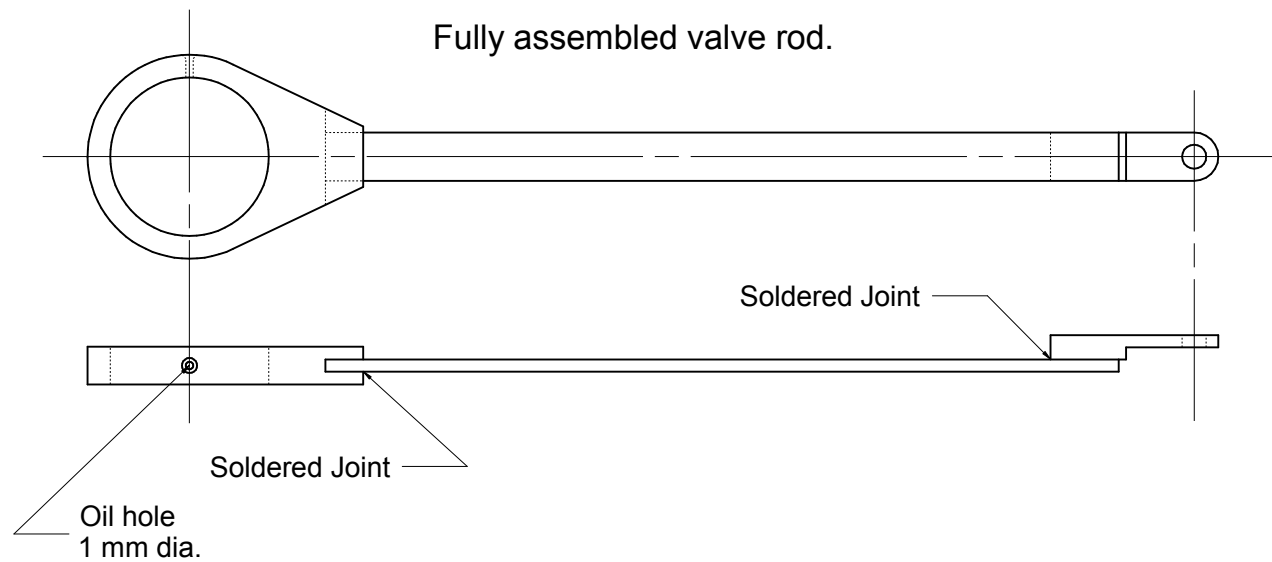




Valve rod components made from 1/16" (1.6mm) Brass.



Fully assembled valve rod.

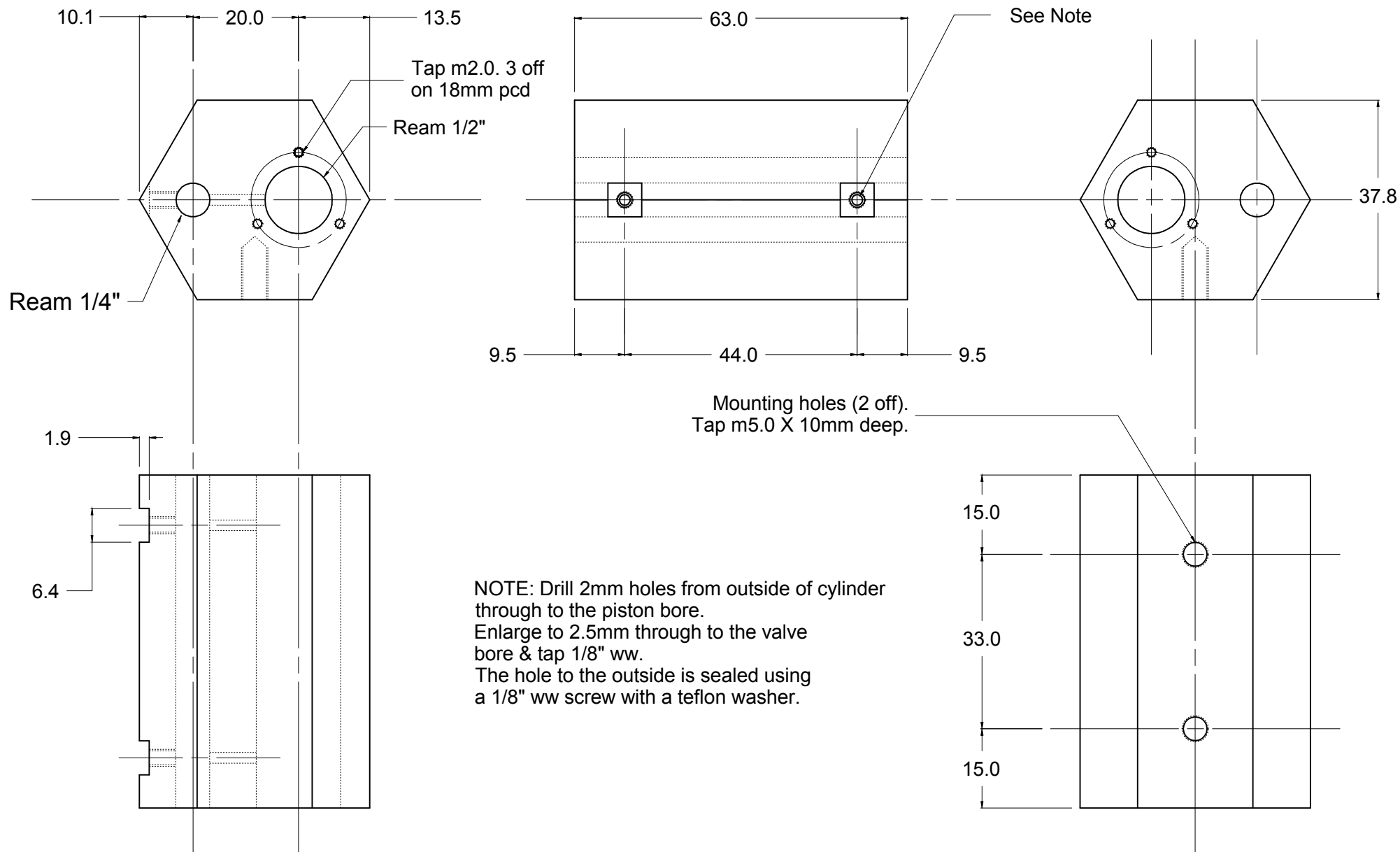


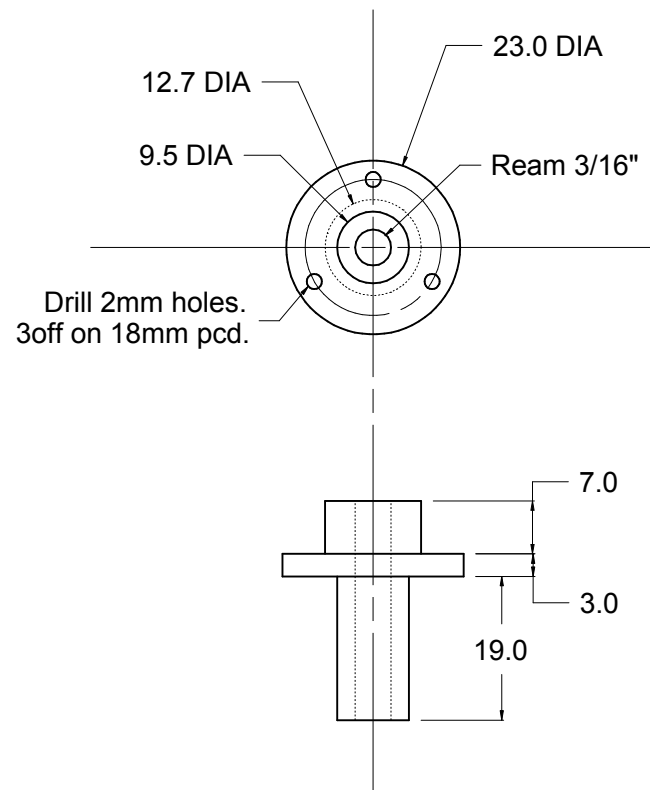
AGC TWIN

SHEET 13B

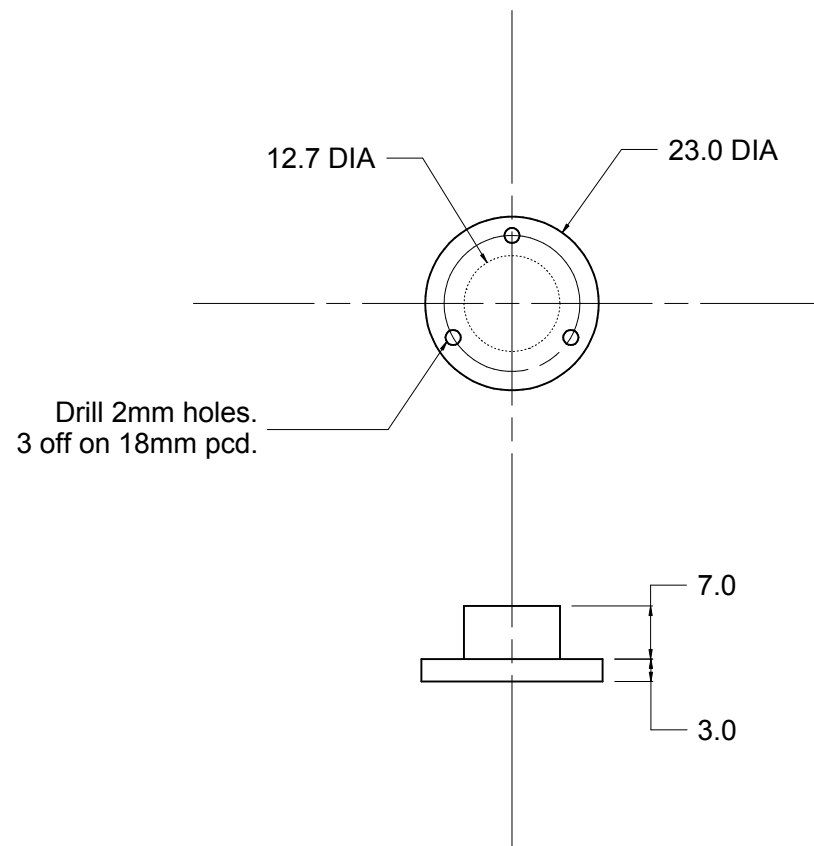
VALVE ROD

Drawn by: Alan Charleston

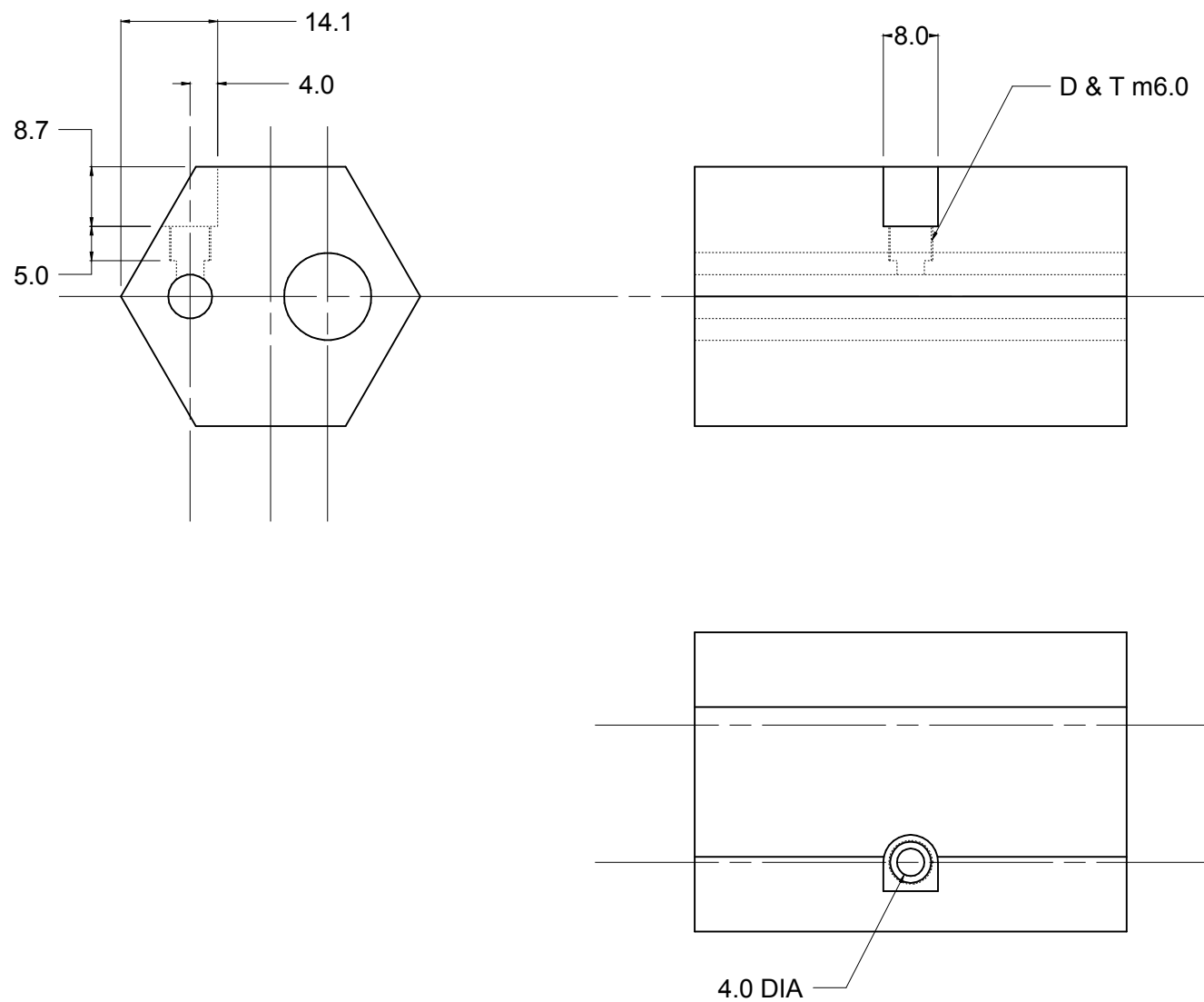


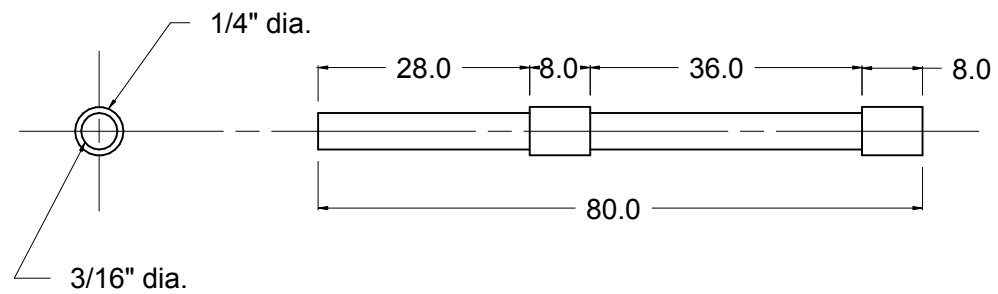


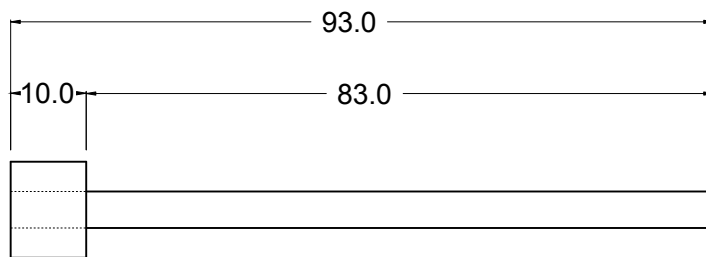
FRONT CAP



REAR CAP







Note: Silver solder phosphor bronze
piston head to shaft.

