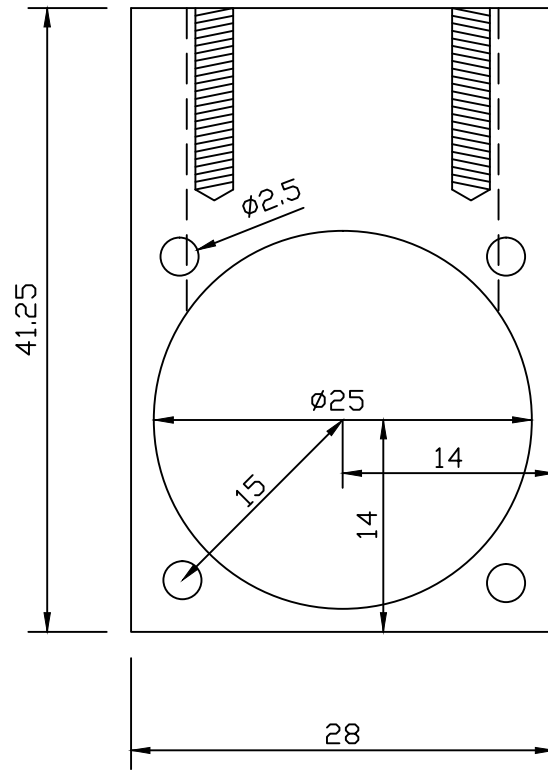
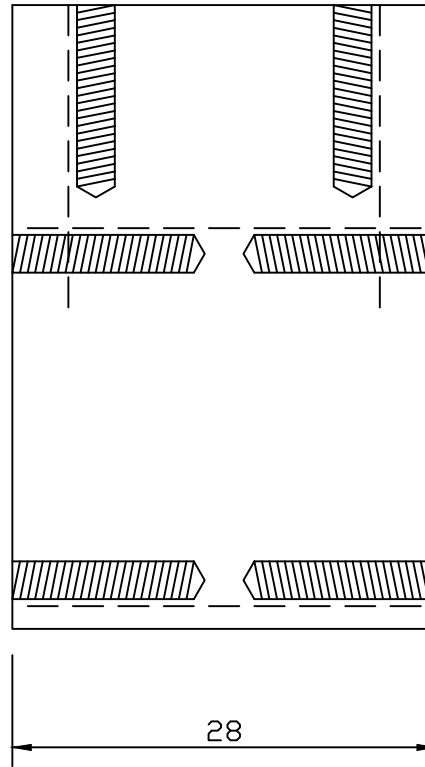


Crankcase from alloy

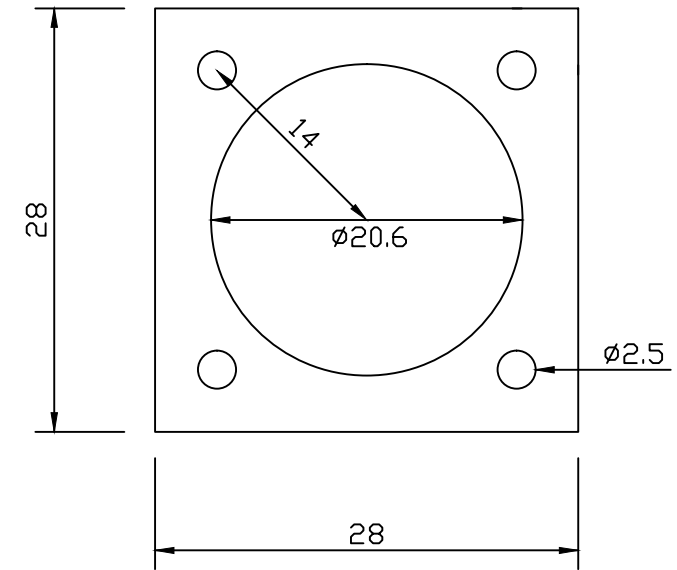


Front & rear
view



Side view

All holes 2.5mm drilled 12mm deep and
taped M3 x 0.5 with bottom tap



Top view

All drawings 2 x actual size

Materials as stated

Sheet 2 of 9

Holly Buddy 2.5cc diesel engine

Designed by Ed Holly

CAD by Steve Jenkinson