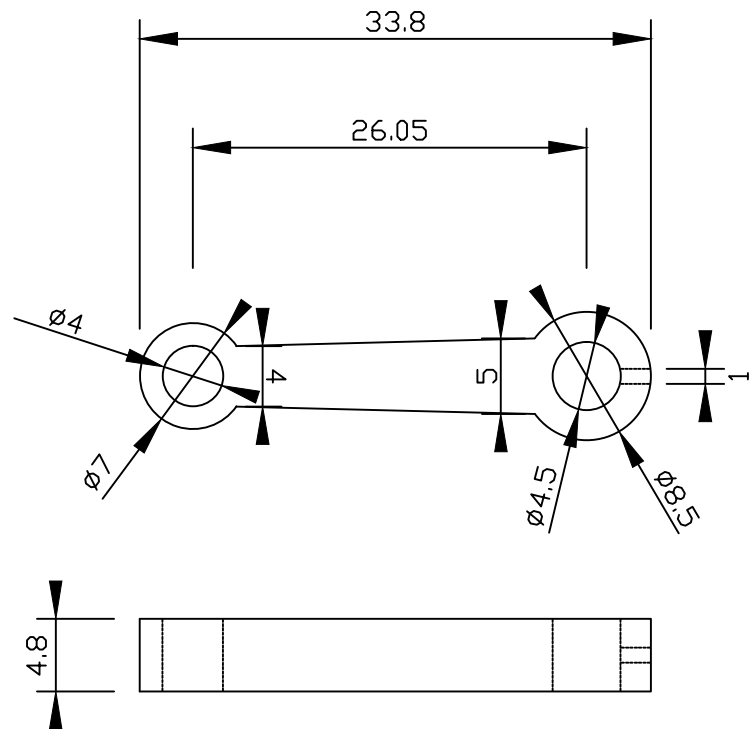
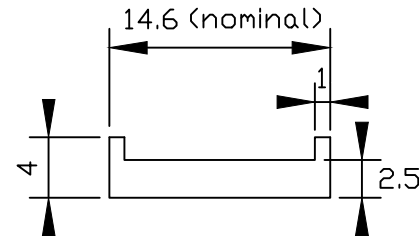


Conrod

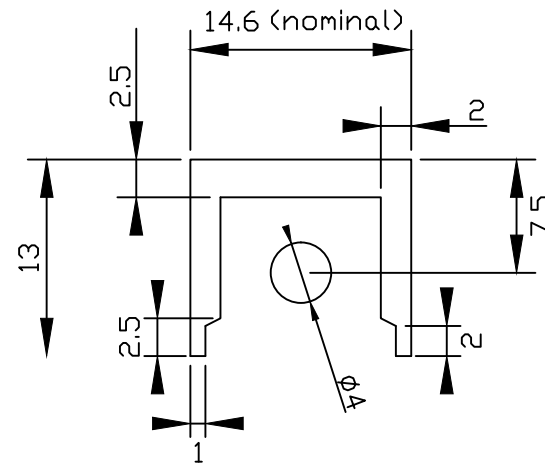


Machine from 6061 or
5031 alloy or similar

Contrapiston

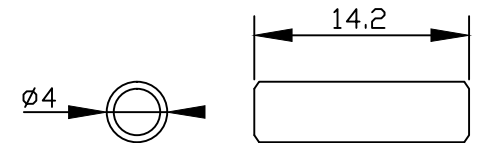


Piston



Piston and contrapiston
from cast iron

Gudgeon pin



Use 4mm drill rod
or 4mm ground rod

Gudgeon must be light
press fit into piston.
Drill 3.8 then 3.9 hole
then ream but not all
the way with 4mm reamer
to achieve this.

All drawings 2 x actual size

Materials as stated

Sheet 5 of 9

Holly Buddy 2.5cc diesel engine

Designed by Ed Holly

CAD by Steve Jenkinson