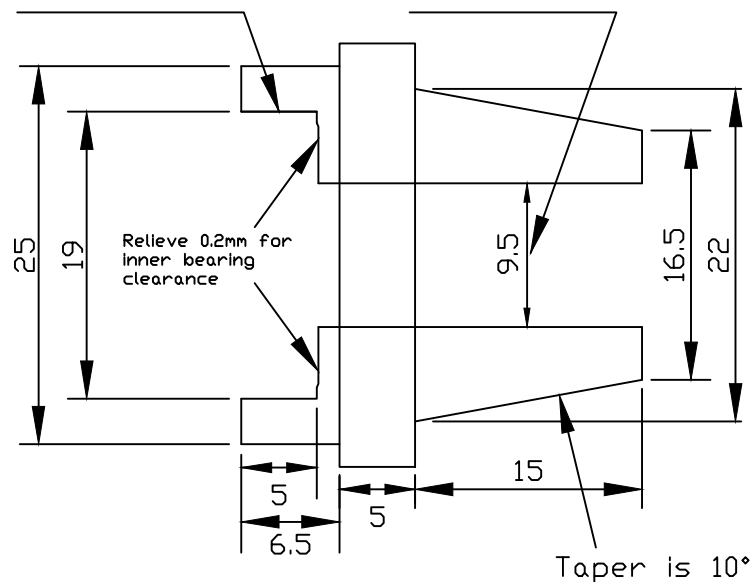


Nose From alloy

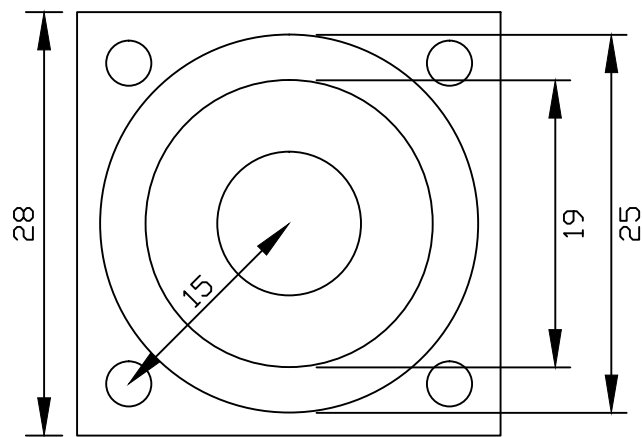
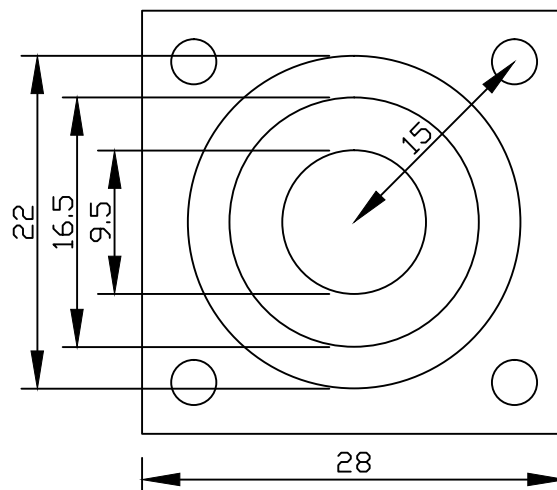
Machine to nominal 19mm ID x 5mm deep. Finish to be a snug fit on bearing.

Bore hole to 9.5mm nominal and finish to be a smooth fit on crankshaft

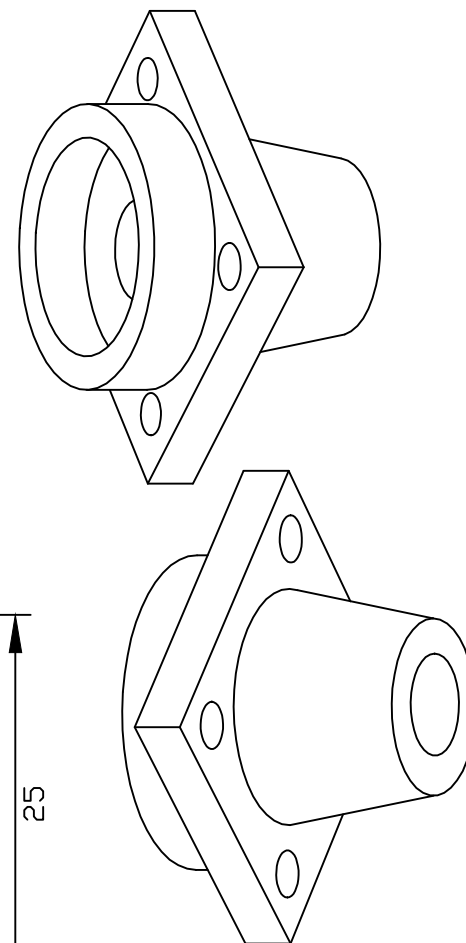


Side view

Front view



Rear view



Isometric projection

All drawings 2 x actual size

Materials as stated

Sheet 6 of 9

Holly Buddy 2.5cc diesel engine

Designed by Ed Holly

CAD by Steve Jenkinson