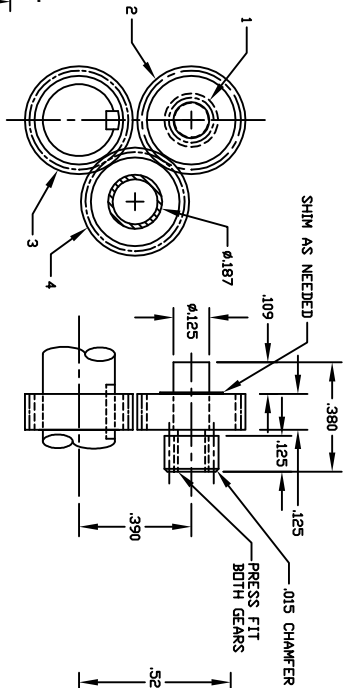


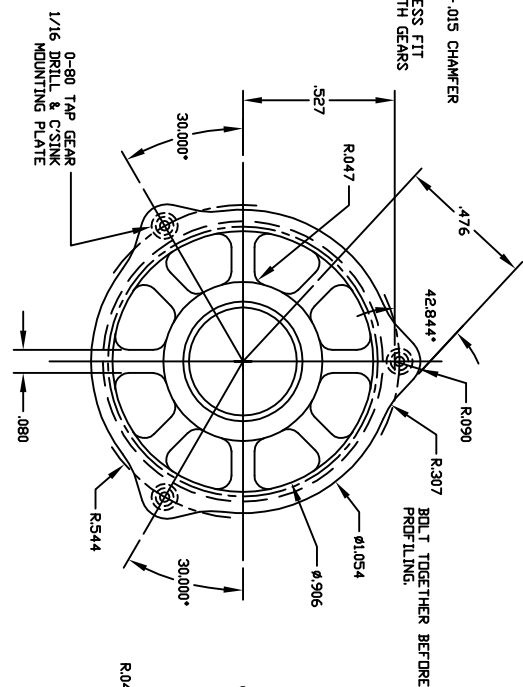
LIFTER
DRILL, ROD-HARDEN
10 REQ'D.

NOTE:
USE FLAT BOTTOM SET SCREW
TO LOCATE LIFTER IN BORE.
LOCITE IN PLACE.



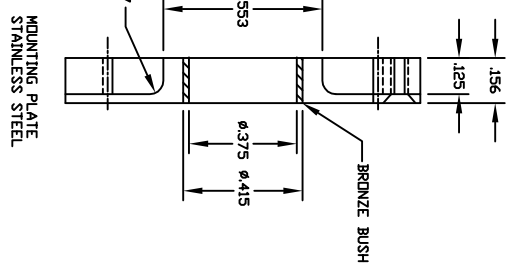
GEAR ARRANGEMENT

- #1 64 DP, 10 TEETH, .156 PD.
- #2 64 DP, 22 TEETH, .344 PD.
- #3 64 DP, 22 TEETH, .344 PD.
- #4 64 DP, 22 TEETH, .344 PD, .122 WIDE

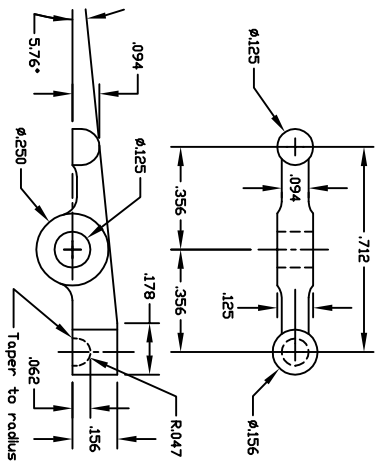
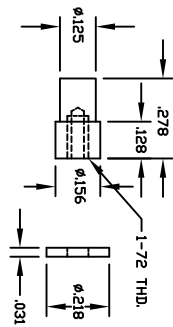


CAM RING

MAKE CAM FROM STOCK DRIVE PRODUCTS GEAR
SIE62Z-064S060
I.D. gear 64 DP 60 teeth .9375 PD, .125 wide
STAINLESS STEEL

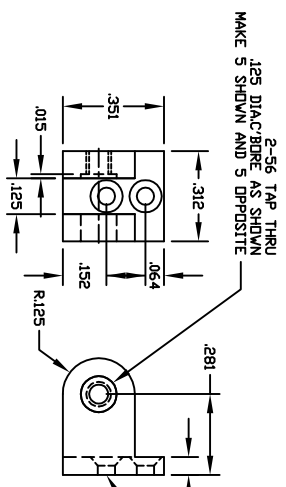


#4 GEAR SHAFT



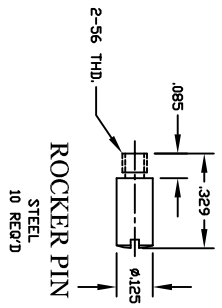
ROCKER ARM

STEEL
10 REQ'D



ROCKER POST

ALUMINUM



ROCKER PIN

STEEL
10 REQ'D

DRAWN BY: GEORGE D. BRITNELL	SHT. 4
SCALE: 1.5 X SIZE	CHANGE F
DATE: FEB. 24, 2012	

5 CYL. RADIAL