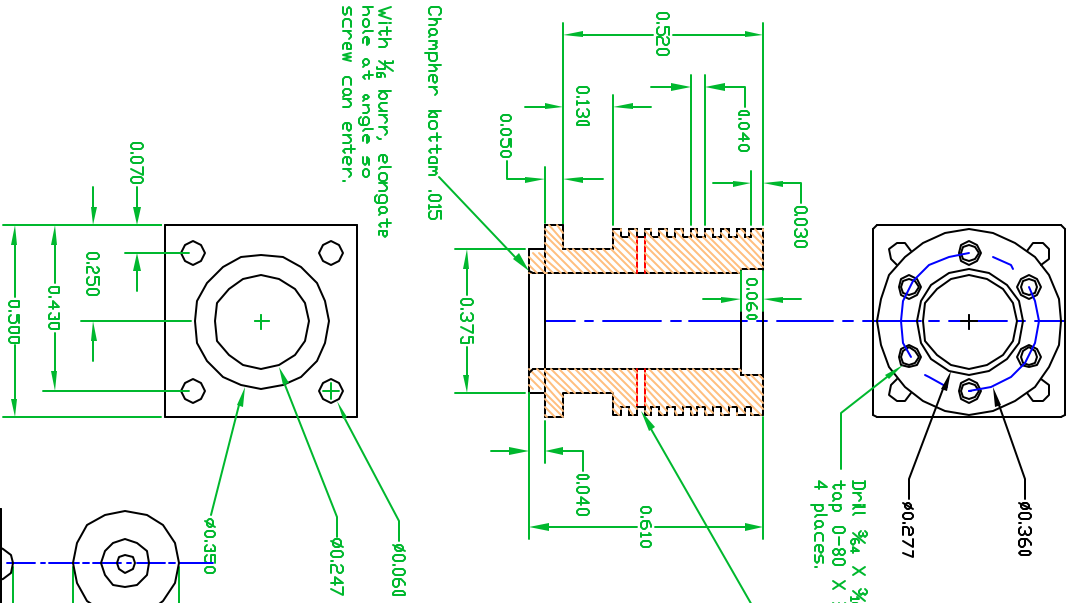
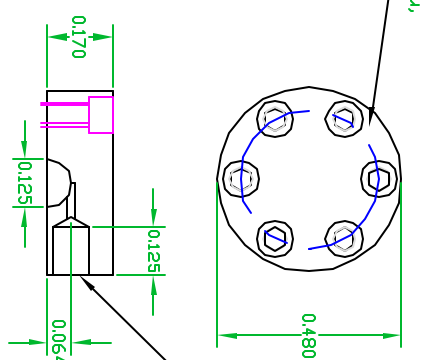


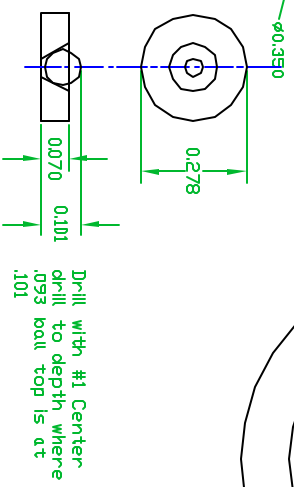
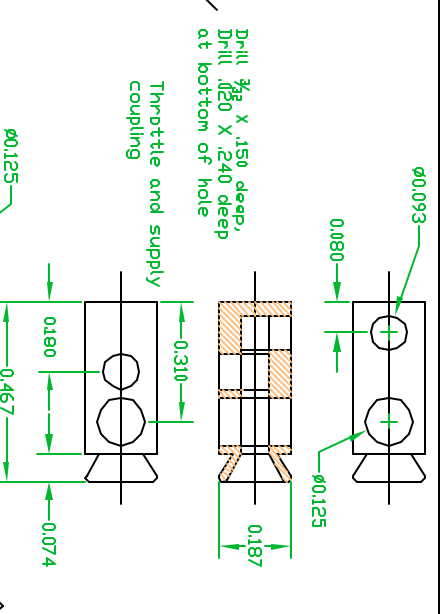
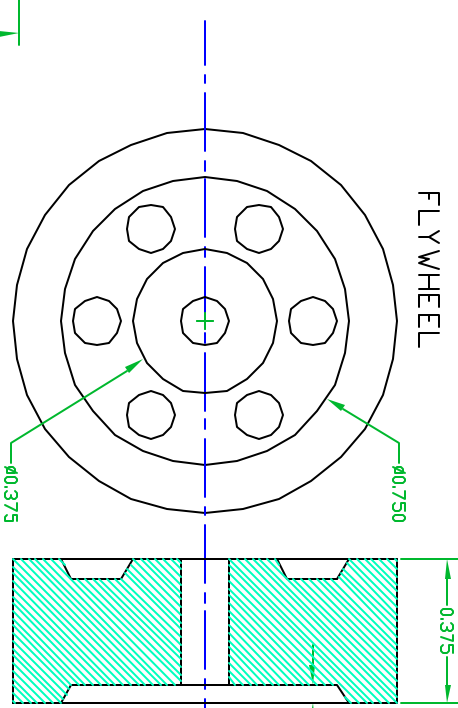
CYLINDER



change tube to 1/6 dia



FLYWHEEL



Thickness of the seat is .005 - .010 more than the combined counter bore depths in head and cylinder.
 Make from brass, nylon, delrin. Ball must make a air tight seal, no chatter in tapered seal area.
 Pin length should lift ball .010 - .015 at TDC.

David Kerzel

Pompano Beach, Florida USA

This drawing may be used or modified for any nonprofit purpose. All accuracy and safety issues are the user's responsibility and the provider and originator are in no way responsible or liable. (C) David Kerzel, 2003

Assembly
 Mini CO2 Vertical 2

Title
 Cylinder & Head

Date: 09/06/2003 Drawing
 Revision: 11 Mini_V2-03