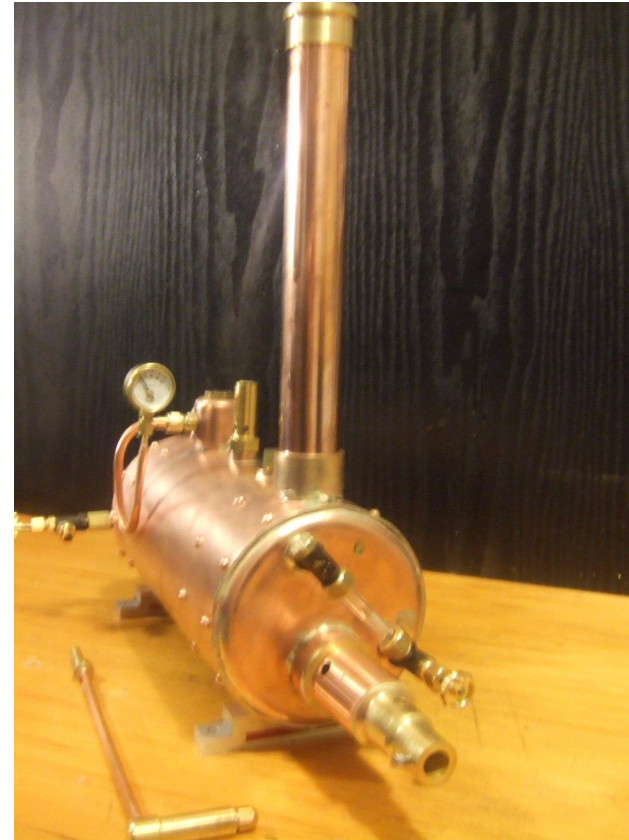
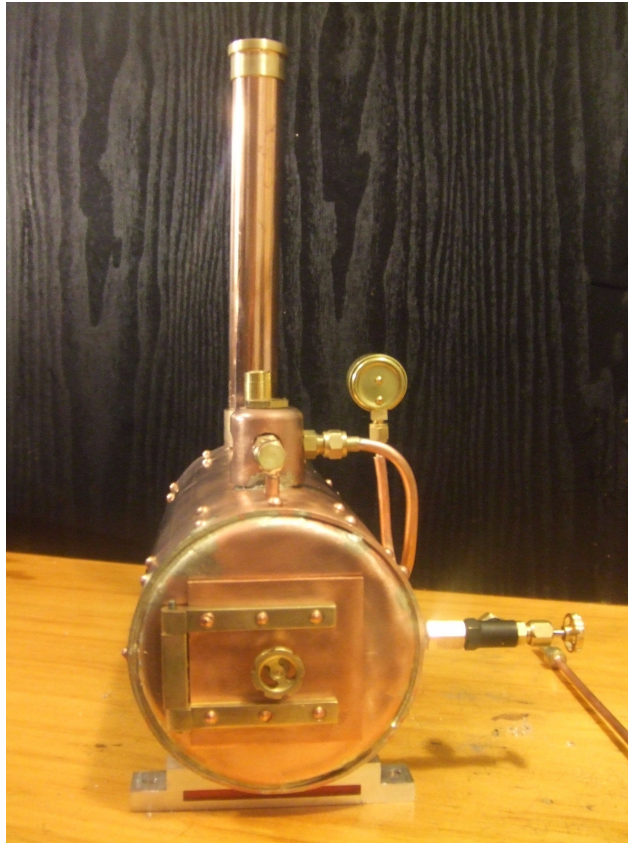


SCOTCH MARINE TYPE BOILER



A simple boiler based on the "Scotch" design produced as a design & build project by "Doubletop" published on the <http://www.homemodelenginemachinist.com> website.

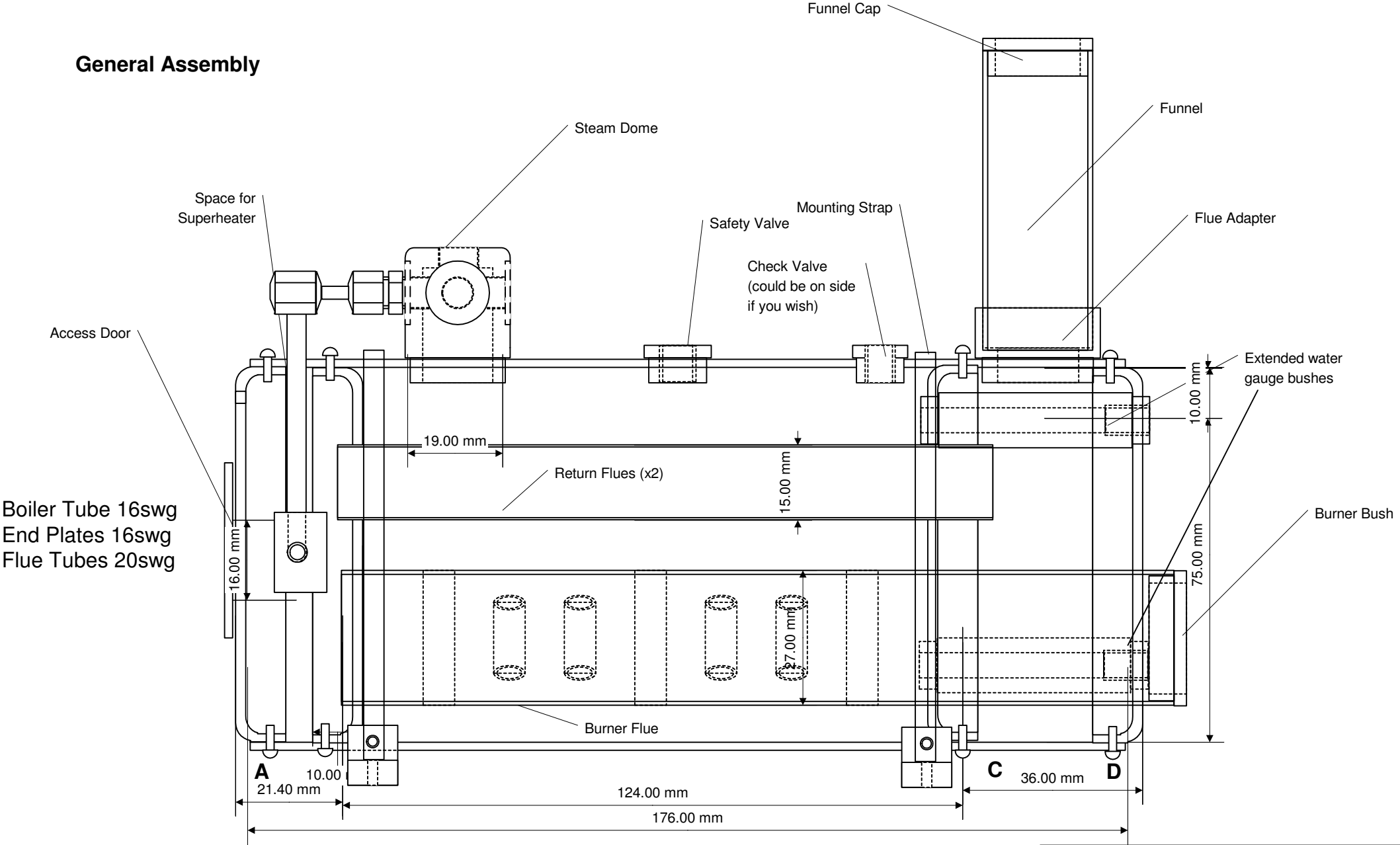
The drawings are based on the single copy of the boiler built as shown above. They serve to provide a general set of plans and they may not be complete and there is no guarantees given or implied that they will be fit for your purposes.

That said I hope they are helpful to you.

If you build this it is at your risk and you will be responsible for ensuring it meets your local boiler safety regulations.

Scotch Type Marine Boiler	
DT Eng	Sheet 1 of 8
Scale: Full Size	25 July 2010
Version 6	

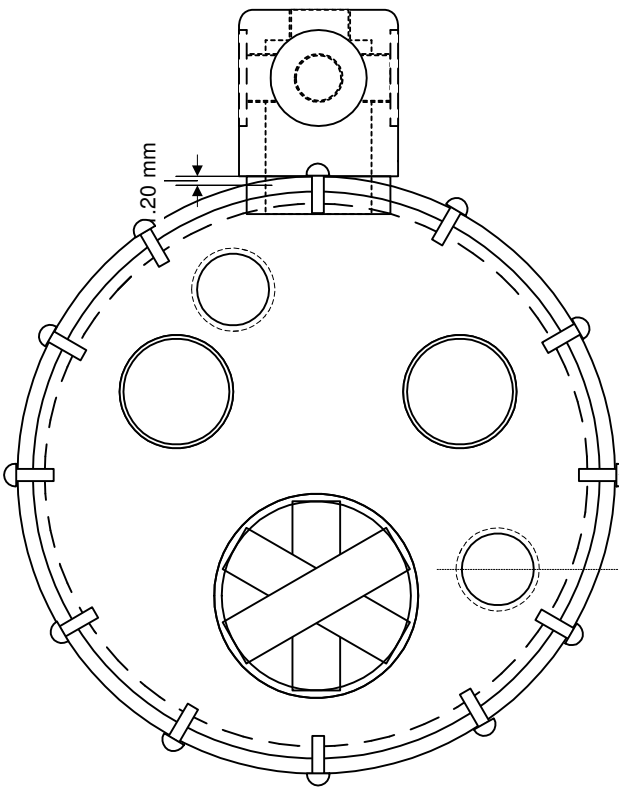
General Assembly



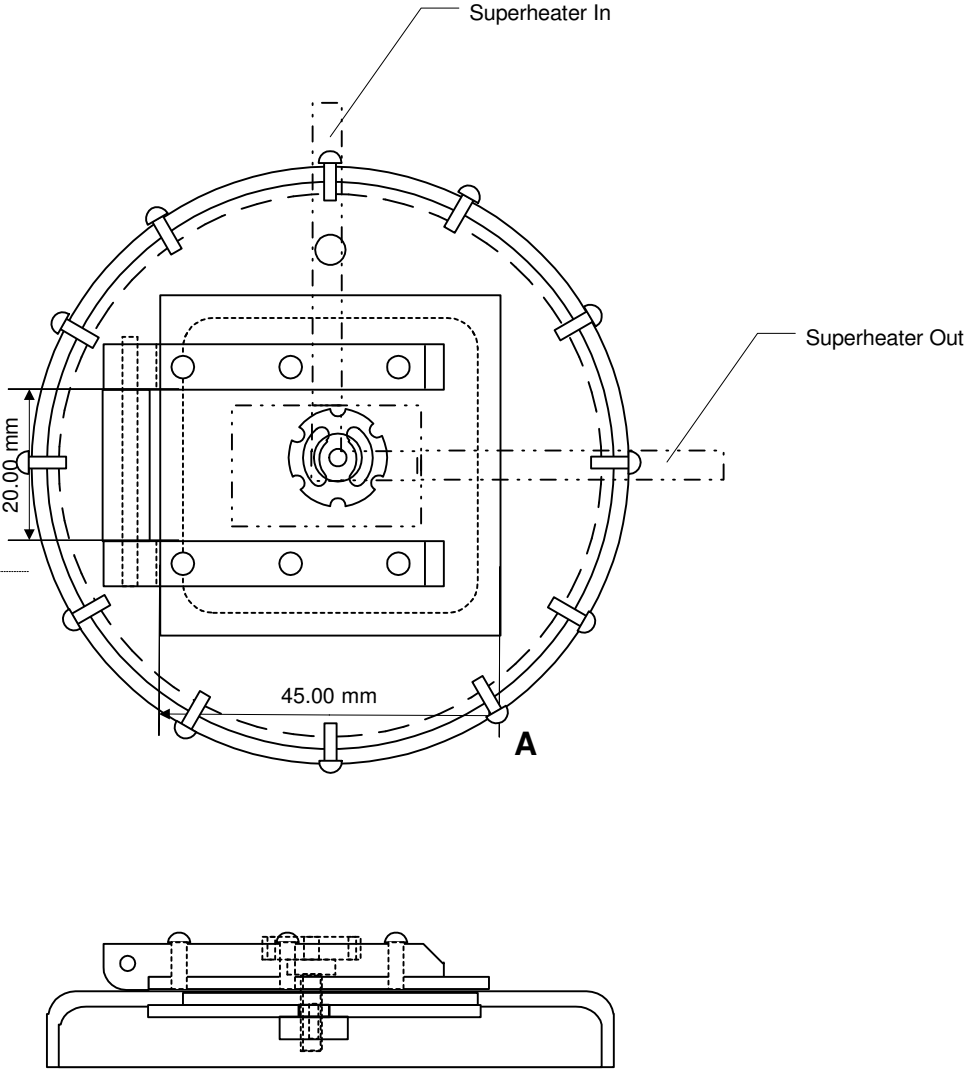
Note This boiler design is conceptual only any person planning to construct it is responsible for ensuring that it will meet their local regulations

Scotch Type Marine Boiler	
DT Eng	Sheet 2 of 8
Scale: Full Size	25 July 2010
Version 6	

General Assembly
End Views

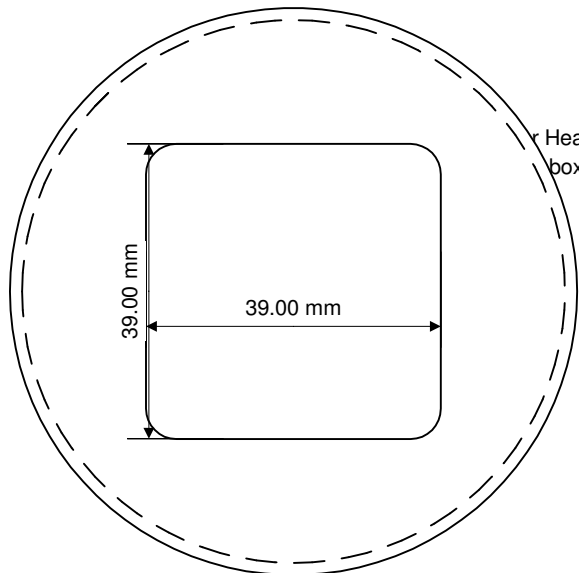


Not Riveted
1/16" rivets to
hold plates in
place whilst
soldering and
add a bit of bling.

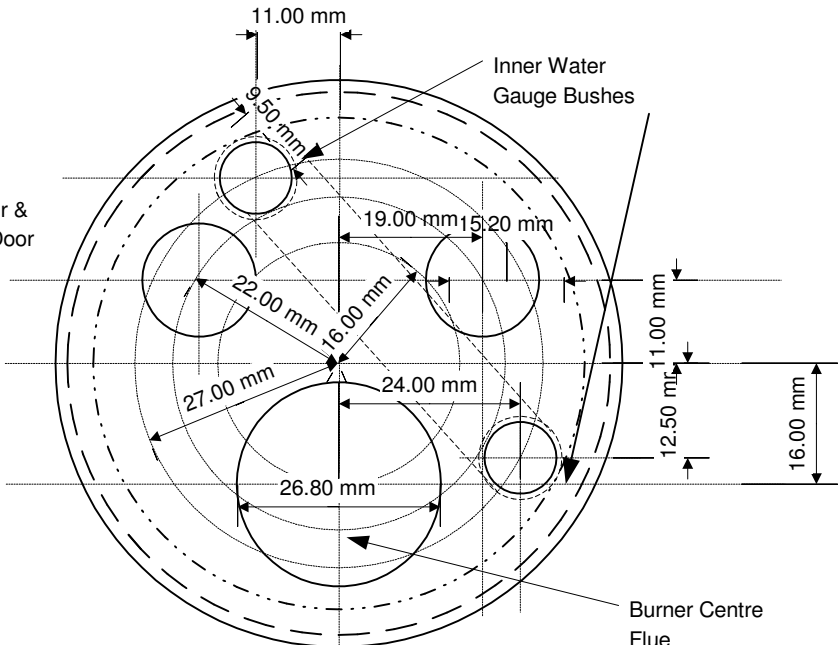


Scotch Type Marine Boiler	
DT Eng	Sheet 3 of 8
Scale: Full Size	25 July 2010
Version 6	

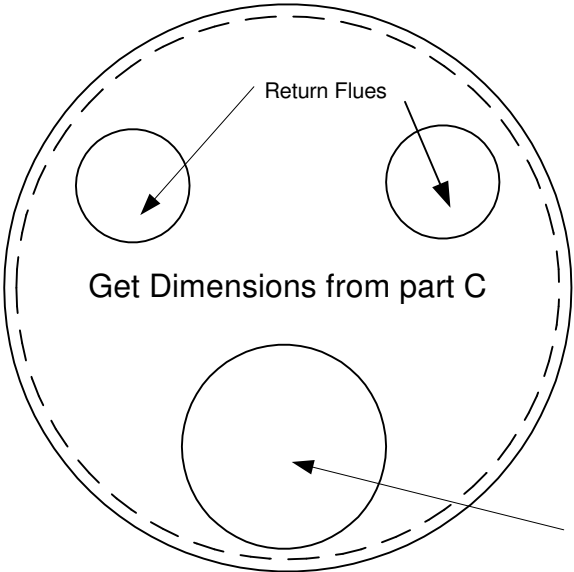
Boiler Plates



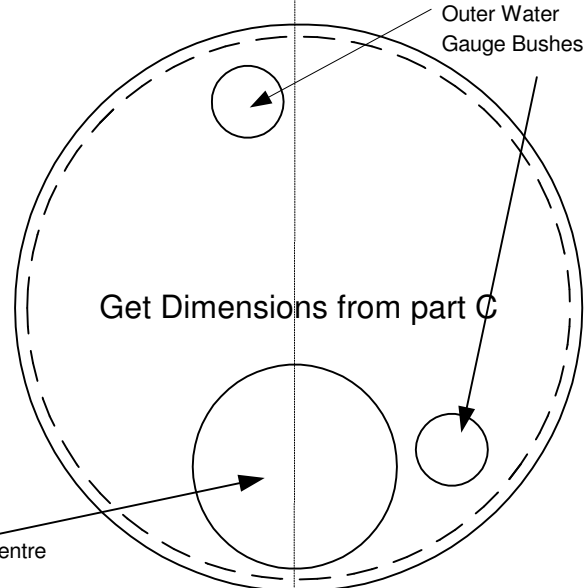
A



C



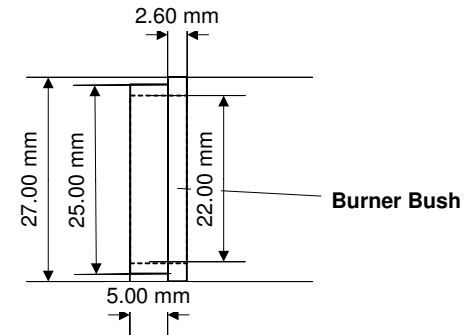
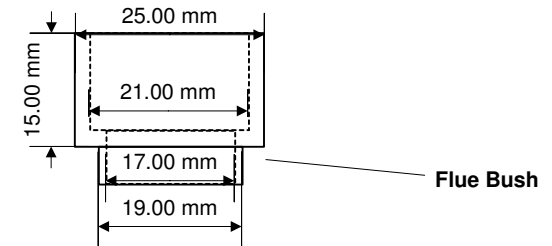
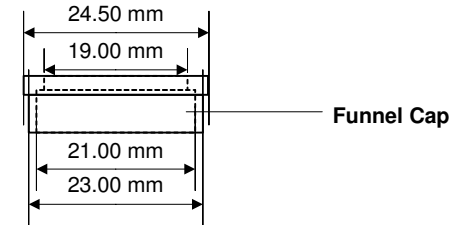
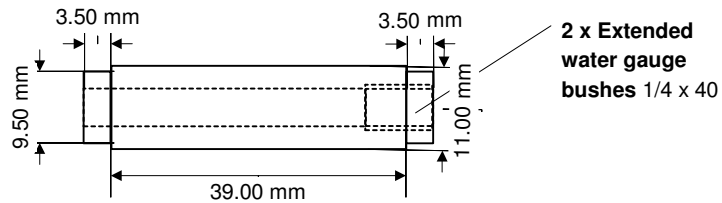
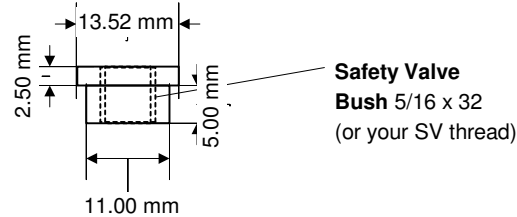
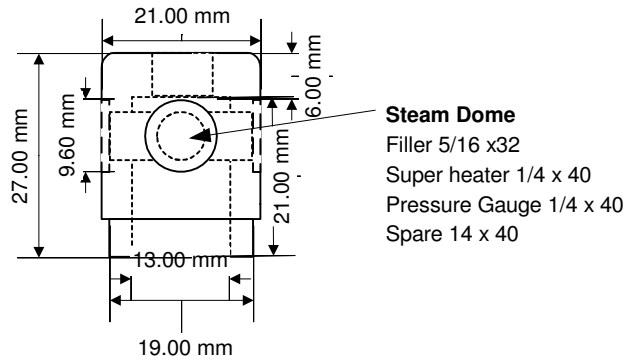
B



D

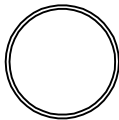
Scotch Type Marine Boiler	
DT Eng	Sheet 4 of 8
Scale: Full Size	25 July 2010
Version 6	

Bushes and other fittings

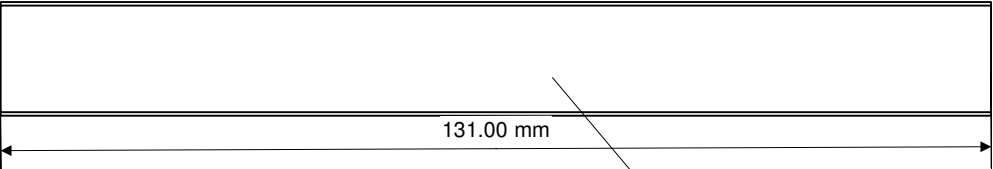
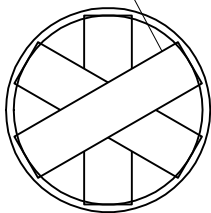


Scotch Type Marine Boiler	
DT Eng	Sheet 5 of 8
Scale: Full Size	25 July 2010
Version 6	

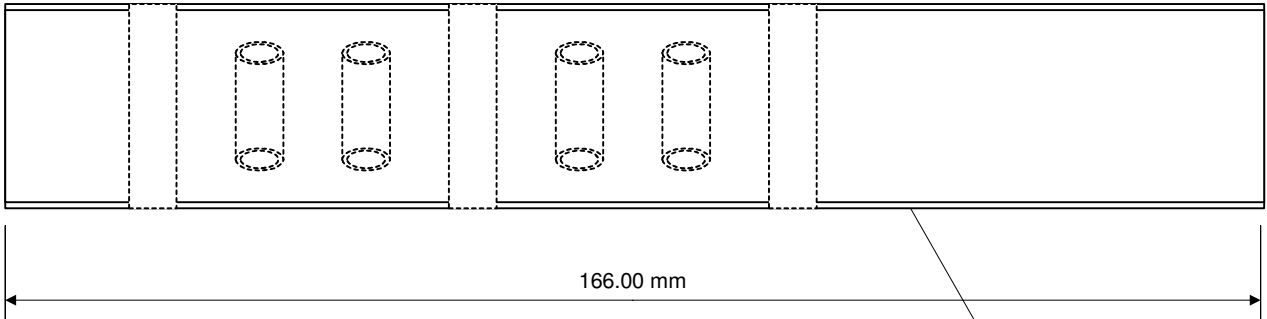
Mounting Feet
Super Heater
Burner and Return Flues



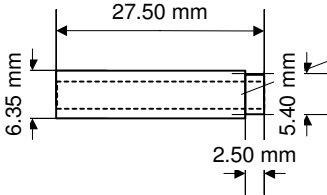
Cross Tubes 1/4"



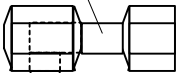
Return Flues x 2



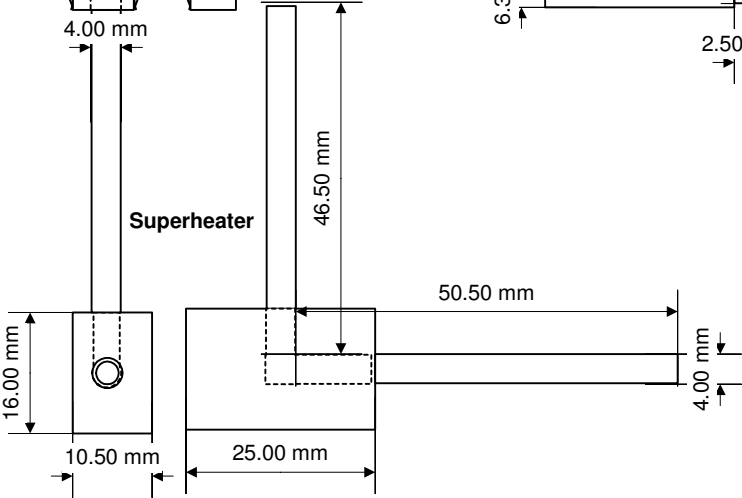
Burner Flue



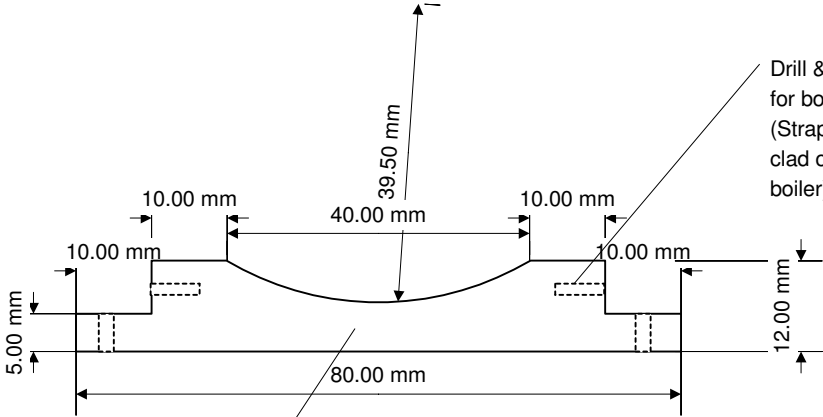
Flue Cross Tubes x 7



Right angle and union to suit steam dome attachment (fit after installing superheater)



Superheater

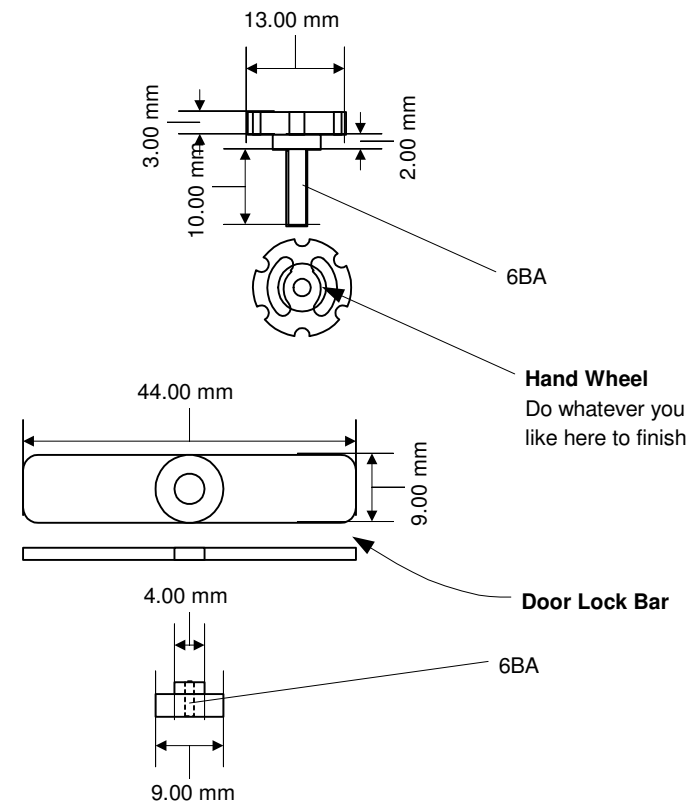
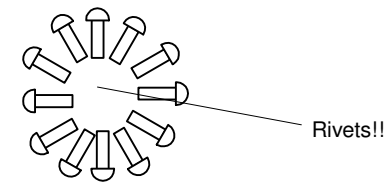
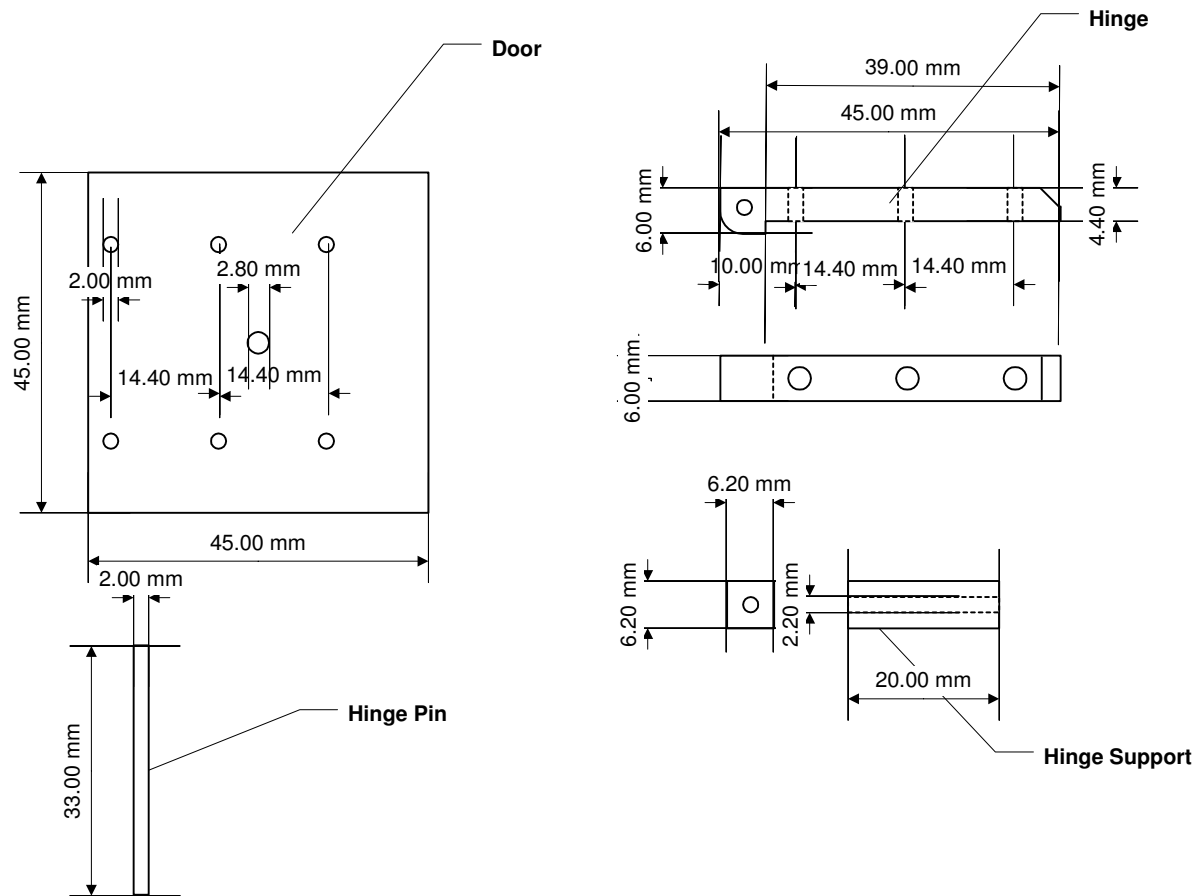


Mounting Feet x 2

Drill & Tap 6BA for boiler straps (Straps to suit clad or unclad boiler)

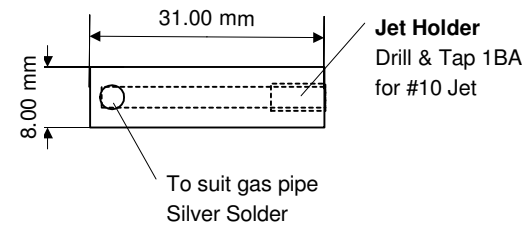
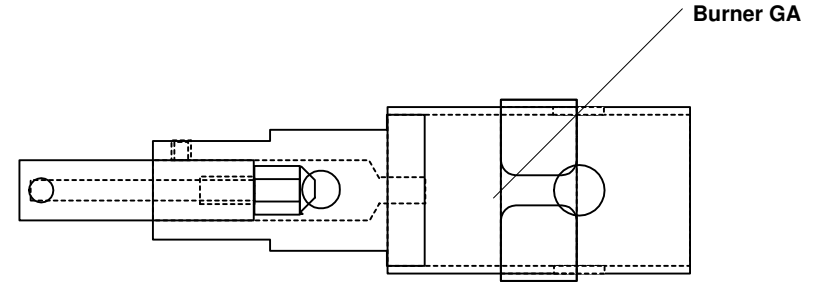
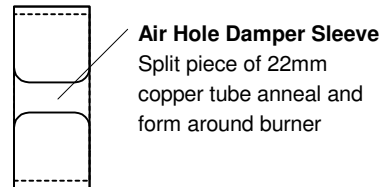
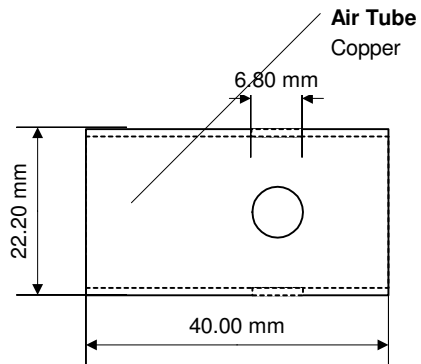
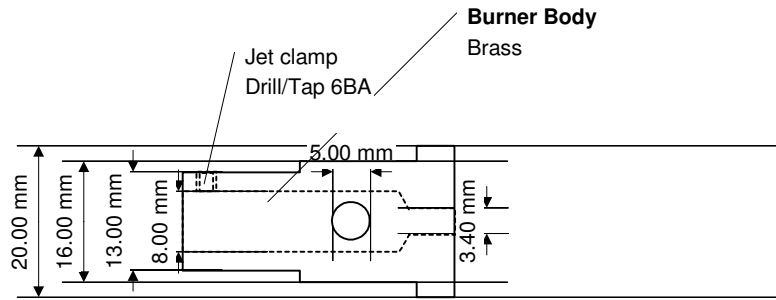
Scotch Type Marine Boiler	
DT Eng	Sheet 6 of 8
Scale: Full Size	25 July 2010
Version 6	

Boiler Door
Hinges
Hinge Pin
Hand Wheel
Locking Bar



Scotch Type Marine Boiler	
DT Eng	Sheet 7 of 8
Scale: Full Size	25 July 2010
Version 6	

Burner



Scotch Type Marine Boiler	
DT Eng	Sheet 8 of 8
Scale: Full Size	25 July 2010
Version 6	