

DET -1- 3<sup>rd</sup> ANGLE PROJECTION

DET -2- 3<sup>rd</sup> ANGLE PROJECTION

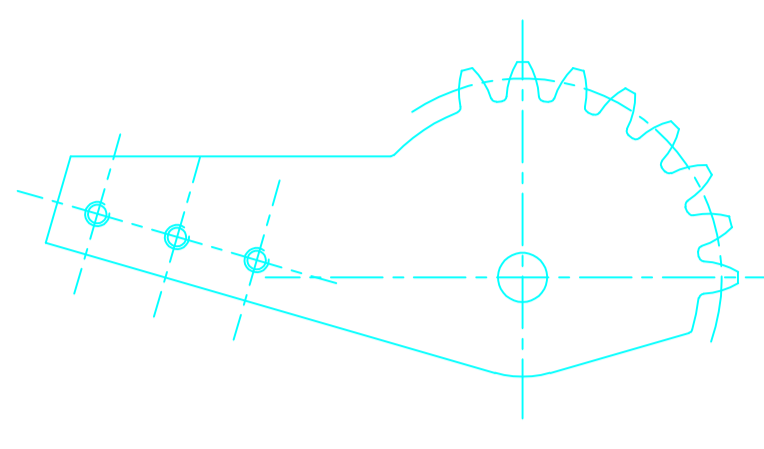
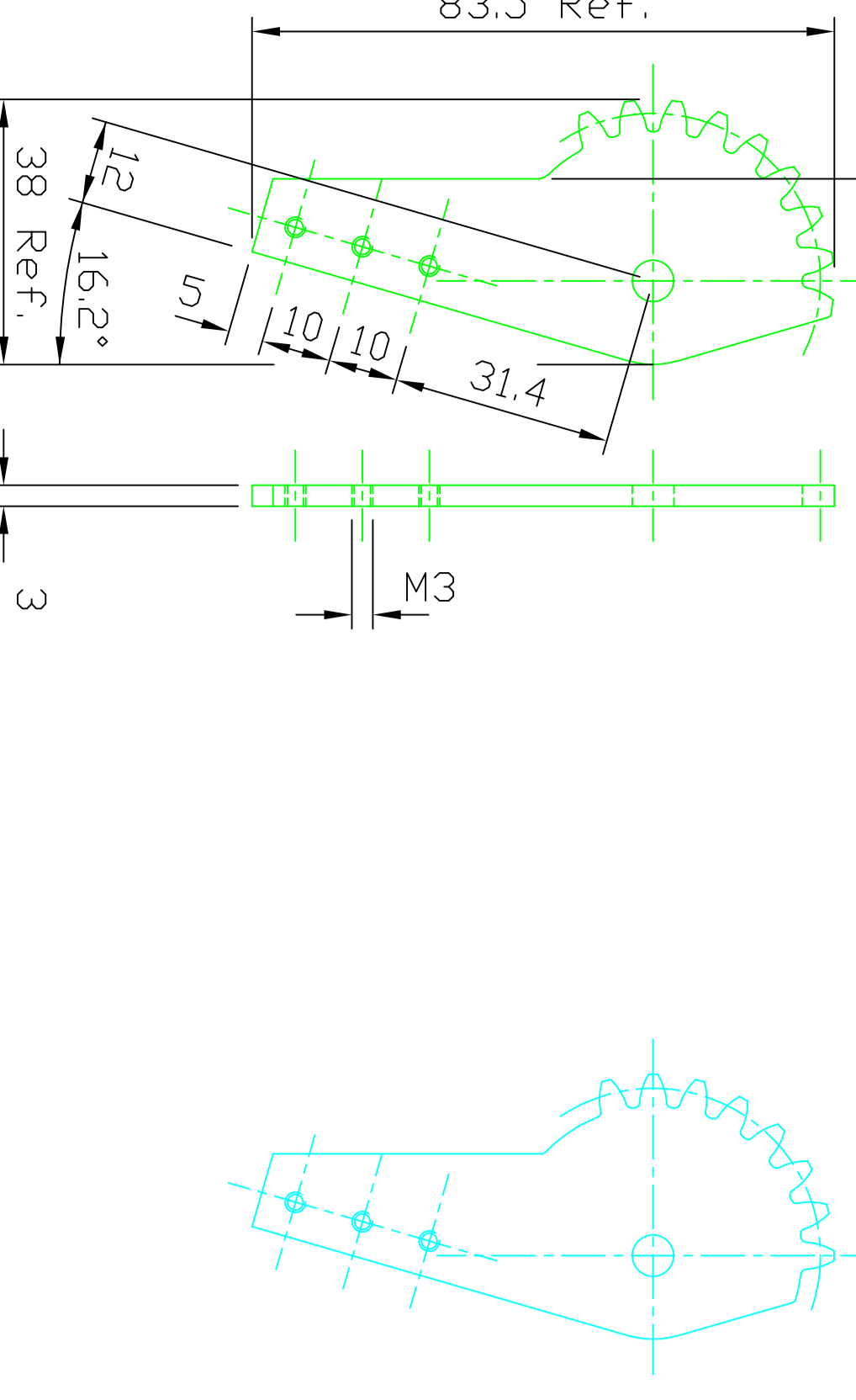
L.H. GEAR  
Ma.t'l:- 3mm 304 STAINLESS

R.H. GEAR  
Ma.t'l:- 3mm 304 STAINLESS

1 Dff. WATERJET CUT

1 Dff. WATERJET CUT

GEAR IS M2 x 24T @20° PRESSURE ANGLE  
NOTE: LEFT AND RIGHT HAND ARE NOT MIRROR IMAGE  
NOTE: TOOTH PITCH OFFSET



DET -3- 3<sup>rd</sup> ANGLE PROJECTION

DET -4- 3<sup>rd</sup> ANGLE PROJECTION

DET -5- 3<sup>rd</sup> ANGLE PROJECTION

DET -6- 3<sup>rd</sup> ANGLE PROJECTION

DET -7- 3<sup>rd</sup> ANGLE PROJECTION

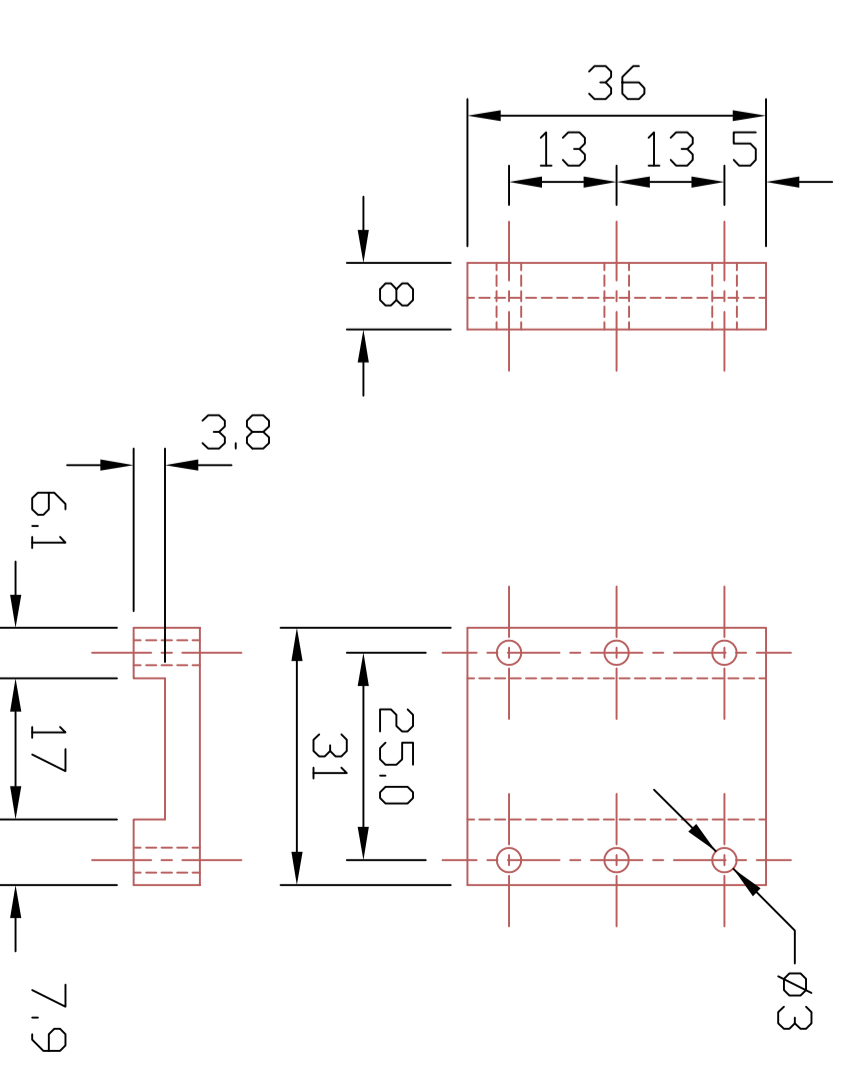
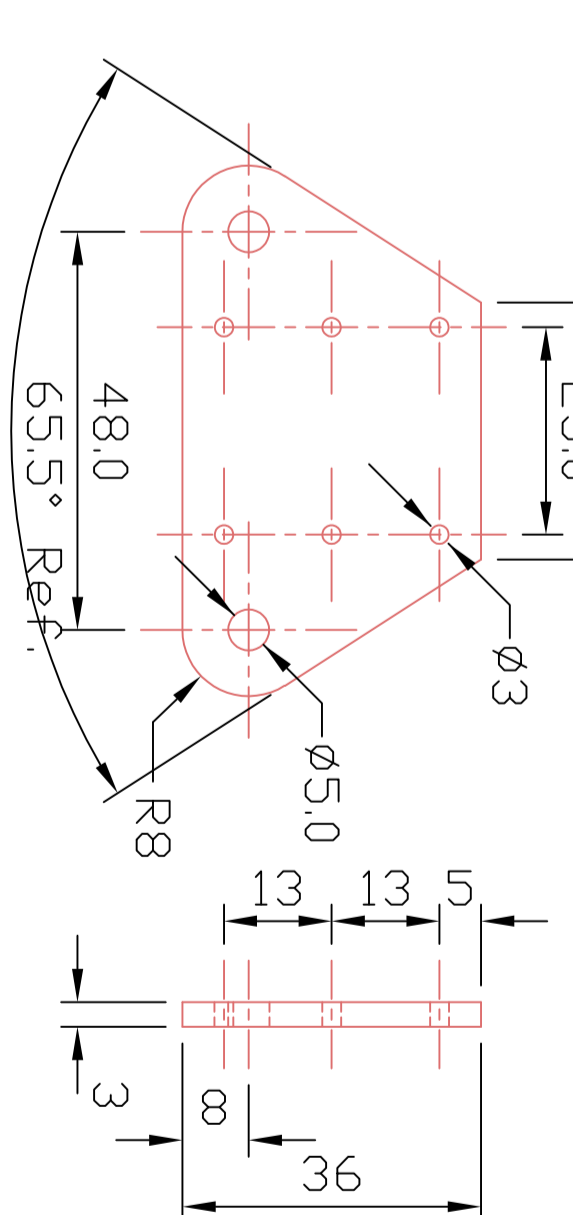
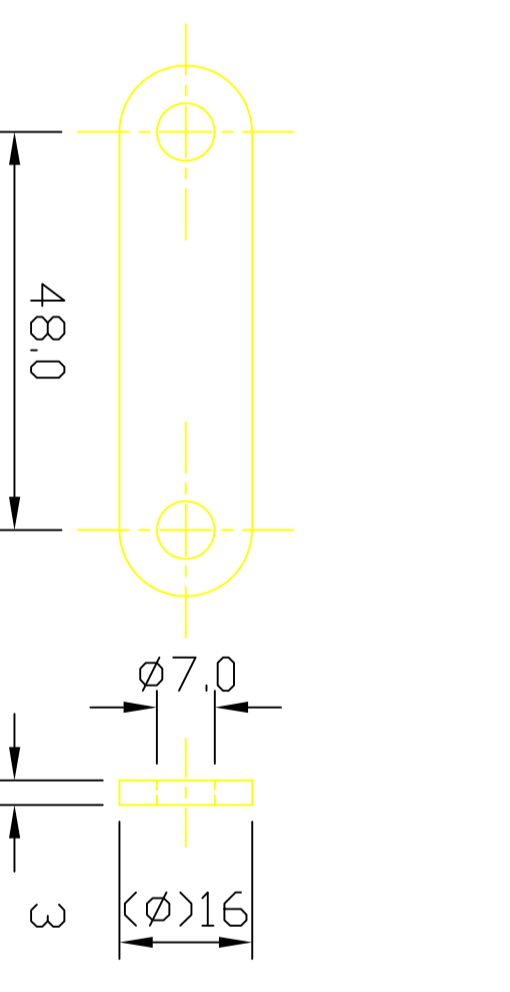
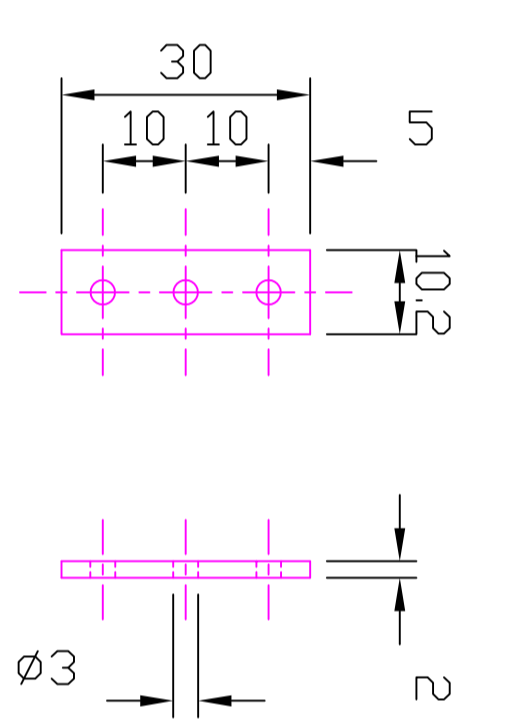
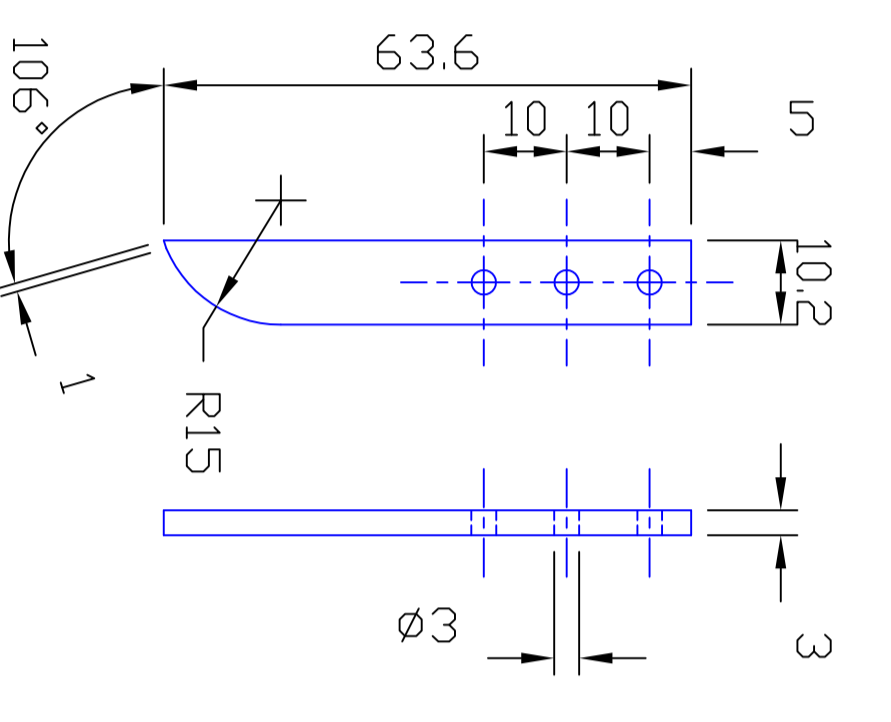
GAUGE FINGER  
Ma.t'l:- 3mm 304 STAINLESS

SPACER  
Ma.t'l:- 2mm 304 STAINLESS

FRONT LINK  
Ma.t'l:- 3mm 304 STAINLESS

REAR LINK  
Ma.t'l:- 3mm 304 STAINLESS

MOUNTING BLOCK  
Ma.t'l:- 8mm 304 STAINLESS



THESE DIMS TD SUIT VERNIER

DET -7- 3<sup>rd</sup> ANGLE PROJECTION

MOUNTING BLOCK  
Ma.t'l:- 8mm 304 STAINLESS

1 Dff. WATERJET CUT

DET -1- 3<sup>rd</sup> ANGLE PROJECTION

DET -2- 3<sup>rd</sup> ANGLE PROJECTION

DET -3- 3<sup>rd</sup> ANGLE PROJECTION

DET -4- 3<sup>rd</sup> ANGLE PROJECTION

DET -5- 3<sup>rd</sup> ANGLE PROJECTION

DET -6- 3<sup>rd</sup> ANGLE PROJECTION

DET -7- 3<sup>rd</sup> ANGLE PROJECTION

L.H. GEAR  
Ma.t'l:- 3mm 304 STAINLESS

R.H. GEAR  
Ma.t'l:- 3mm 304 STAINLESS

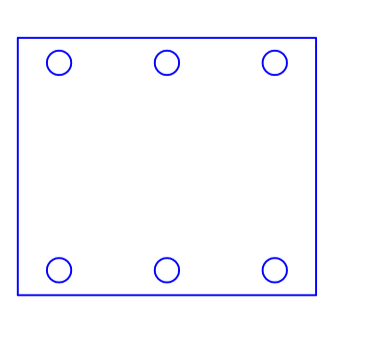
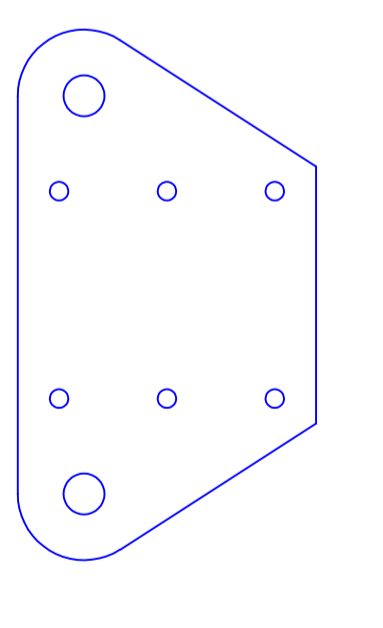
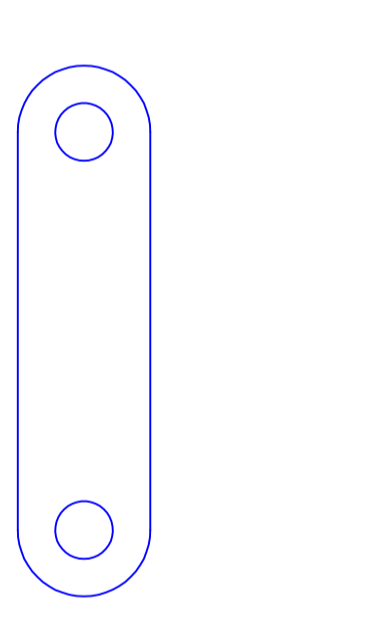
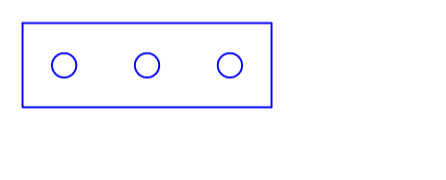
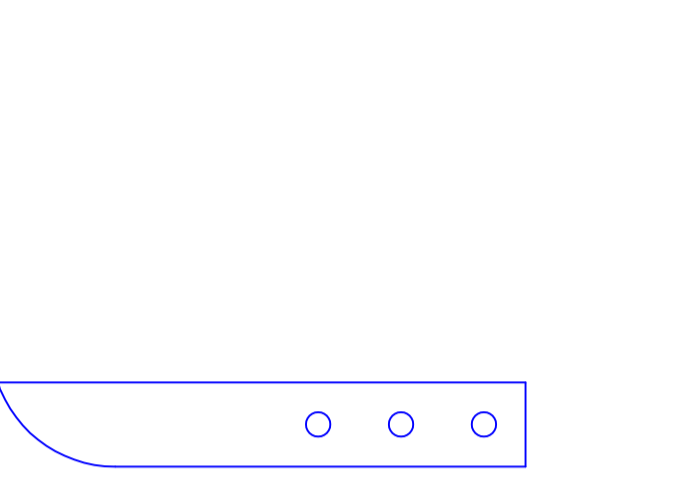
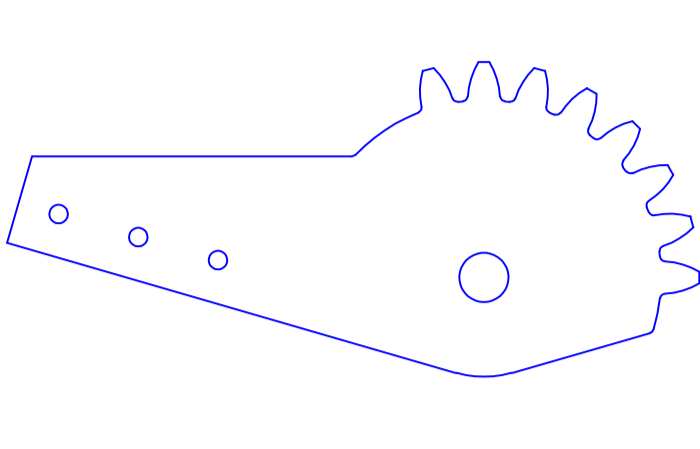
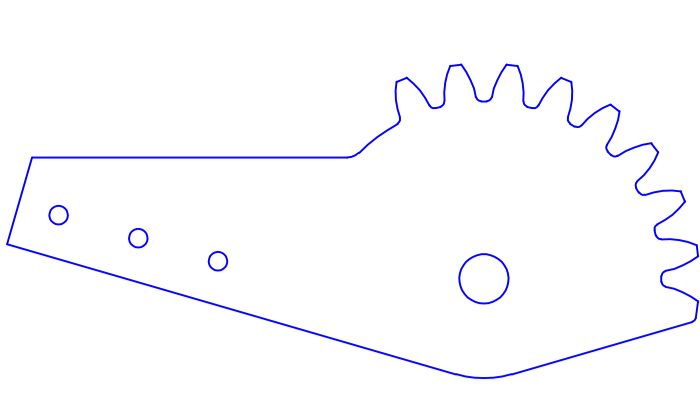
GAUGE FINGER  
Ma.t'l:- 3mm 304 STAINLESS

SPACER  
Ma.t'l:- 2mm 304 STAINLESS

FRONT LINK  
Ma.t'l:- 3mm 304 STAINLESS

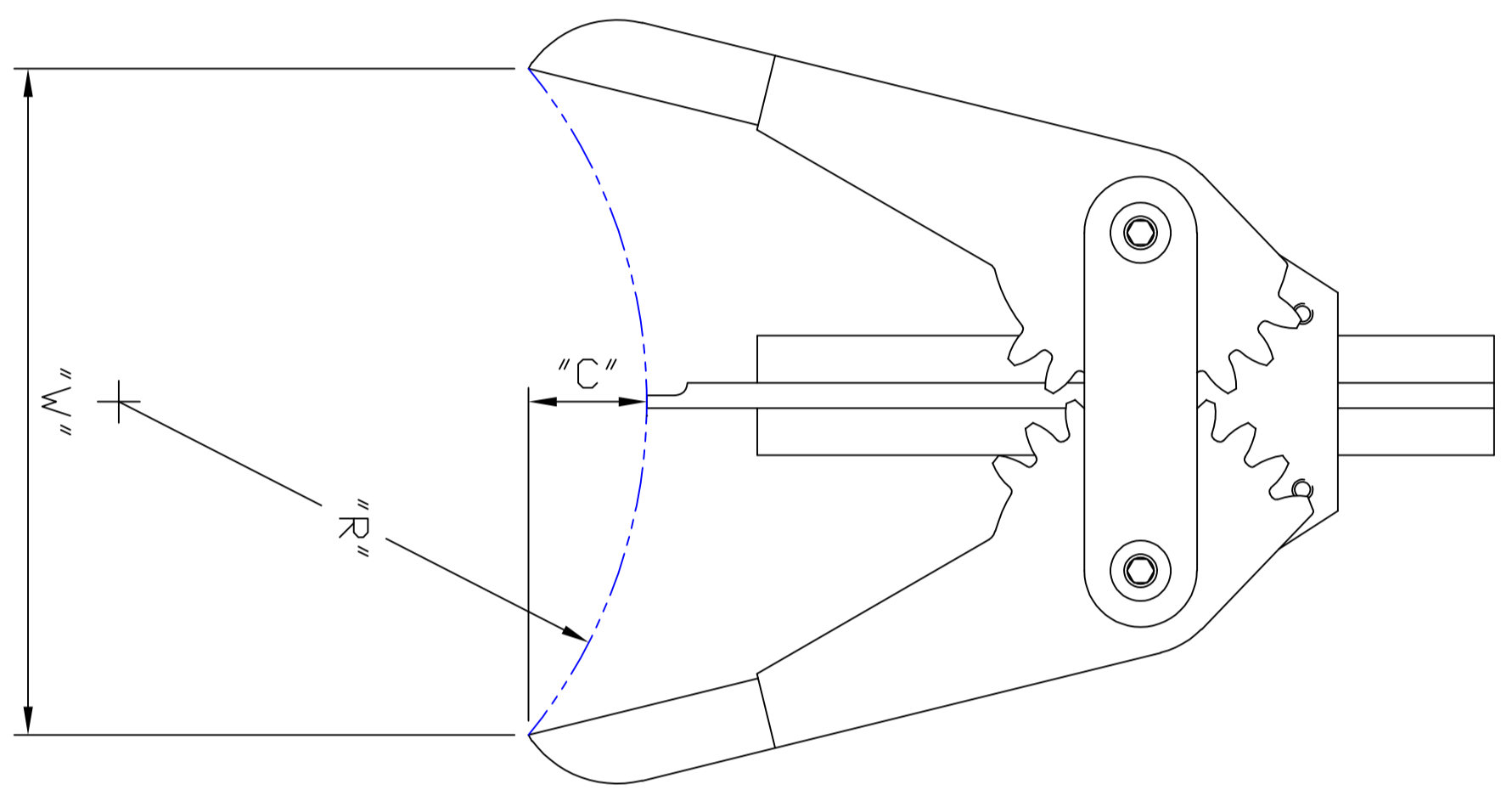
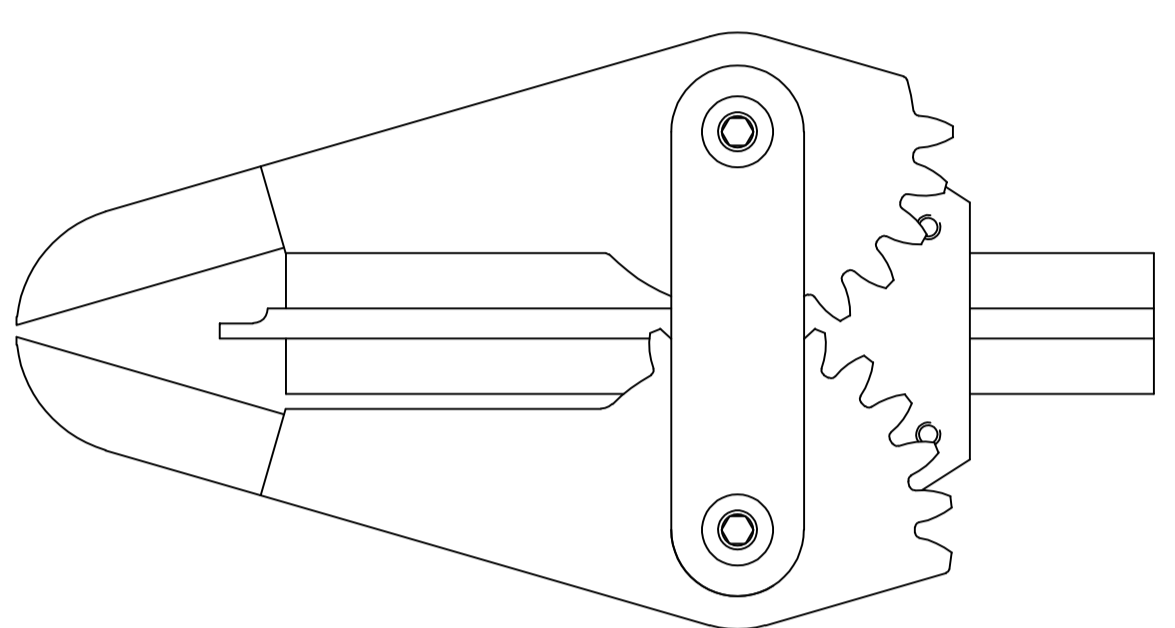
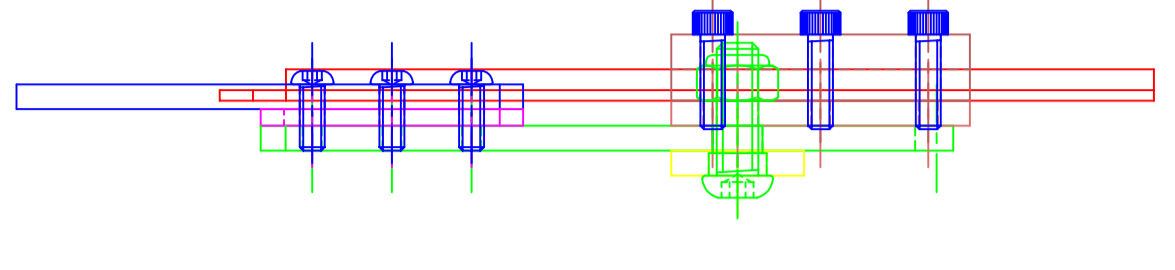
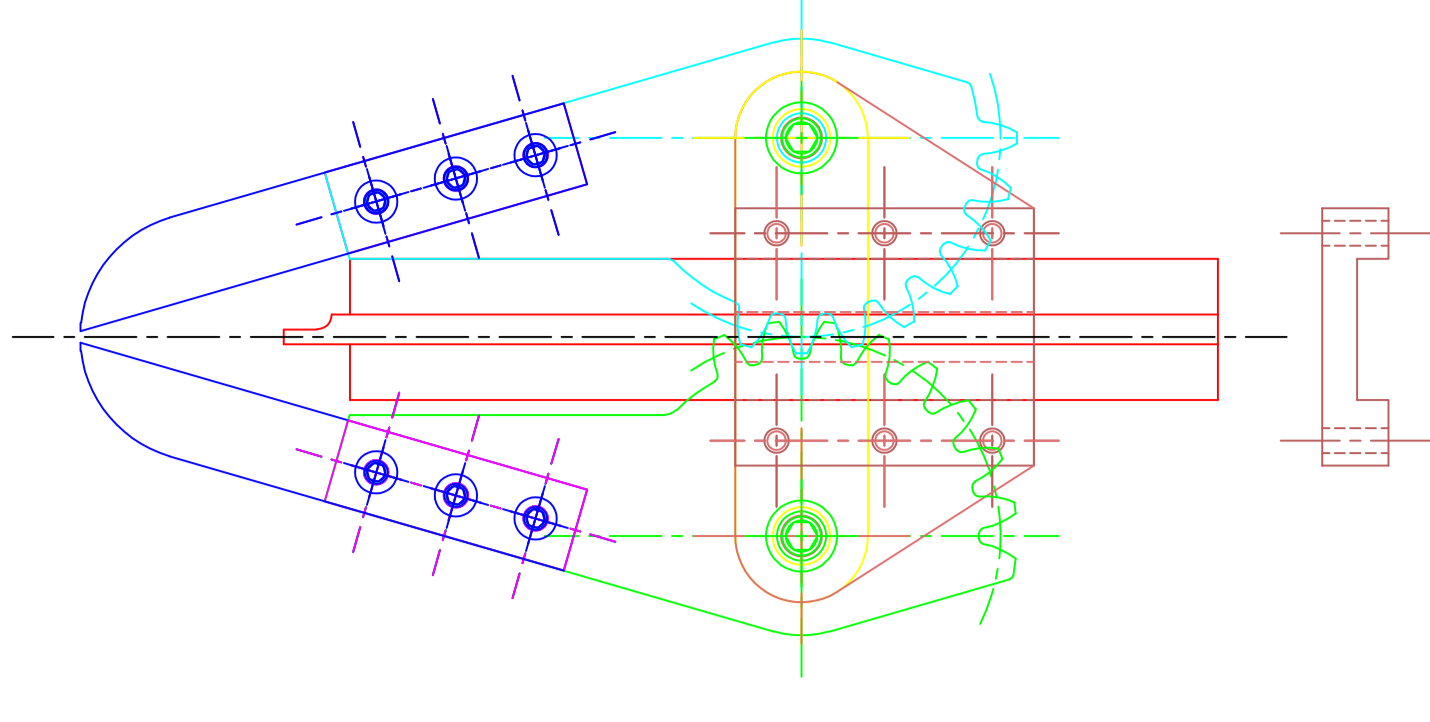
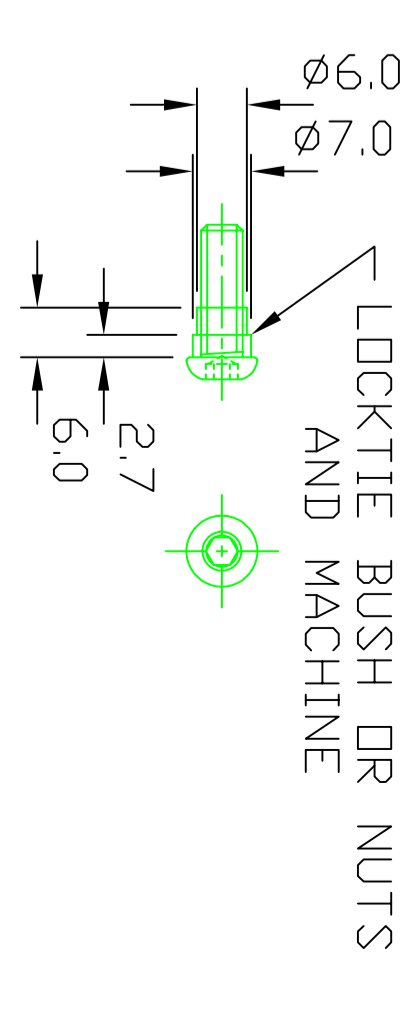
REAR LINK  
Ma.t'l:- 3mm 304 STAINLESS

MOUNTING BLOCK  
Ma.t'l:- 8mm 304 STAINLESS



DET -8- 3<sup>rd</sup> ANGLE PROJECTION

SHOULDER SCREW  
Ma.t'l:- M5 BUTTON CAP SCREW  
2 DFF. STAINLESS



$$R = \frac{C^2 + \left(\frac{W}{2}\right)^2}{2C}$$

GEAR IS M2 x 24T @20° PRESSURE ANGLE