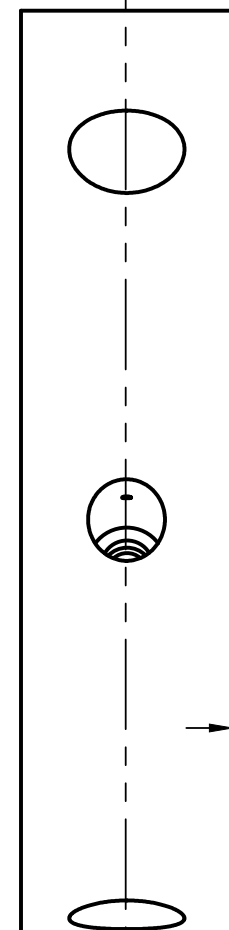


A



A

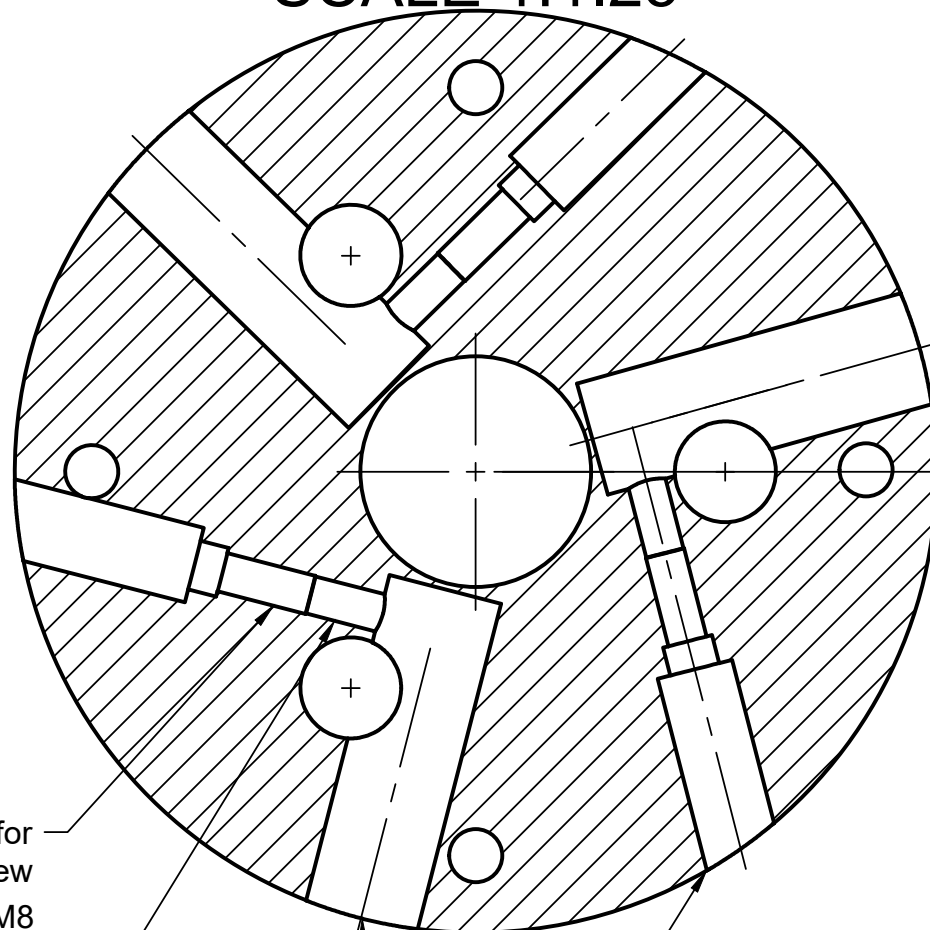
Ø 0.250" for retaining pin

Threaded for retaining screw  
3/8" or M8

82.875°

0.440

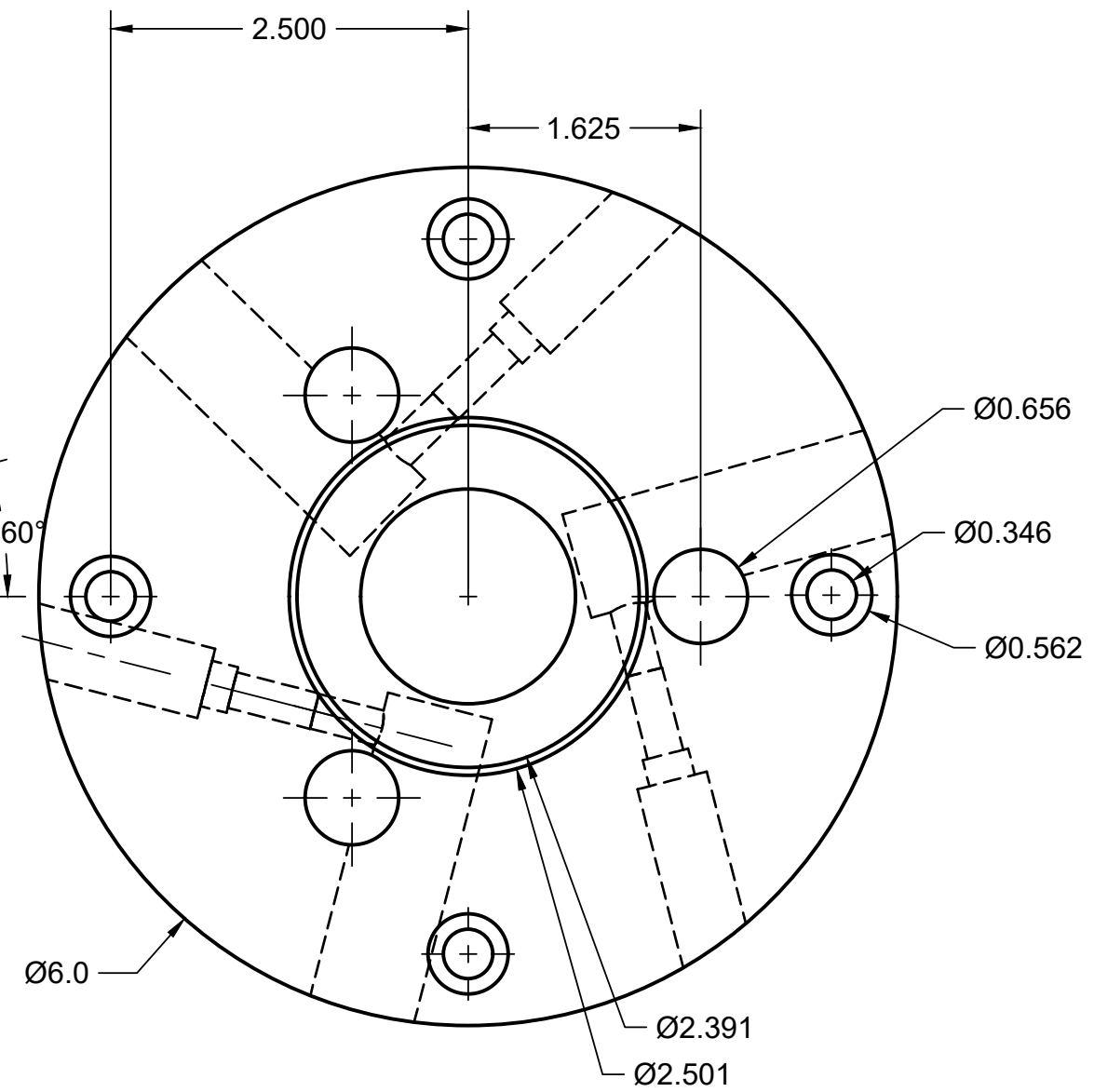
# SECTION A-A SCALE 1:1.25



Ø0.750 for cam -  
ok to break through to center  
bore (preferable  
not to - helps  
keep swarf out of  
cam holes)

Ø0.50  
clearance  
hole for  
retaining  
screw

15.60°



APPROVED			SIZE B	CODE	DWG NO	REV
CHECKED						
DRAWN	Mike Ross	2017-01-21	SCALE 1:1.25		WEIGHT	SHEET 1/1

PROJECT	
Shop Fixtures	
TITLE	
D1-4 Chuck to Rotary Table Adapter	