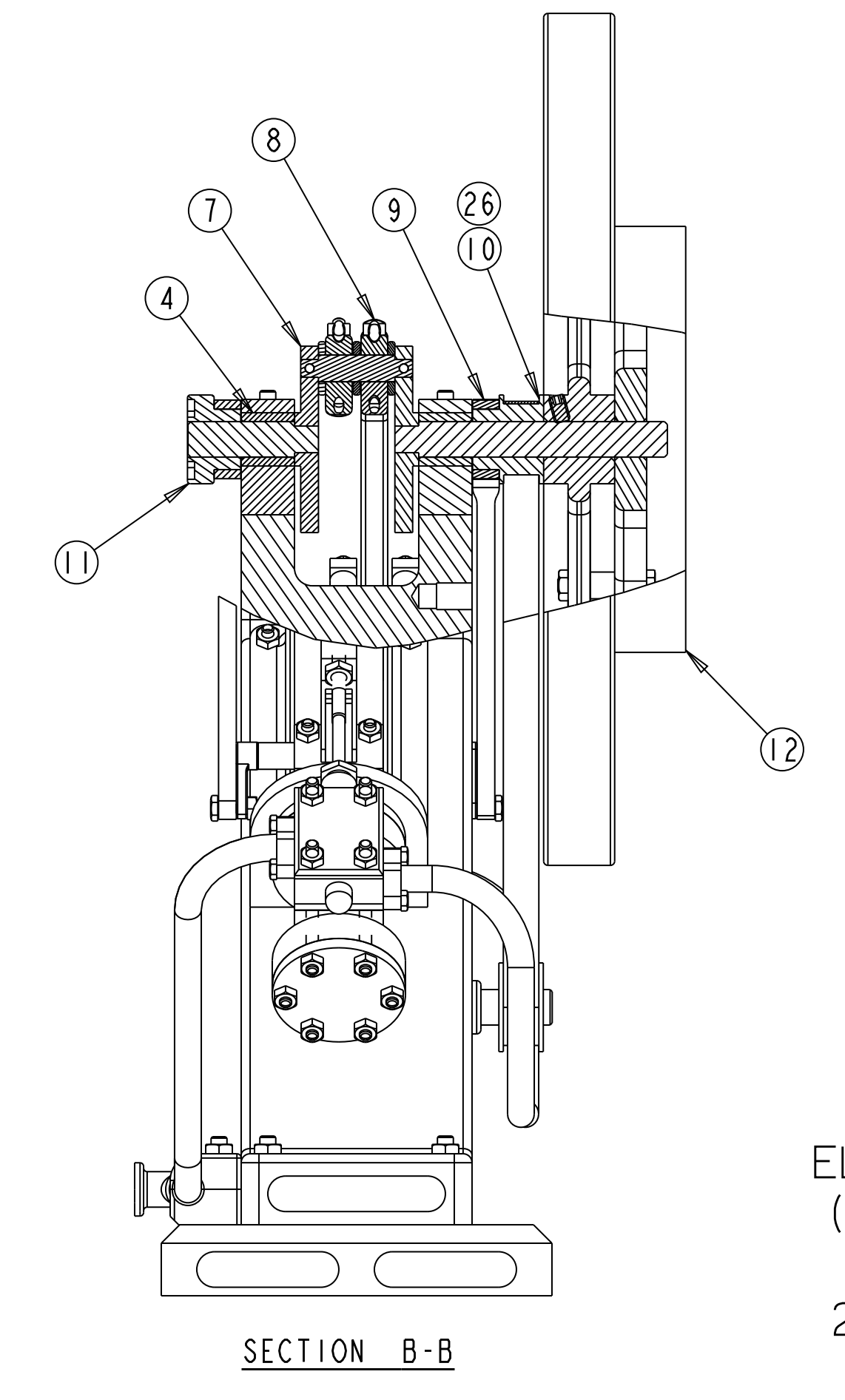
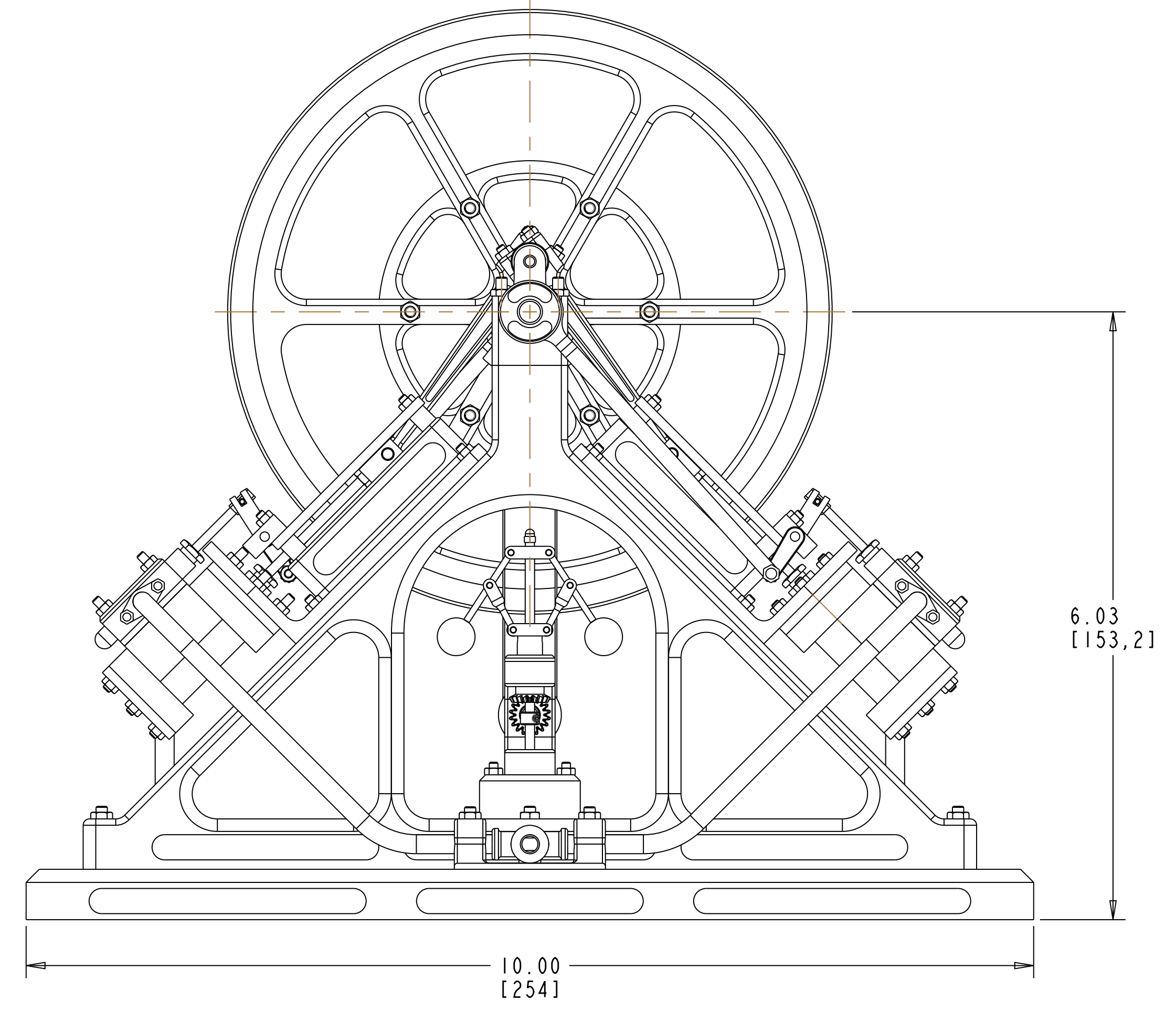
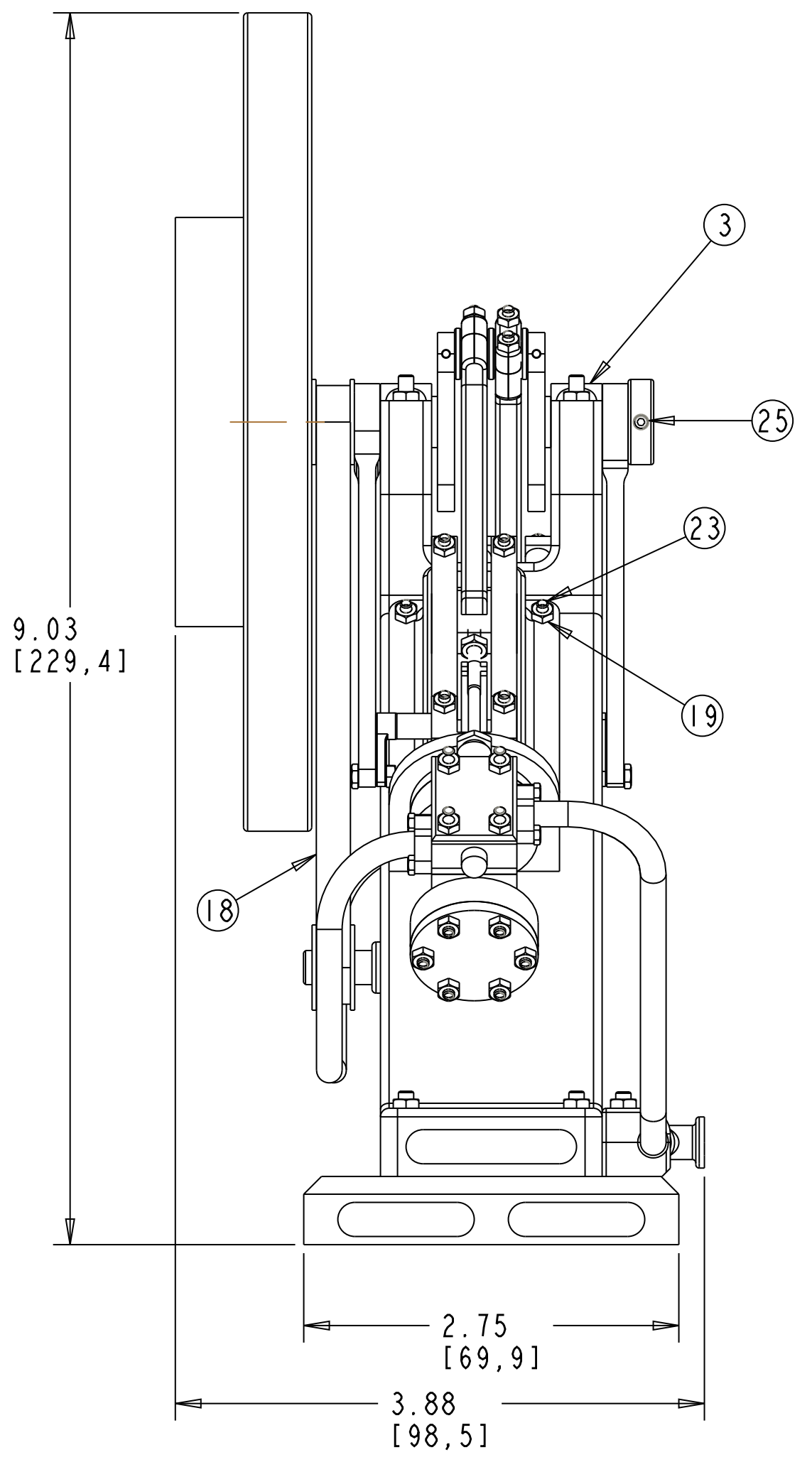
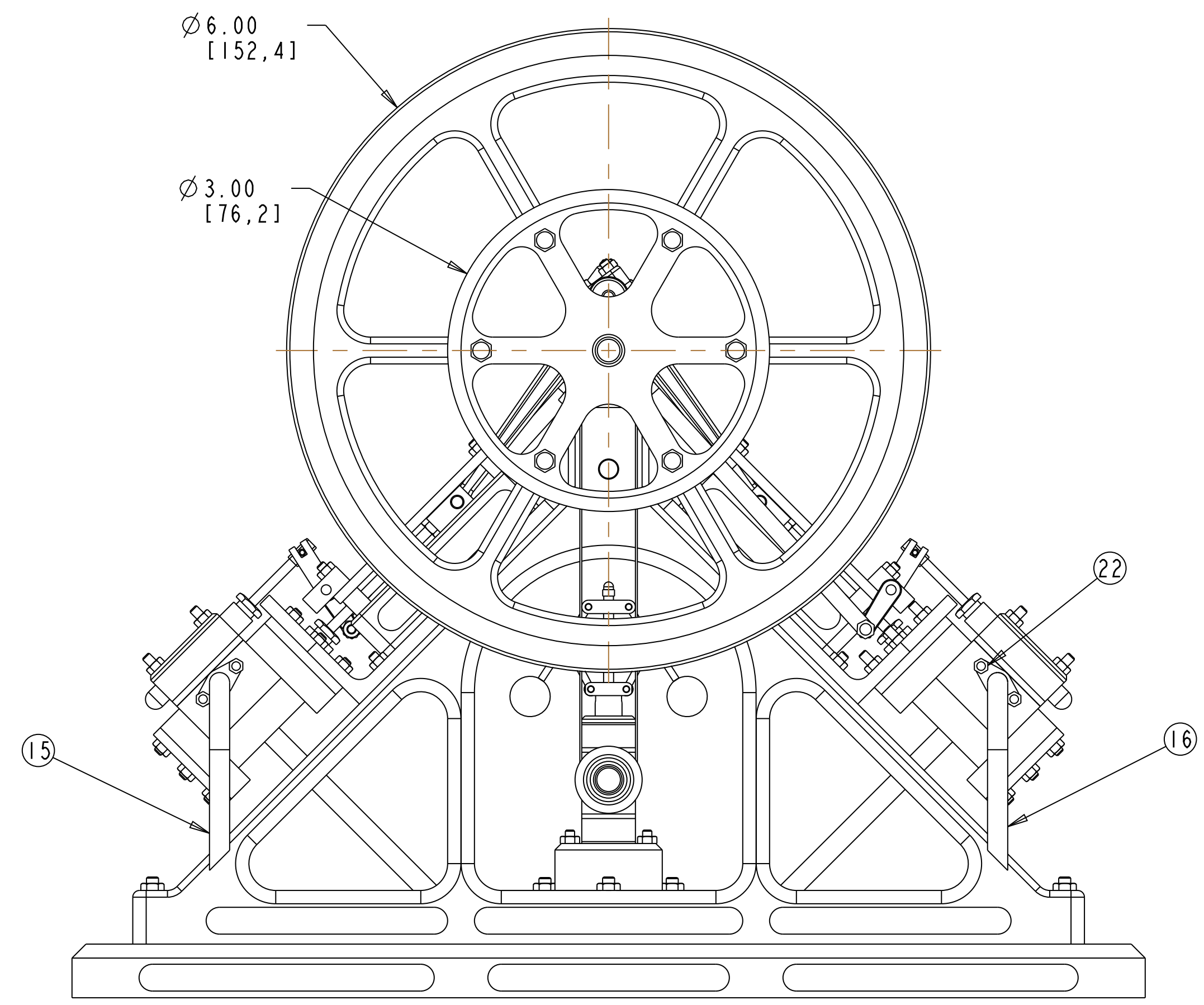
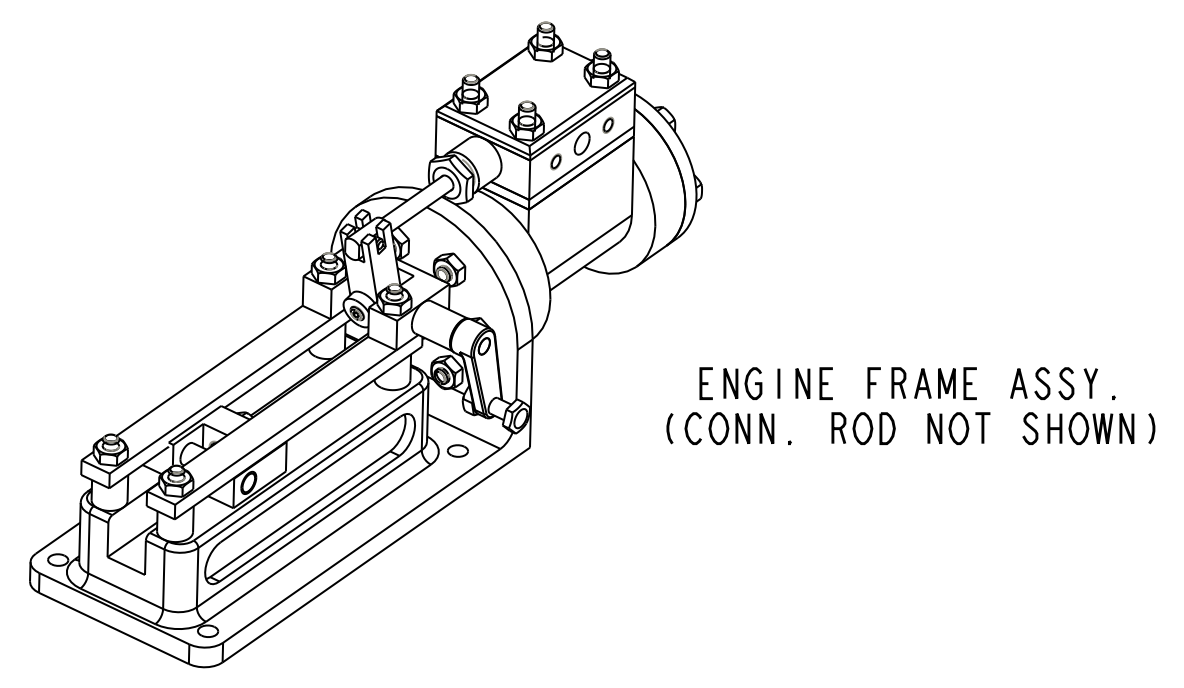
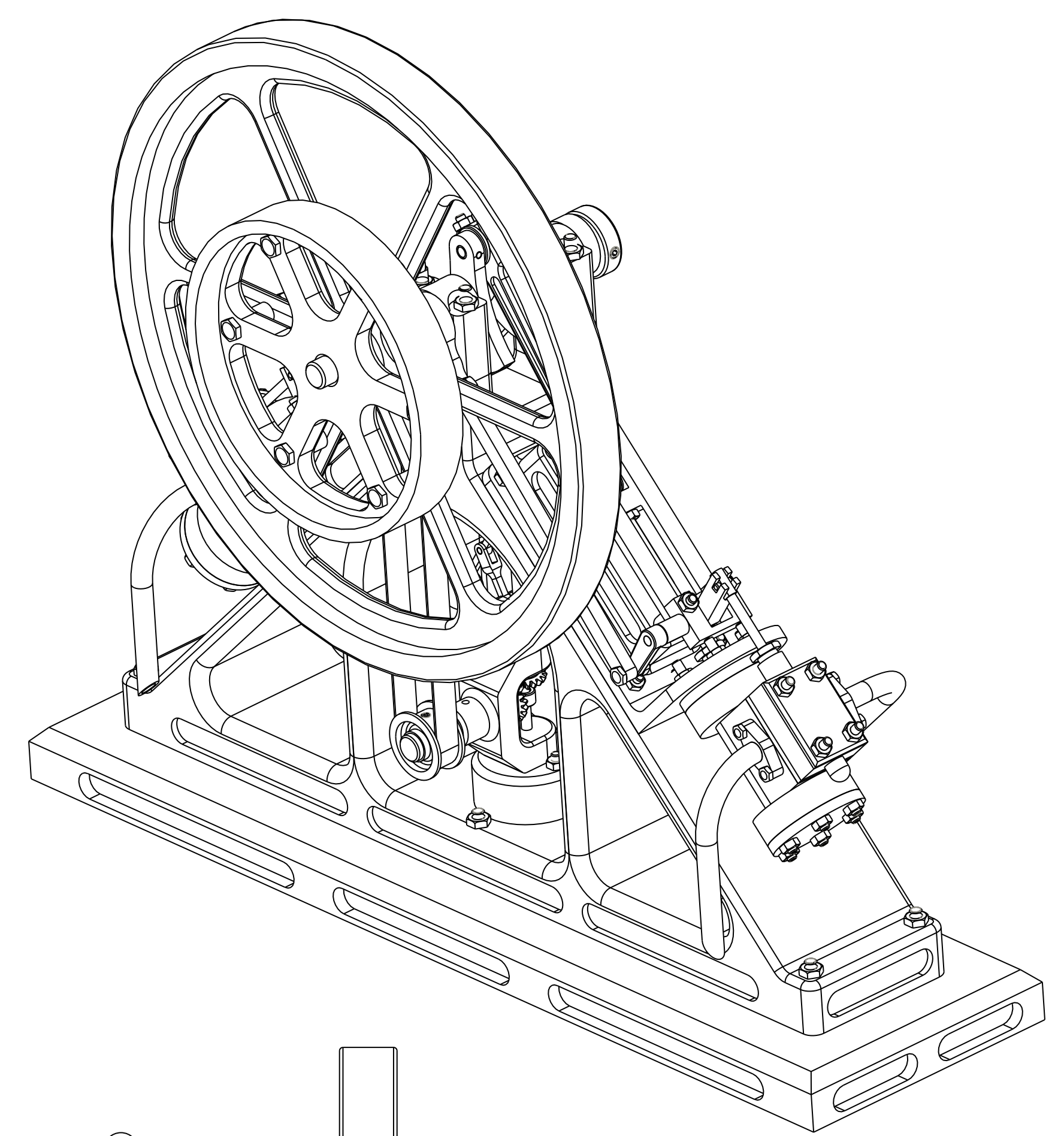
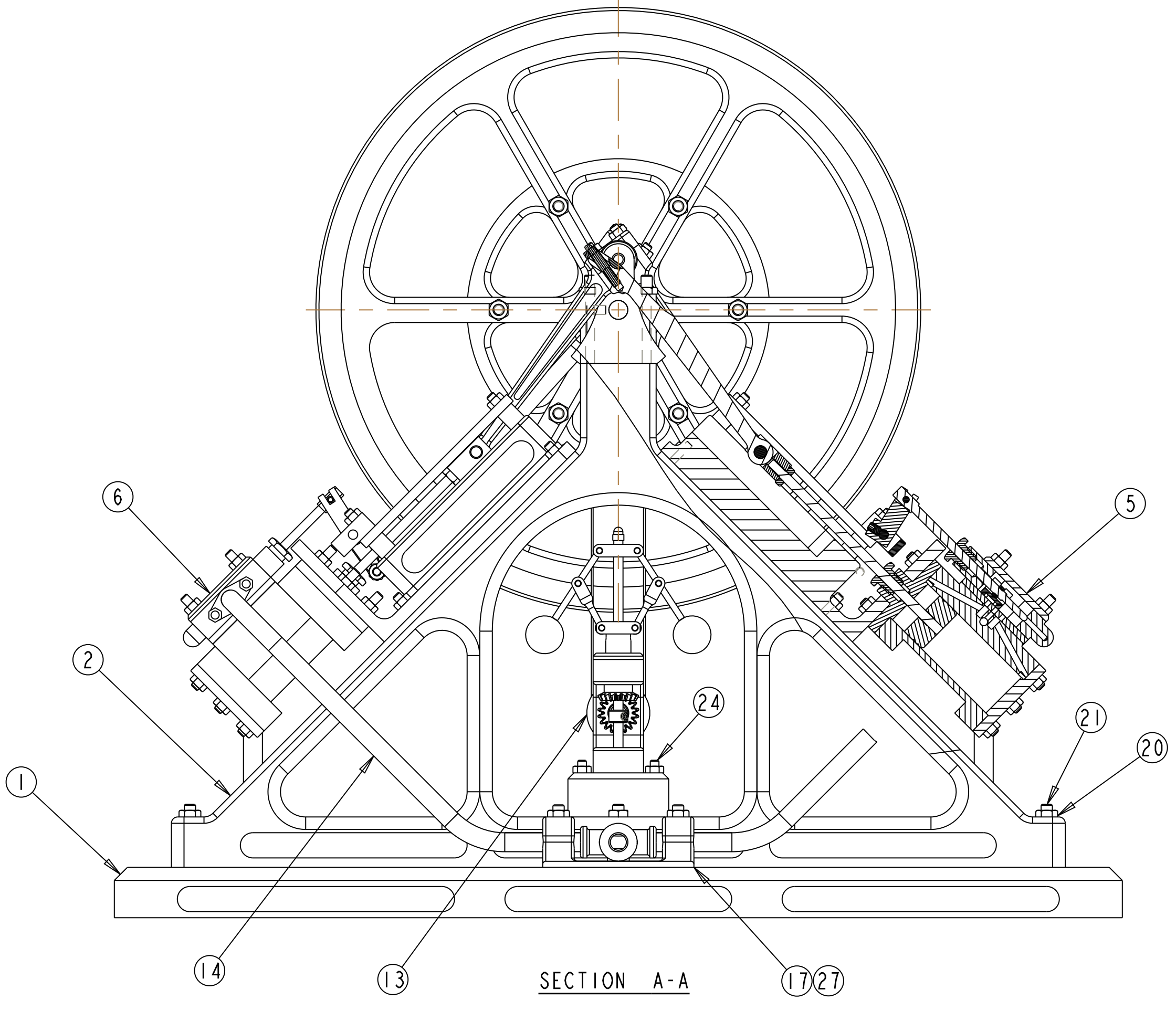
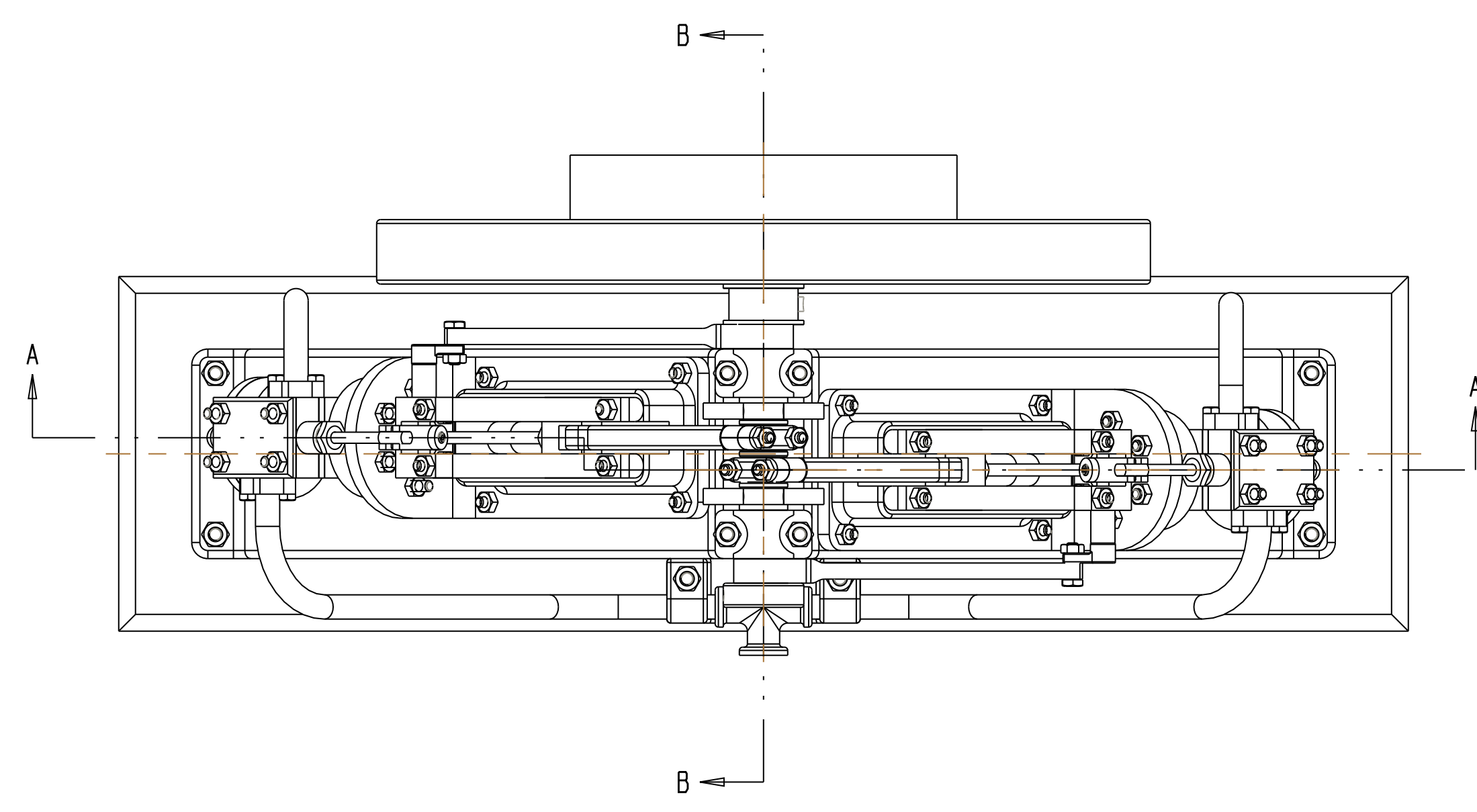
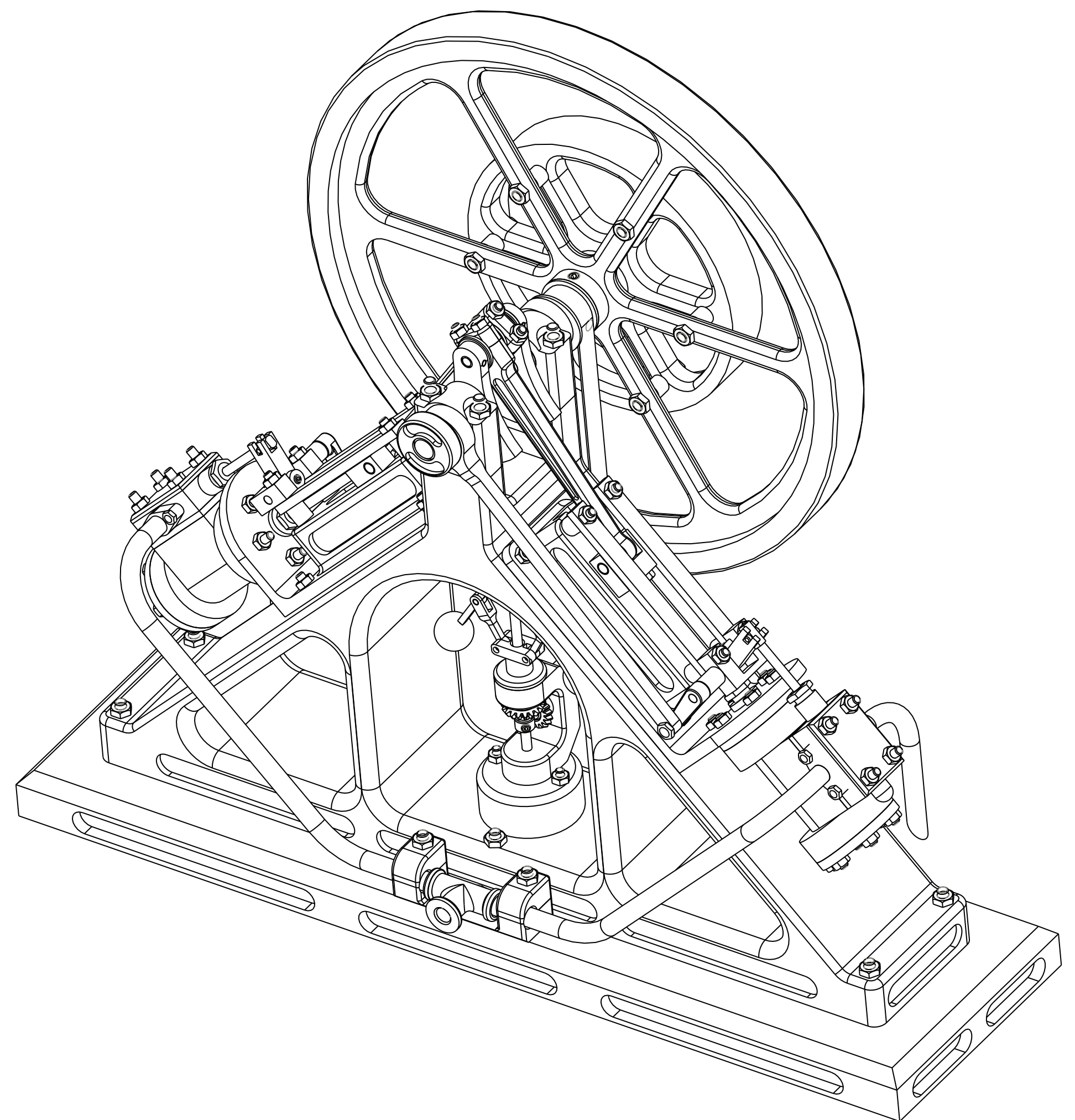


ITEM NO.	DWG. NO.	DESCRIPTION	SIZE	MATERIAL	NOTES	QN'TY
1	002	BASEPLATE		AL.		1
2	003	FRAME, CENTER		AL.		1
3	004	BEARING PEDASTAL		C. R. S.		2
4	004	MAIN BEARING		BRASS/BRNZ.		2
5	005	ENGINE FRAME ASSY. (RH)				1
6	005	ENGINE FRAME ASSY. (LH)				1
7	006	CRANKSHAFT ASSY.				1
8	007	CONN. ROD ASSY.				2
9	008	ECCENTRIC STRAP		BRASS		2
10	008	ECCENTRIC (PULLEY)		C. R. S.		1
11	008	ECCENTRIC (PLAIN)		C. R. S.		1
12	009	FLYWHEEL ASSY.				1
13	010	GOVENOR ASSY.				1
14	011	INLET PIPING ASSY.				1
15	012	EX. PIPING ASSY. RH				1
16	013	EX. PIPING ASSY. LH				1
17	014	PIPE SUPPORT ASSY.				1
18		BELT		STK.		1
19		HEX NUT (SM. PATT.)	#2-56	STK.		10
20		HEX NUT (SM. PATT.)	#4-40	STK.		11
21		STUD	#4-40 X 1 1/8" LG.	STK.		10
22		#2-56 HH SCREW	#2-56 X 1/4" LG.	STK.		8
23		STUD	#2-56 X 1/2" LG.	STK.		8
24		STUD	#2-56 X 7/8" LG.	STK.		2
25		SET SCREW	#4-40 X 3/16" LG.	STK.		1
26		SET SCREW	#4-40 X 1/8" LG.	STK.		1
27		STUD	#4-40 X 5/8" LG.	STK.		1



ELMERS #41 DIAGONAL ENGINE
 (BASED ON ELMER VERBURGS
 #41 FACTORY ENGINE)
 2 CYLINDER DOUBLE ACTING
 1/2" BORE X 1" STROKE

NOTES:
 1. PRIMARY DIMENSIONS SHOWN IN INCHES
 DIMENSIONS SHOWN IN BRACKETS "[]" MM.
 2. THIRD ANGLE PROJECTION SHOWN.

GENERAL TOLERANCES UNLESS NOTED	
.xxx .xx ANGLES	
0.001 0.001 0.50	
DRAWN	DATE
J. McCLELLAND	1-19-2020
CHECKED	DATE
APPROVED	DATE

ELMERS #41 DIAGONAL ENGINE ASSEMBLY	
CUSTOMER:	
CUSTOMER P/N:	
SIZE	DRAWING NAME
E	GENERAL ARRANGEMENT
SCALE AS SHOWN	DWG. NO. 001 SHEET 1 OF 1

REV.	DATE	DESCRIPTION
0	1-19-2020	

THIS DRAWING MAY BE FREELY USED OR MODIFIED FOR ANY NON-PROFIT OR NON-COMMERCIAL USE.
 ALL ACCURACY AND SAFETY ISSUES ARE THE USERS RESPONSIBILITY. THE ORIGINATOR AND THE PROVIDER
 ARE NOT RESPONSIBLE OR LIABLE FOR ANY LOSSES OR DAMAGES INCURRED FROM THE CREATION OR USE OF
 THE PRODUCTS CONTAINED IN THIS DRAWING.