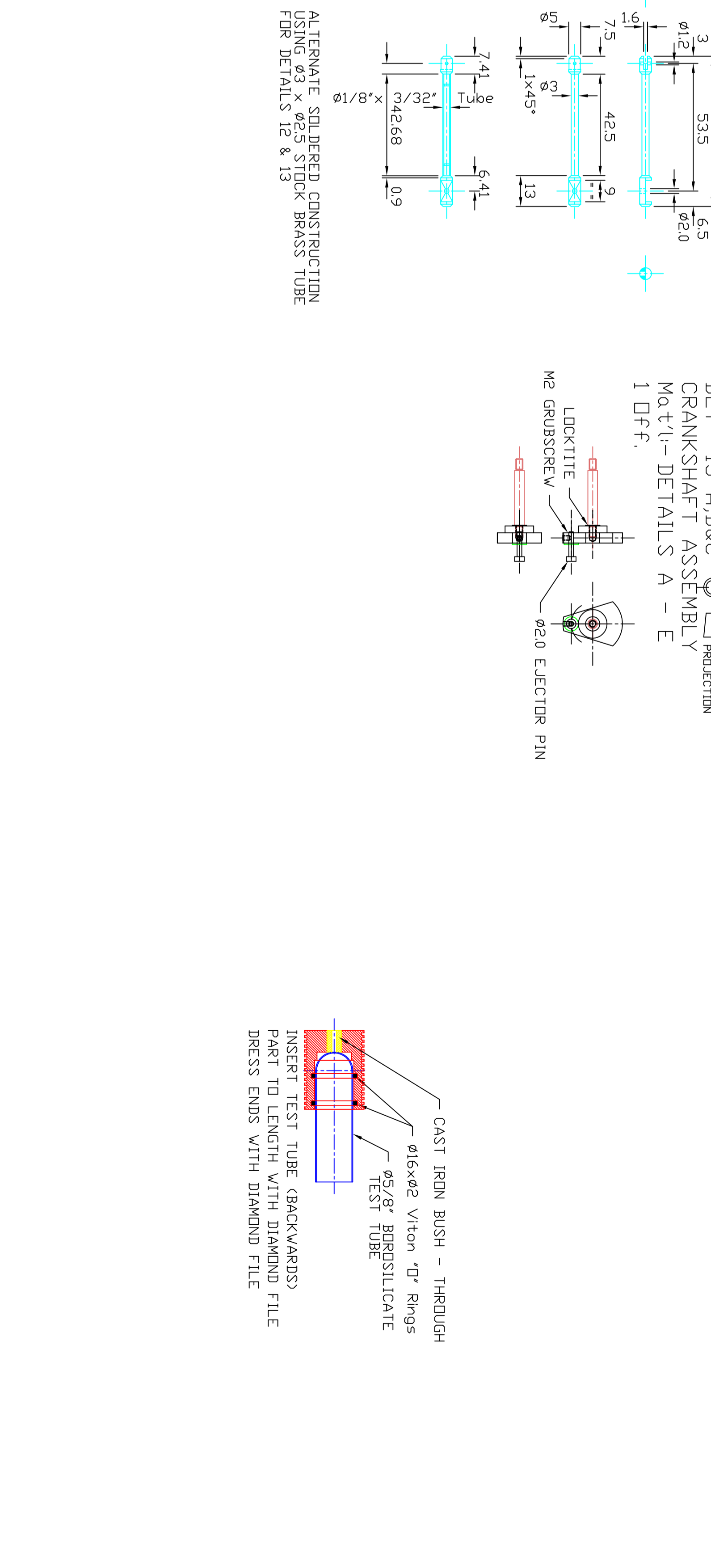
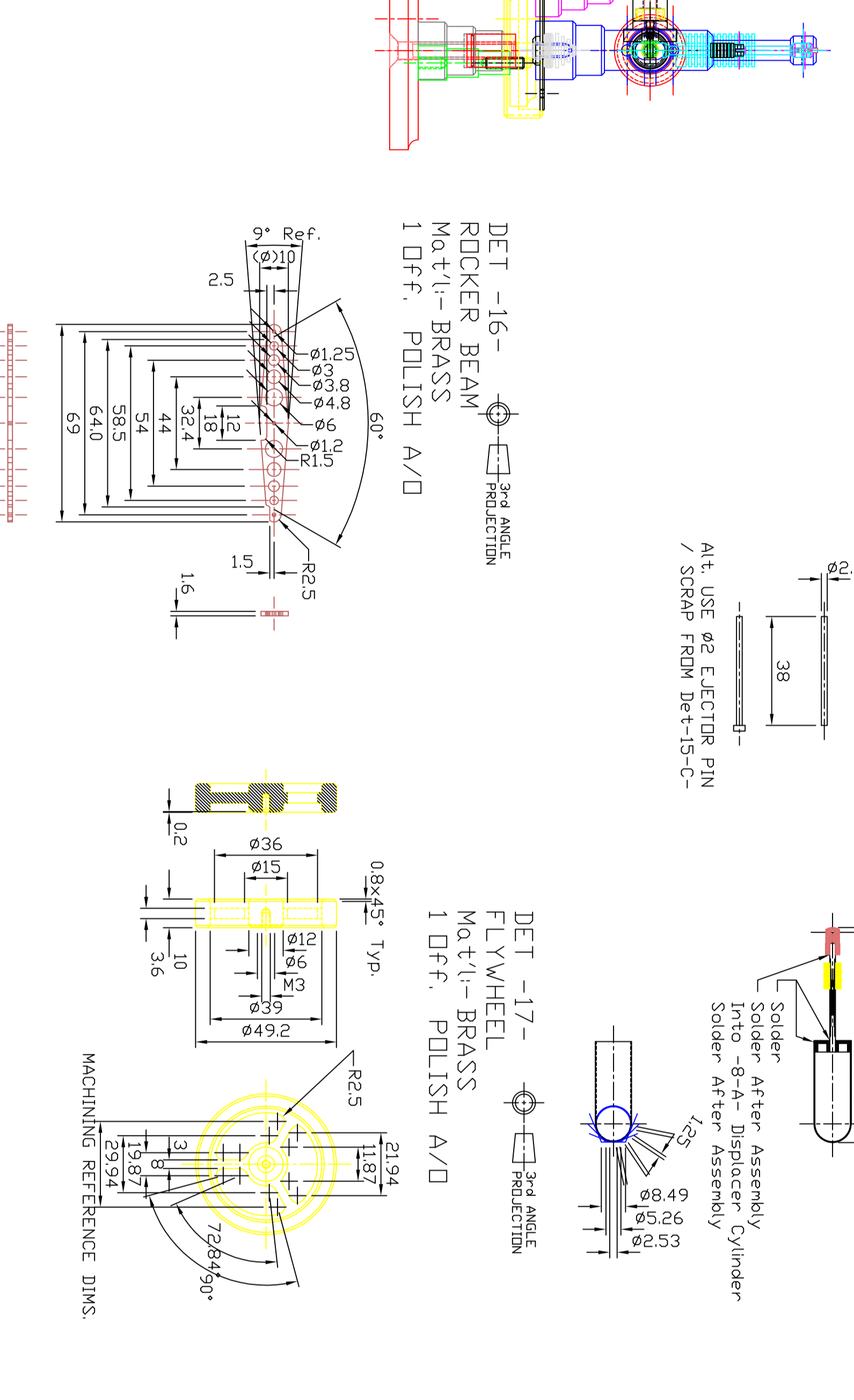
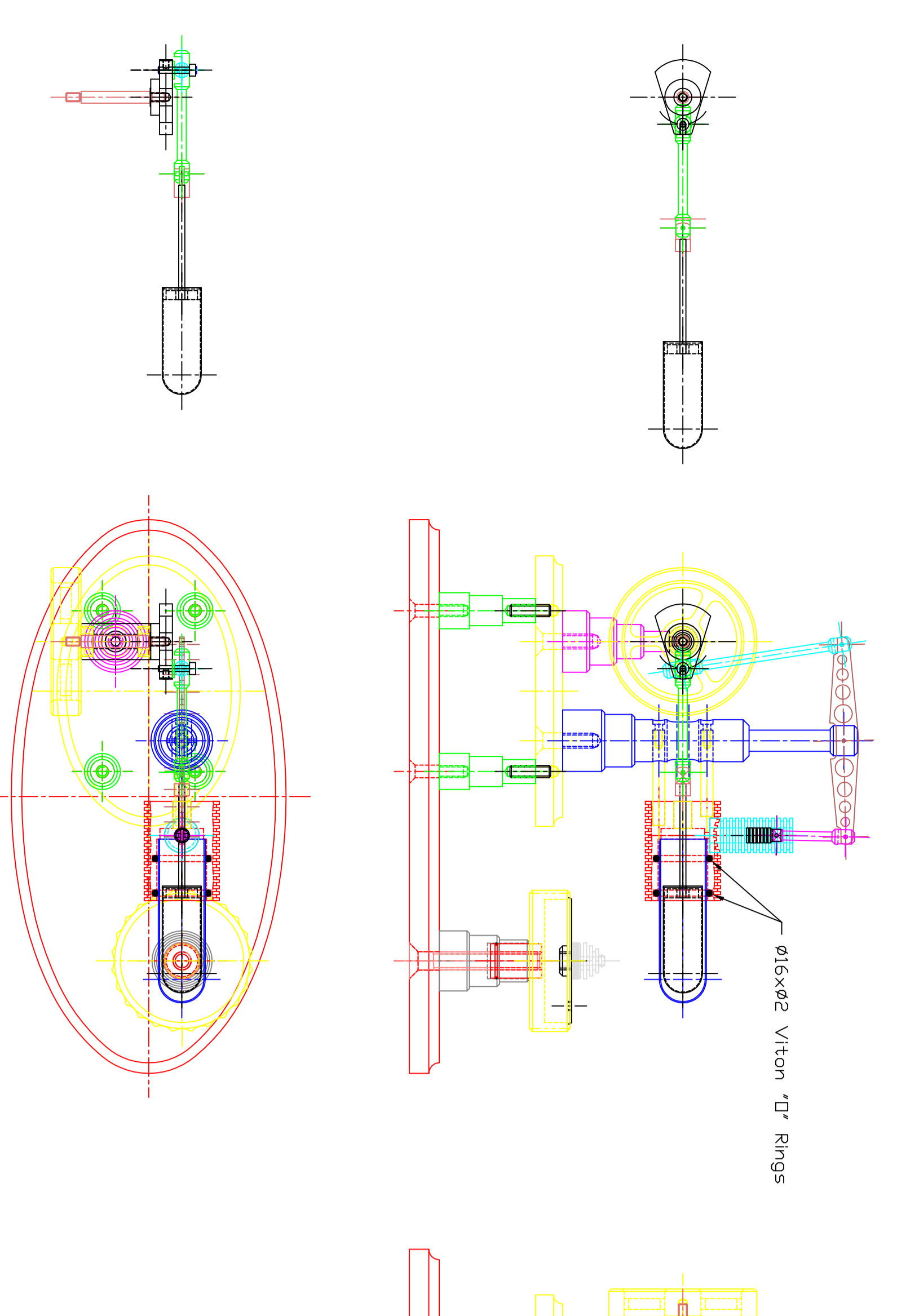


ORIGINAL DESIGN  
J. JONKMAN  
Stirling "60"  
17/10/2012



ALTERNATE: UAE 12 A.F. HEX BAR FOR BEARING HOUSING  
DET -5-A- 3RD ANGLE PRODUCTION AXLE SLEEVE Mat'l:- BRASS 1 DFF. POLISH A/D  
DET -5-B- 3RD ANGLE PRODUCTION AXLE SLEEVE Mat'l:- 12 A.F. Hex Brass 1 DFF. POLISH A/D  
DET -5-A&B- 3RD ANGLE PRODUCTION AXLE STAND ASSEMBLY Mat'l:- BRASS 1 DFF. POLISH A/D

ALTERNATE FOR WICKED BURNER  
USE ALCOHOL FUEL

SUGGESTED METHOD OF MAKING GUDGEON PINS  
USE Ø1.2 MIG WELDING WIRE (STAINLESS ?)  
DEFORM END IN VICE TO SQUARE CROSS SECTION  
USE SQUARE AS INTERFERENCE FIT IN ONE SIDE  
ADD LOCKTITE - IT WILL 'WICK' IN AND SET  
DRESS ENDS AFTER CURING

