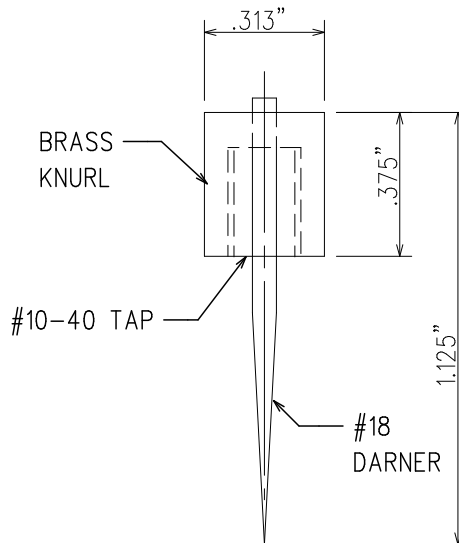
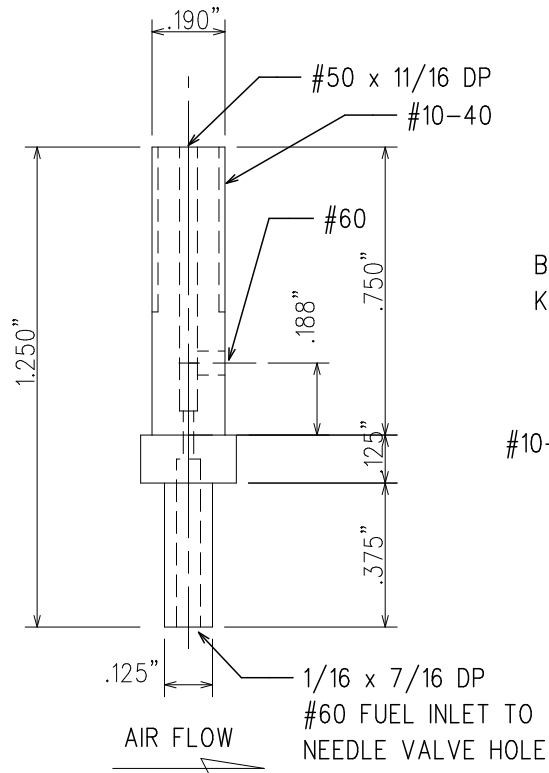
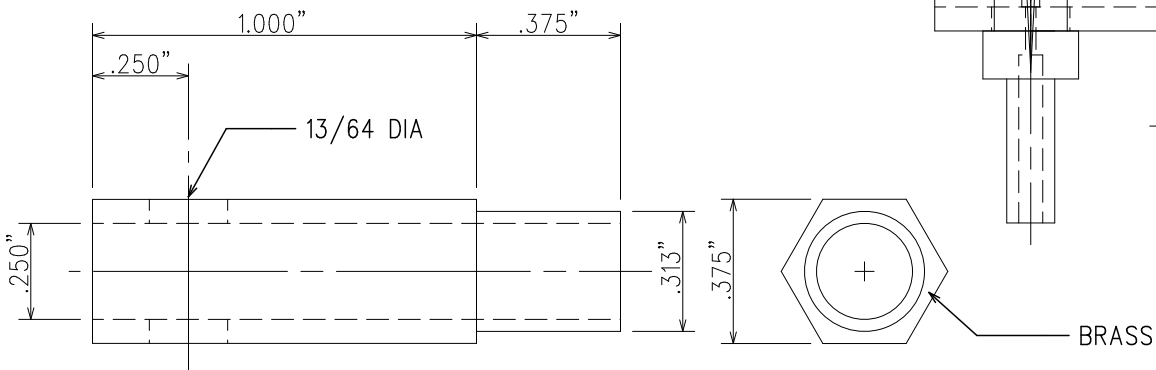


BOTTOM OUT NEEDLE IN SPINDLE.  
 BOTTOM OUT CAP ON SPINDLE  
 BACK OFF CAP TWO TURNS  
 TRIM NEEDLE TO TOP OF CAP  
 SOLDER NEEDLE IN CAP



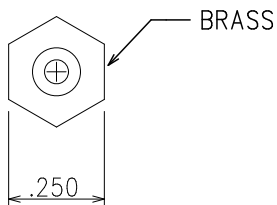
$$\begin{aligned}
 .125 \times .125 \pi &= .04908 \\
 \text{open area} &= .003 \times 2 = .006 \\
 .006 / .04908 &= 12\%
 \end{aligned}$$



$$\begin{aligned}
 .140625 \times .140625 \pi &= .062126 \\
 \text{open area} &= .007 \times 2 = .014 \\
 .014 / .062 &= 22.5\%
 \end{aligned}$$



$$\begin{aligned}
 .15625 \times .15625 \pi &= .07669 \\
 \text{open area} &= .011 \times 2 = .022 \\
 .022 / .07669 &= 28.7\%
 \end{aligned}$$



06/01/2019	2 : 1	A	DUCLOS STYLE CARBURETOR REV 6/18/19
DATE	SCALE		
GAL	1 OF 1		
DRAWN BY	SHEET NO.		
		SIZE	