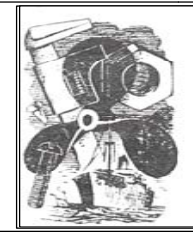


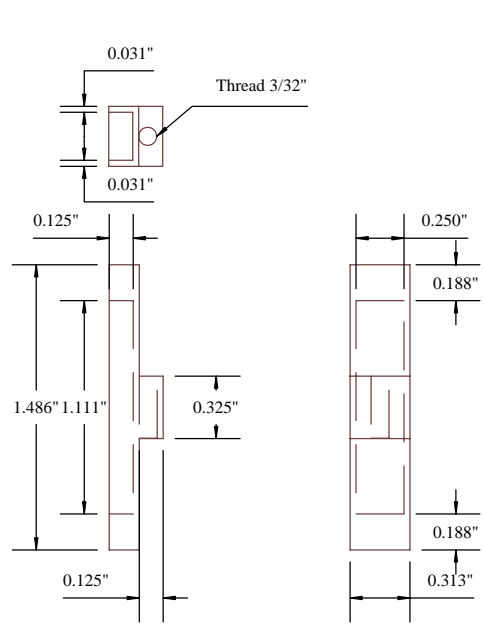
Part: Cylinder
Cylinder Covers
Piston and Valve Rod Gland Followers

Material: Cylinder and covers - Cast Iron
Gland followers - Bronze

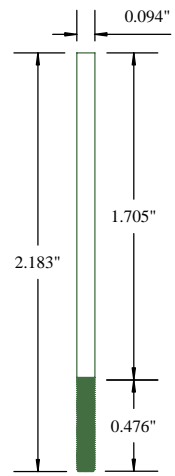


© **BOB HOLME**
Engineering Service and Repair
Mobile: AU 0466 979 291
Int 61+466 979 291
Email: Maryak@homemodelenginemachinist.com

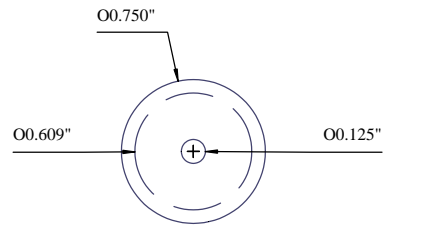
		Title		William Fairbairn 10 hp Steam Engine	
		Scale		1" : 1"	
		Date:			
REV	DATE	DESCRIPTION			



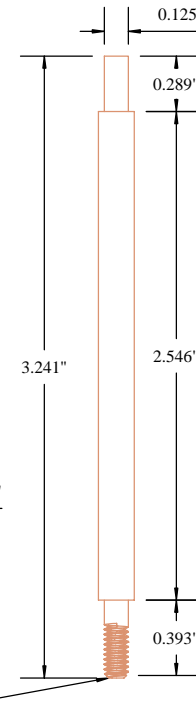
Valve



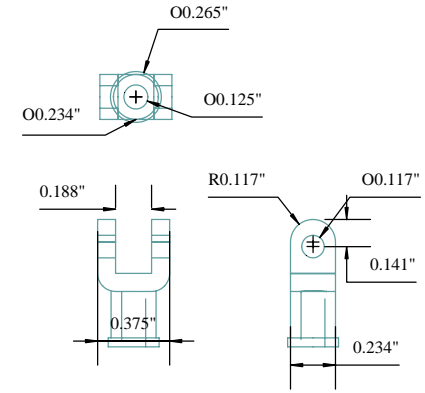
Valve Rod



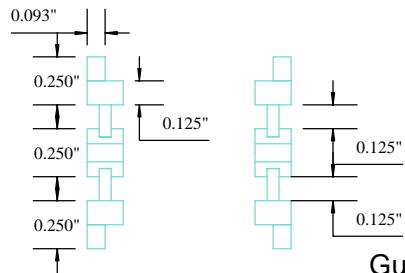
Piston



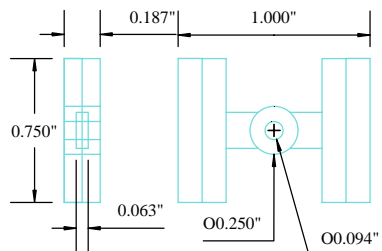
Piston Rod



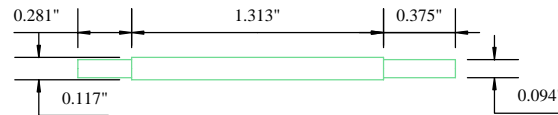
Crosshead



Guides x 2

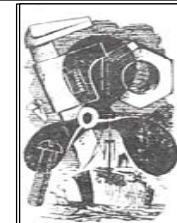


Guide Rod



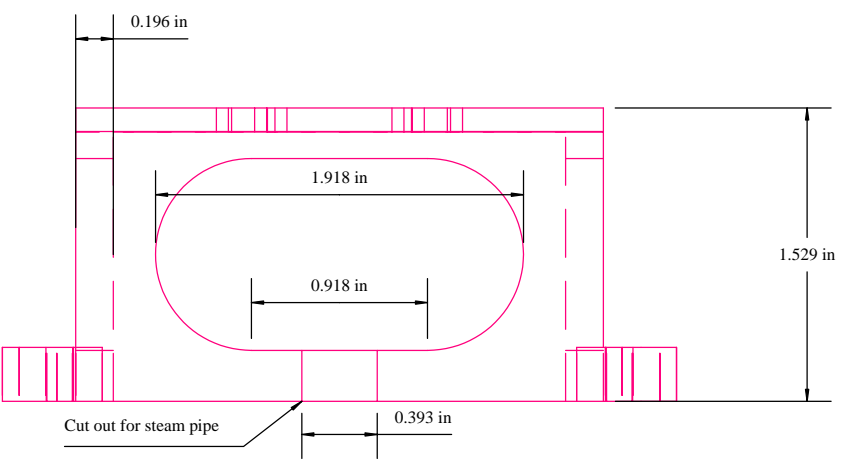
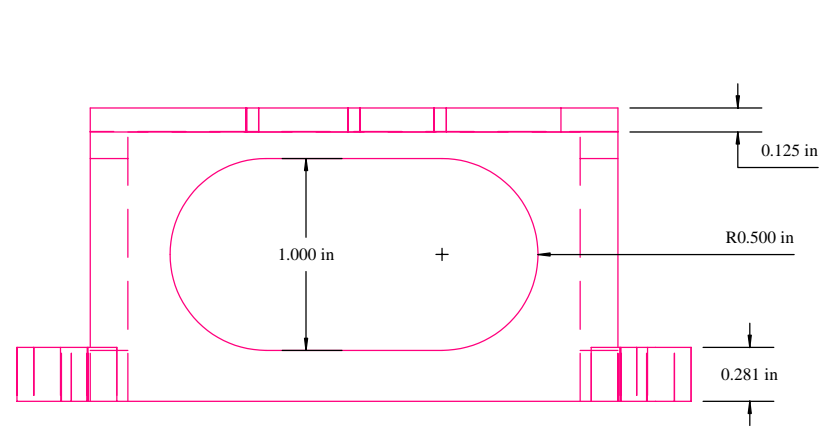
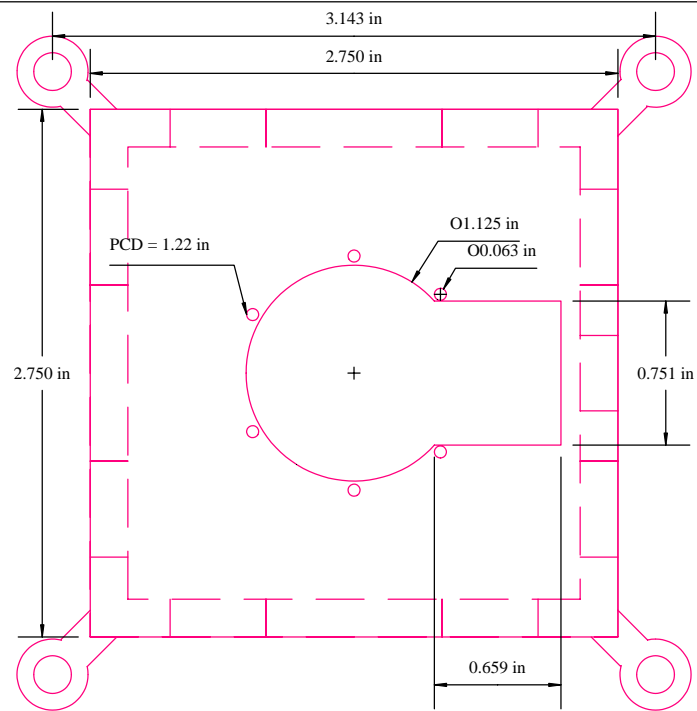
Part: Piston - Valve - Rods - Crosshead - Guides

Material Piston - Cast Iron..... Valve - Bronze
Rods - Steel..... Crosshead Bronze
Guides - Bronze



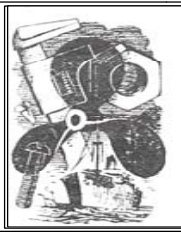
© **BOB HOLME**
Engineering Service and Repair
Mobile: AU 0466 979 291
Int 61+466 979 291
Email: Maryak@homemodelenginemachinist.com

			Title	William Fairbairn 10 hp Steam Engine	
			Scale	Date:	
REV	DATE		DESCRIPTION		



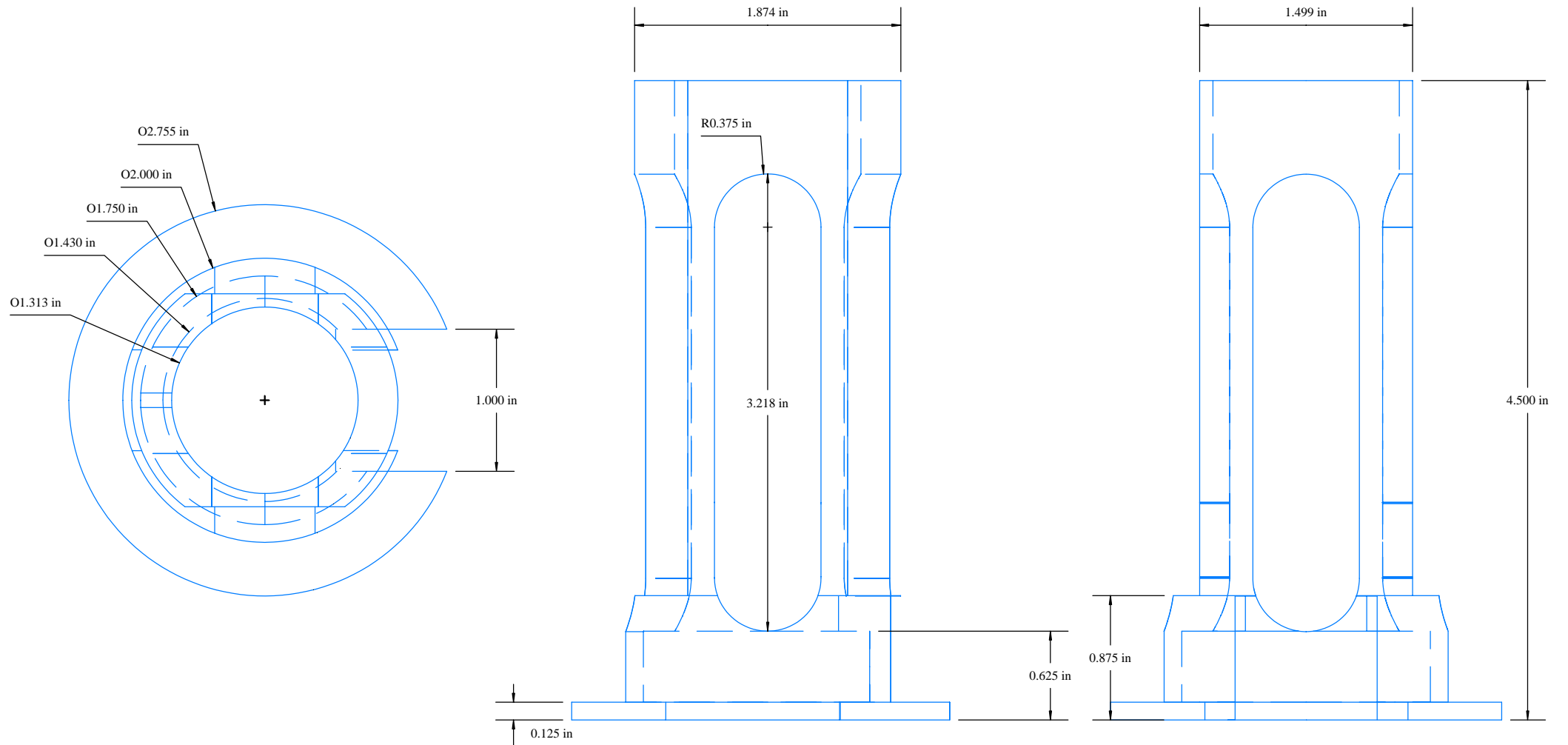
Part: **Engine Base**

Material: **Mild Steel**



© **BOB HOLME**
 Engineering Service and Repair
 Mobile: AU 0466 979 291
 Int 61+466 979 291
 Email: Maryak@homemodelenginemachinist.com

			Title	William Fairbairn 10 hp Steam Engine	
			Scale	1" : 1"	Date:
REV	DATE	DESCRIPTION			



Part: **Guide Column**

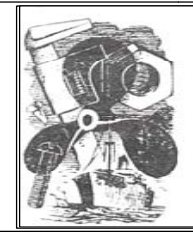
Material: **Mild Steel**

REV	DATE	DESCRIPTION

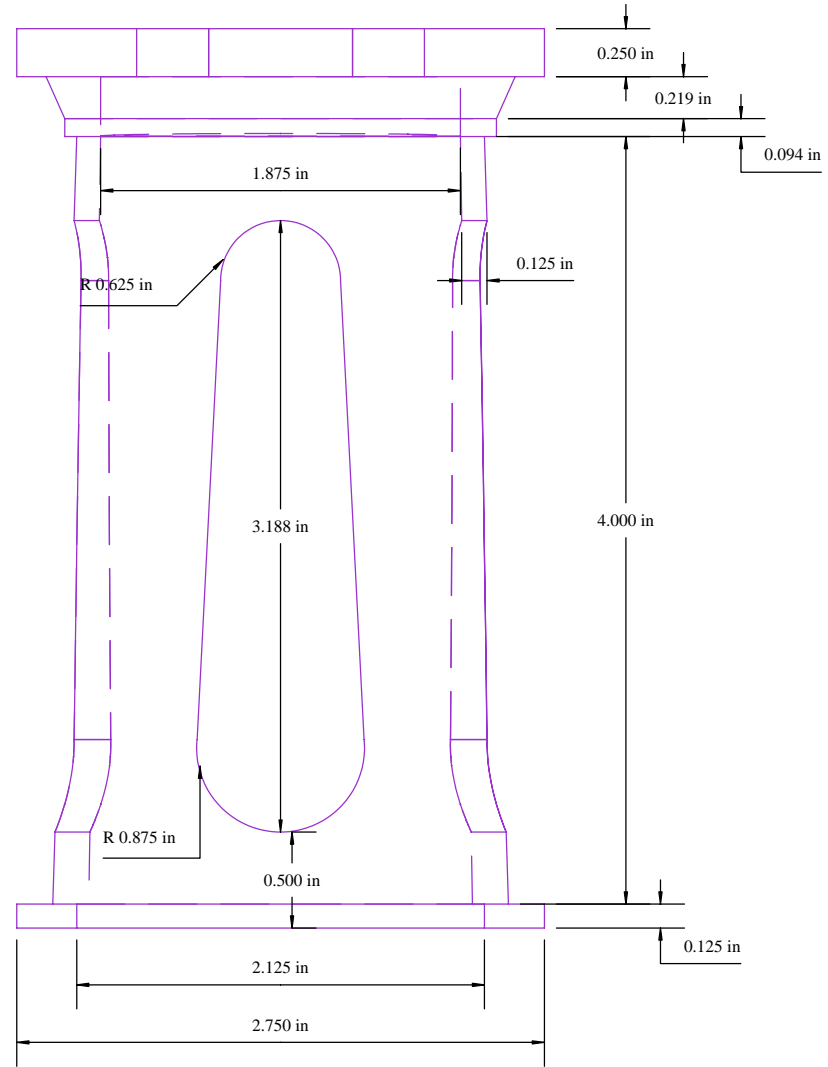
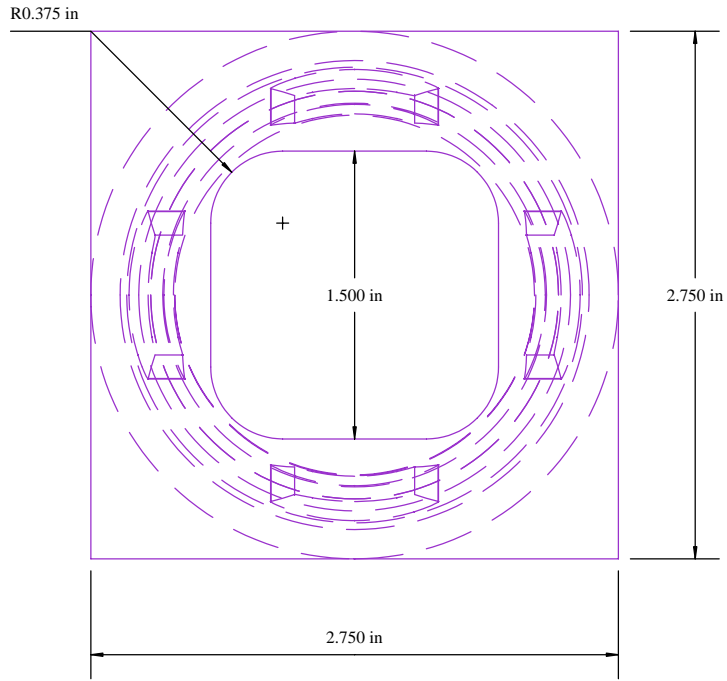
Title: **William Fairbairn 10 hp Steam Engine**

Scale: **1" : 1"**

Date: _____

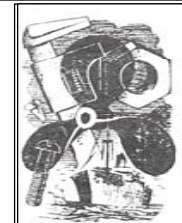


© **BOB HOLME**
 Engineering Service and Repair
 Mobile: AU 0466 979 291
 Int 61+466 979 291
 Email: Maryak@homemodelenginemachinist.com



Part: Doric Column

Material: Aluminium



© **BOB HOLME**
 Engineering Service and Repair
 Mobile: AU 0466 979 291
 Int 61+466 979 291
 Email: Maryak@homemodelenginemachinist.com

REV	DATE	DESCRIPTION

Title: William Fairbairn 10 hp Steam Engine
 Scale: 1" : 1"
 Date: