

D

C

B

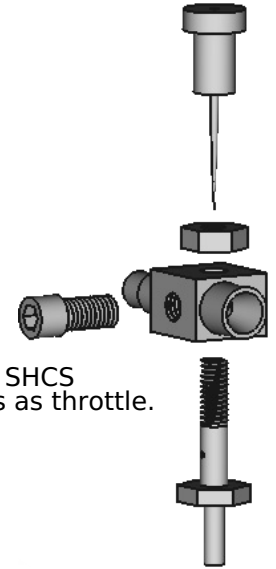
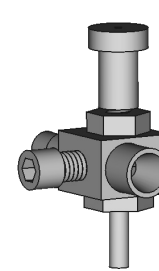
A

Body

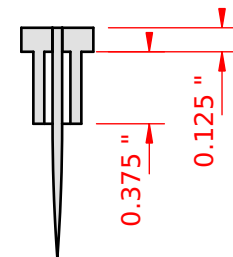
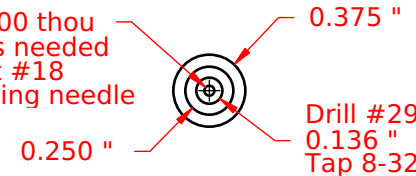
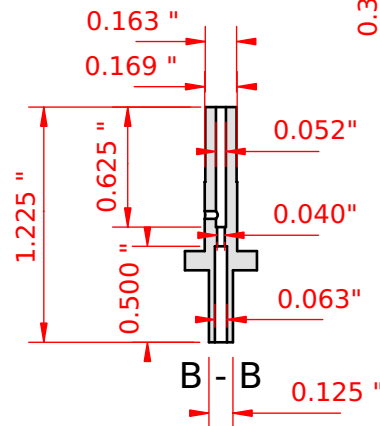
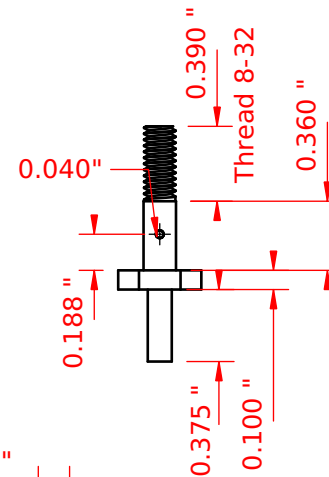
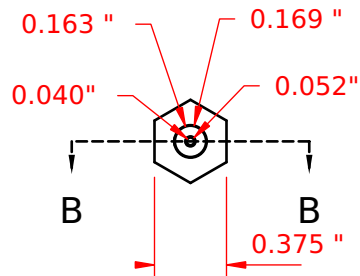
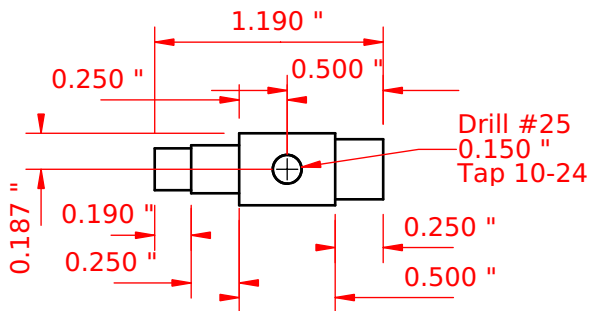
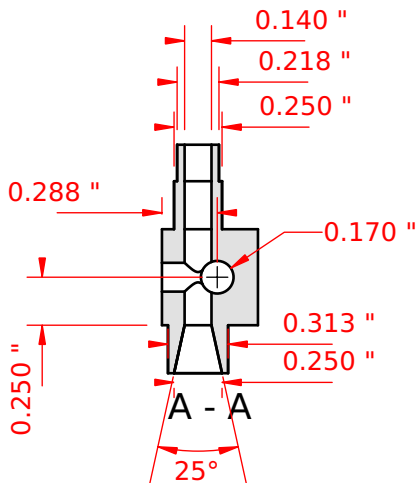
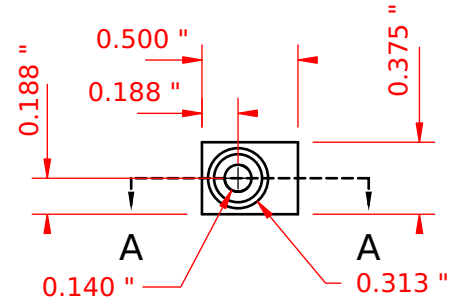
aluminum / mild steel

Carburetor

based on a Chuck Fellows design

10-24 SHCS
serves as throttle.**Jet**

brass / mild steel

Needlebrass / mild steel
#18 darning needle52.000 thou
or as needed
to fit #18
darning needleDrill #29
0.136 "
Tap 8-32Assembly: screw
needle cap onto
jet approximately
1/4". Insert #18
darning needle
until it seats in
.040" hole. Cut
needle to length
and solder / weld.

Designed by

Andrew H. Wakefield

Scale

1:1

Default Dim.

+/- .001"

Title

Steel Webster

Sheet

14

Revision

3.5

Date

3/15/2020

D

C

B

A