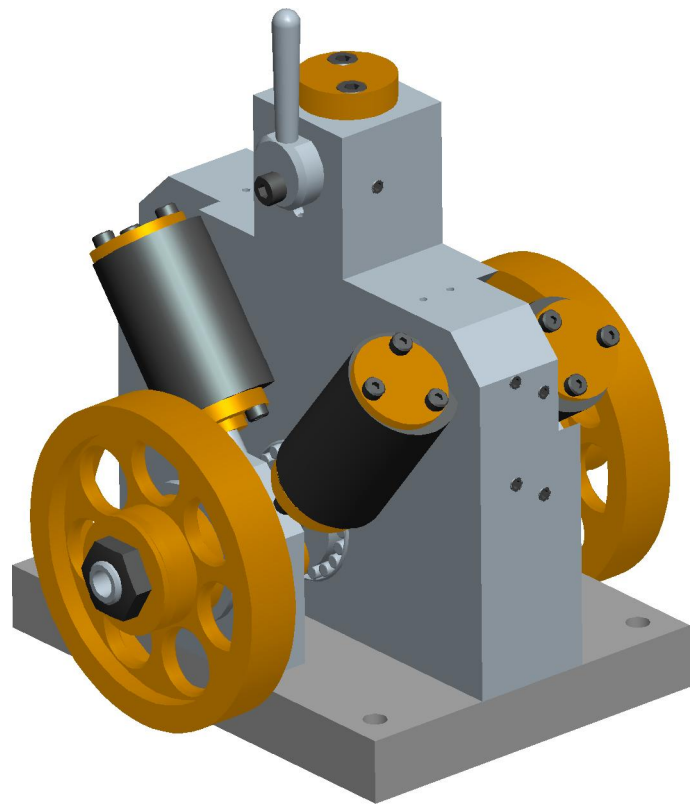


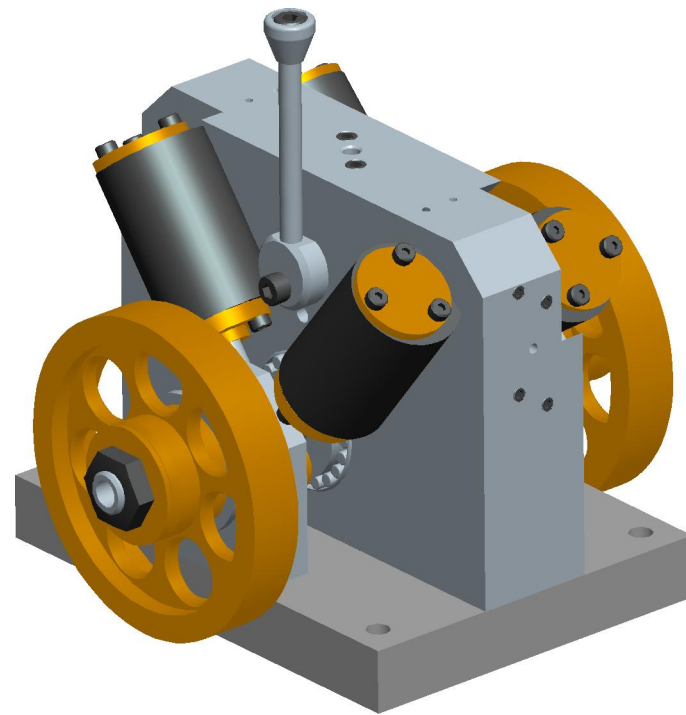
ITEM NO.	DET. NO.	DESCRIPTION	MATERIAL	SIZE	NOTES	QN'TY
		V4 ENGINE ASSY.				
1	1	MANIFOLD BLOCK	C.R.S.			1
2	2	BASE PLATE	HT AL.			1
3	3	BEARING SUPPORT	H.T. AL.			2
4	4	CYLINDER	CAST IRON			4
5	5	ROD GLAND	BRASS			4
6	6	CYL. HEAD	BRASS			4
7	7	FLYWHEEL	BRASS			2
8	8	PISTON	CAST IRON			4
9	9	PISTON ROD	SILVER STEEL			4
10	10	BIG END BEARING	BRASS			4

THIS DRAWING MAY BE FREELY USED OR MODIFIED FOR ANY NON-PROFIT OR NON-COMMERCIAL USE. ALL ACCURACY AND SAFETY ISSUES ARE THE USERS RESPONSIBILITY. THE ORIGINATOR AND THE PROVIDER ARE NOT RESPONSIBLE OR LIABLE FOR ANY LOSSES OR DAMAGES INCURRED FROM THE CREATION OR USE OF THE PRODUCTS CONTAINED IN THIS DRAWING.

ITEM NO.	DET. NO.	DESCRIPTION	MATERIAL	SIZE	NOTES	QN'TY
		V4 ENGINE ASSY.				
11	11	ATTR. TRUNNION	SILVER STEEL			4
12	12	RARE EARTH MAGNET	NEODEY./IRON/BORON			2
13	13	CRANK CENTER BOSS	SILVER STEEL			1
14	14	CRANK OUTBOARD END	SILVER STEEL			2
15	15	BIG END PIN	SILVER STEEL			2
16	16	CRANK RETAINER PLATE	MILD STEEL			2
17	17	MAIN BEARING	IKO TLA2012Z			4
18	18	S.H.C.S.	STK.	M2 X 6 LG.		28
19	19	THROTTLE/REVERSE VALVE	H.T. AL.		ORIGINAL	1
20	20	VALVE STEM	GROUND BAR			2
21	21	THROTTLE LEVER	MILD STEEL			1
22	22	LEVER BOSS	MILD STEEL			2
23	23	STEM WASHER	MILD STEEL			2
24	24	BANJO BOLT	BLK OR SS S.H.C.S.	M3 X 35 LG.		2
25	25	INLET BOSS	BRASS		ORIGINAL	1
26		F.H.C.S	STK. (SS)	M3 X 6 LG.		2
27	1	BUSHING	BRONZE			2
28	1	MANIFOLD BLOCK (ORIG.)	C.R.S.		ORIGINAL	1
29	5	GLAND COVER	BRASS			4
30	5	O-RING	VITON	1X4		4
31	18	S.H.C.S.	STK.	M3 X 8 LG.		2
32	18	S.H.C.S.	STK.	M3 X 45 LG.		3
33	18	S.H.C.S.	STK.	M4X15		8
34	21	THROTTLE LEVER (ALT.)	MILD STEEL			1
35		HEX NUT	STK.	M5X14 HT.		2
36		SET SCREW	STK.	M3 X 4		10
37		SET SCREW	STK.	M4 X 6		2



VERSION "1"
ORIGINAL CONFIGURATION
EXTERNAL FORWARD/REVERSE VALVING
(SEE SHEET #3)



VERSION "2"
MODIFIED CONFIGURATION
INTERNAL FORWARD/REV. VALVING
(SEE SHEET #2)

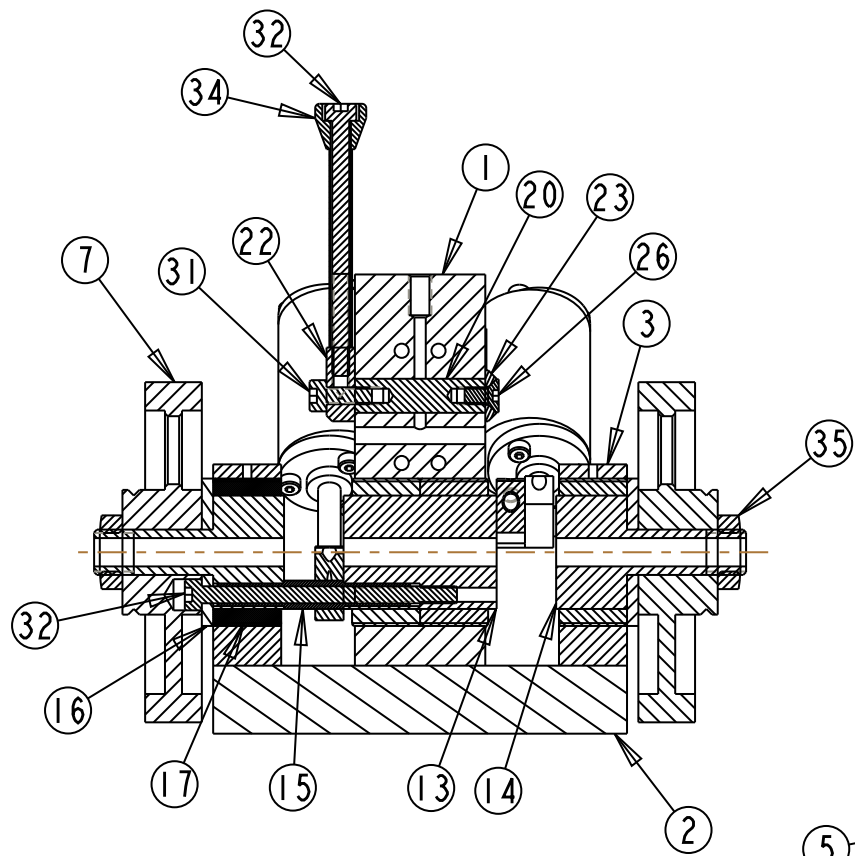


4 CYLINDER V4 DOUBLE ACTING
STEAM/AIR ENGINE
10MM BORE
15MM STROKE

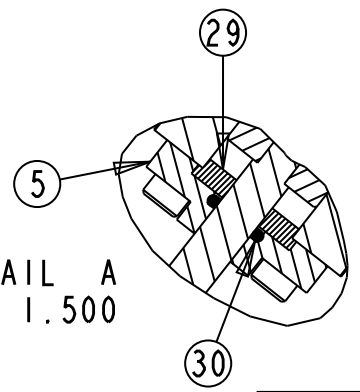
SEE "V4 WOBBLE" DRAWING FOR
PART DETAILS/ADDITIONAL NOTES

REV.	DATE	DESCRIPTION
0		

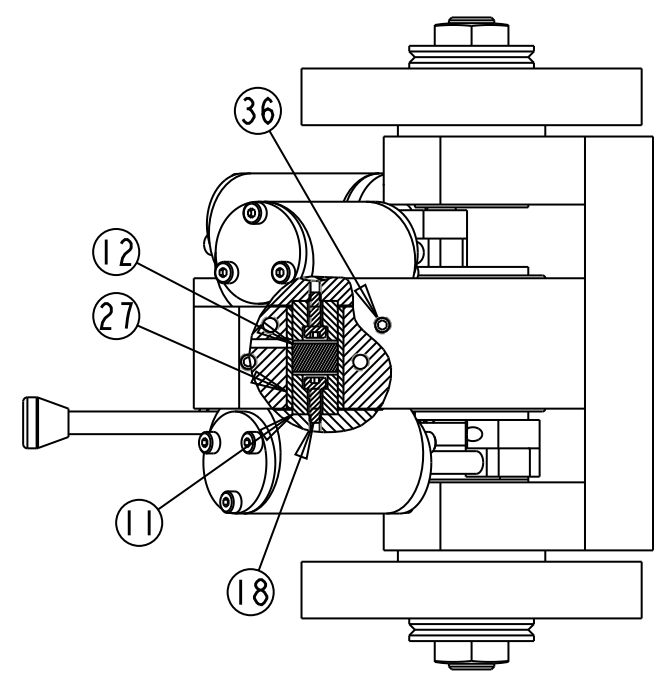
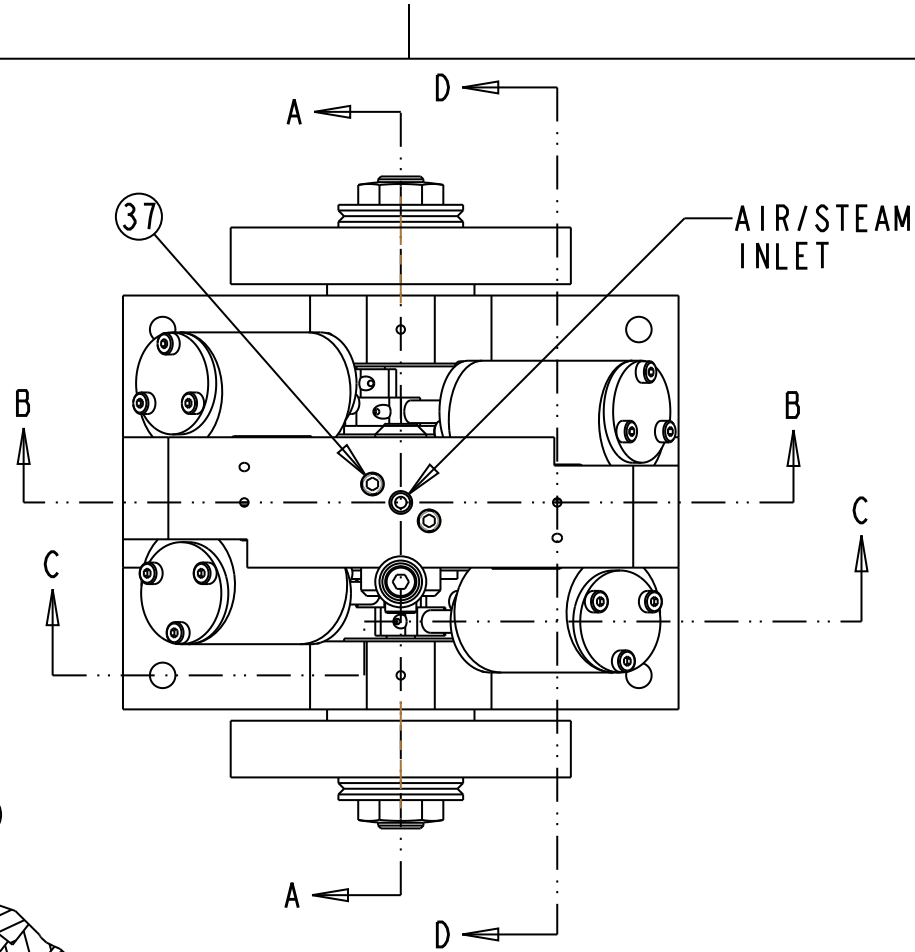
GENERAL TOLERANCES UNLESS NOTED				KEN I'S MAGNETICALLY			
.XXX .XX ANGLES				"SPRUNG" V4 STEAM/AIR ENGINE			
DRAWN:		JCM	DATE	12-8-20	SIZE	DRAWING NAME	
CHECKED:			DATE		B	V4 ENGINE ASSY.	
				SCALE:	AS SHOWN	DWG. NO.:	SHEET 1 OF 3



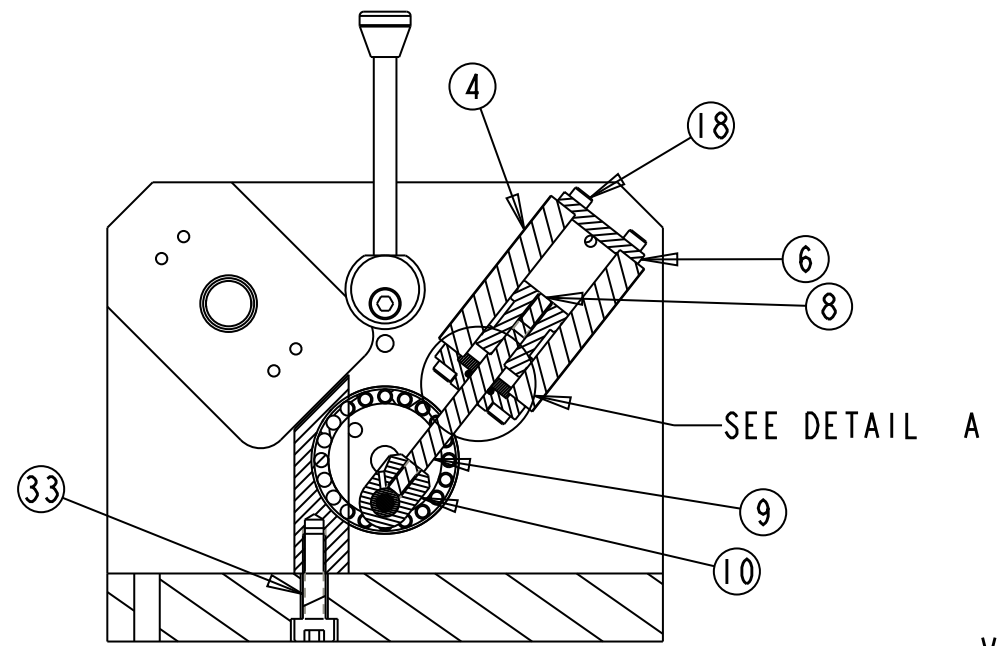
SECTION A-A



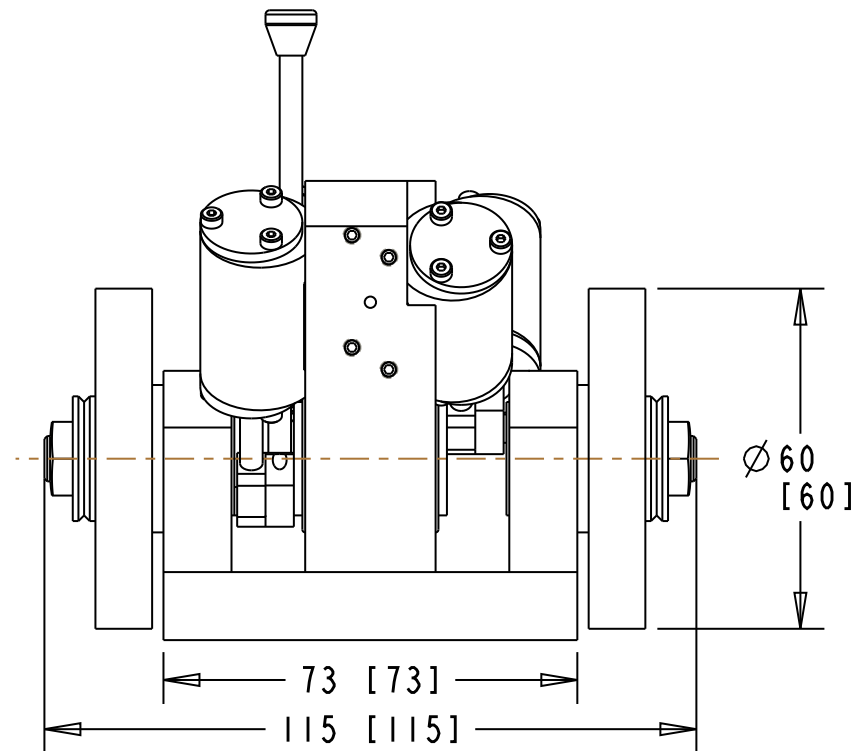
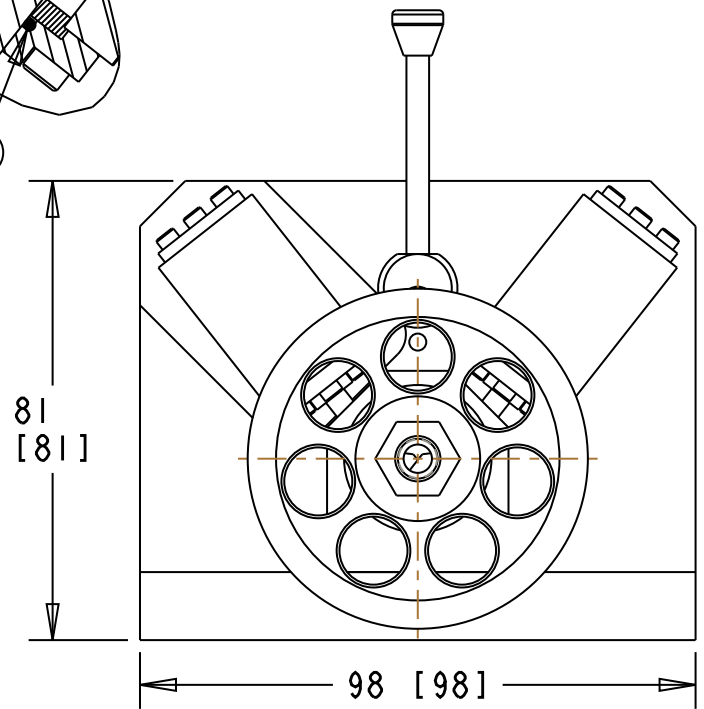
DETAIL A
SCALE 1.500



SECTION D-D



SECTION C-C



VERSION "2"
MODIFIED CONFIGURATION
SCALE 0.750



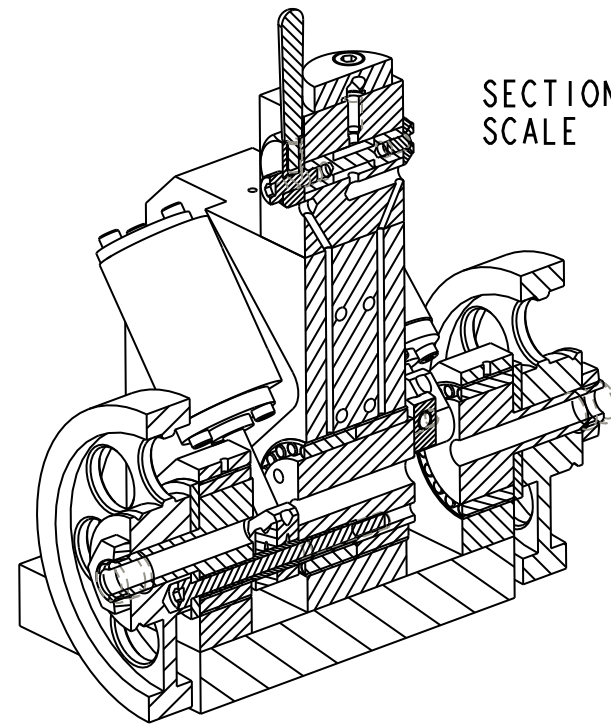
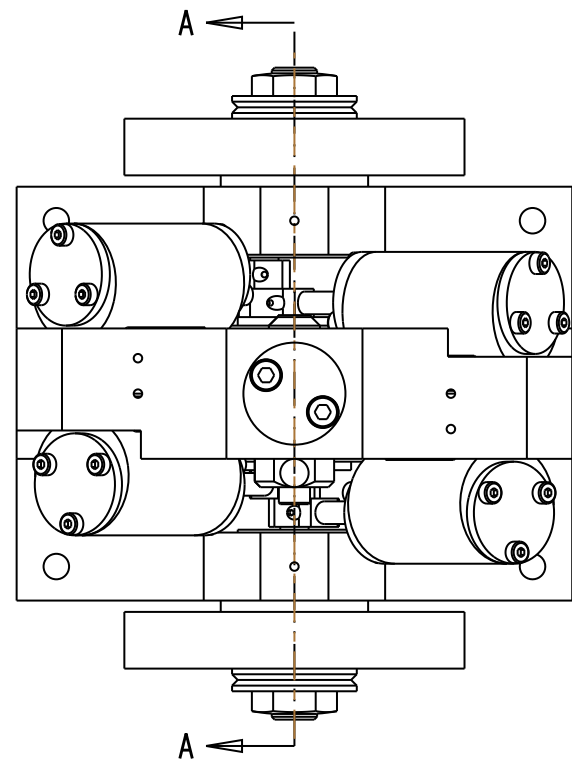
GENERAL TOLERANCES UNLESS NOTED
.XXX .XX ANGLES

**KEN I's MAGNETICALLY
"SPRUNG" V4 STEAM/AIR ENGINE**

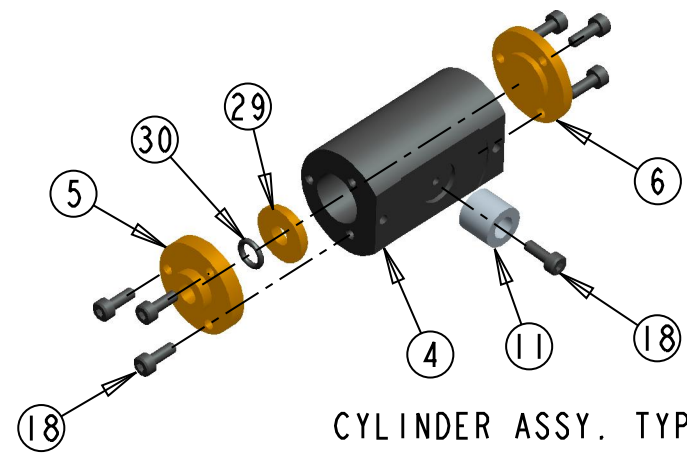
REV.	DATE	DESCRIPTION
0		

DRAWN:	JCM	DATE	12-8-20
CHECKED:		DATE	

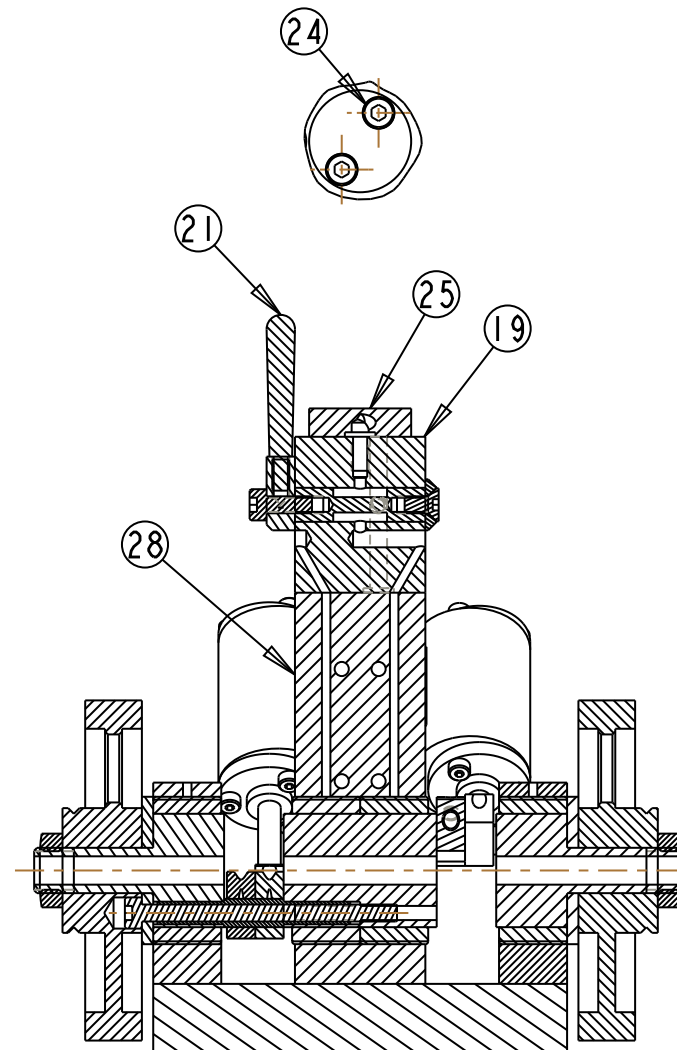
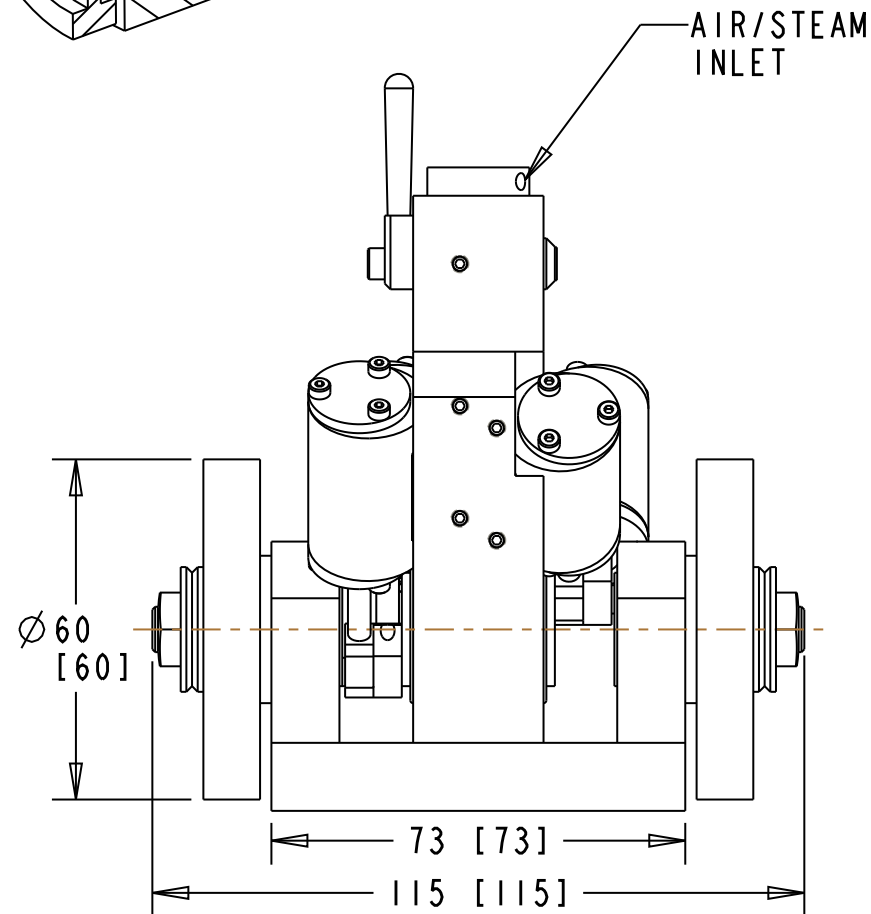
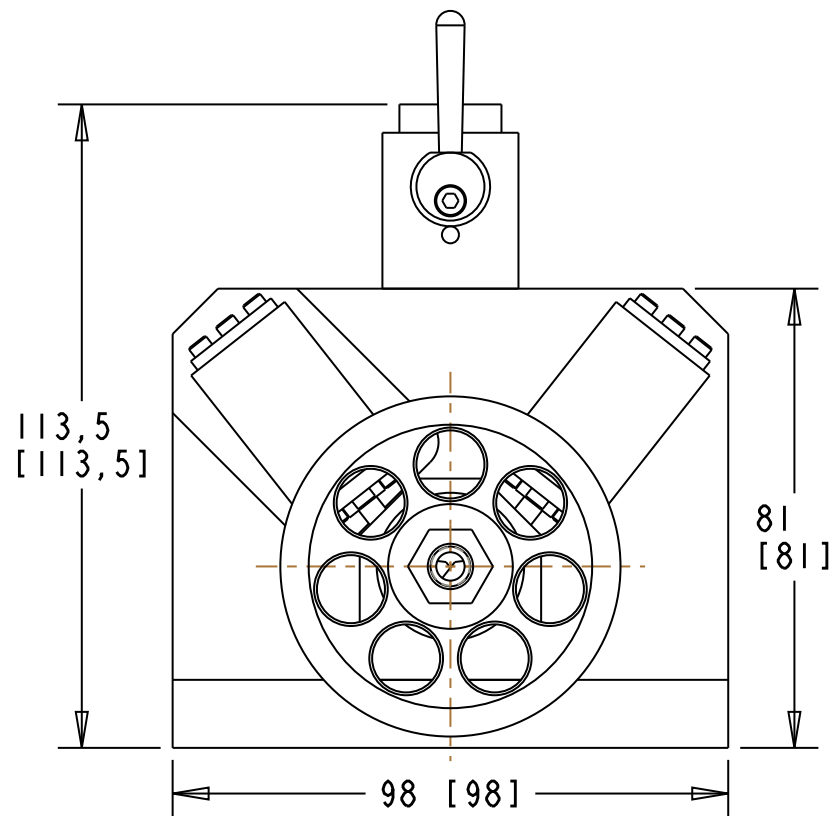
SIZE	DRAWING NAME		
B	V4 ENGINE ASSY.		
SCALE: AS SHOWN	DWG. NO.:	SHEET	2 OF 3



SECTION A-A
SCALE 0.750



CYLINDER ASSY. TYP.



SECTION A-A

VERSION "1"
ORIGINAL CONFIGURATION
SCALE 0.750



REV.	DATE	DESCRIPTION
0		

GENERAL TOLERANCES UNLESS NOTED .XXX .XX ANGLES				KEN I's MAGNETICALLY "SPRUNG" V4 STEAM/AIR ENGINE			
DRAWN: JCM		DATE 12-8-20		SIZE B	DRAWING NAME V4 ENGINE ASSY.		
CHECKED:		DATE		SCALE: AS SHOWN	DWG. NO.:	SHEET	3 OF 3