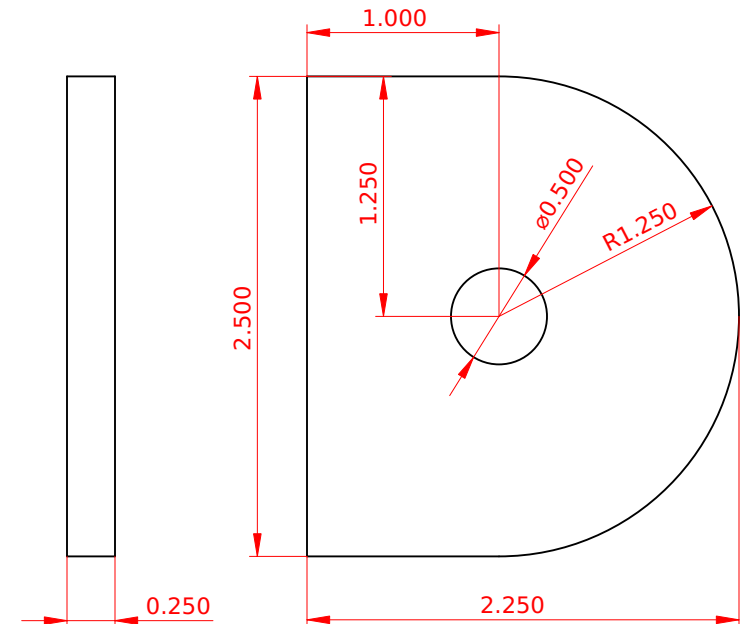
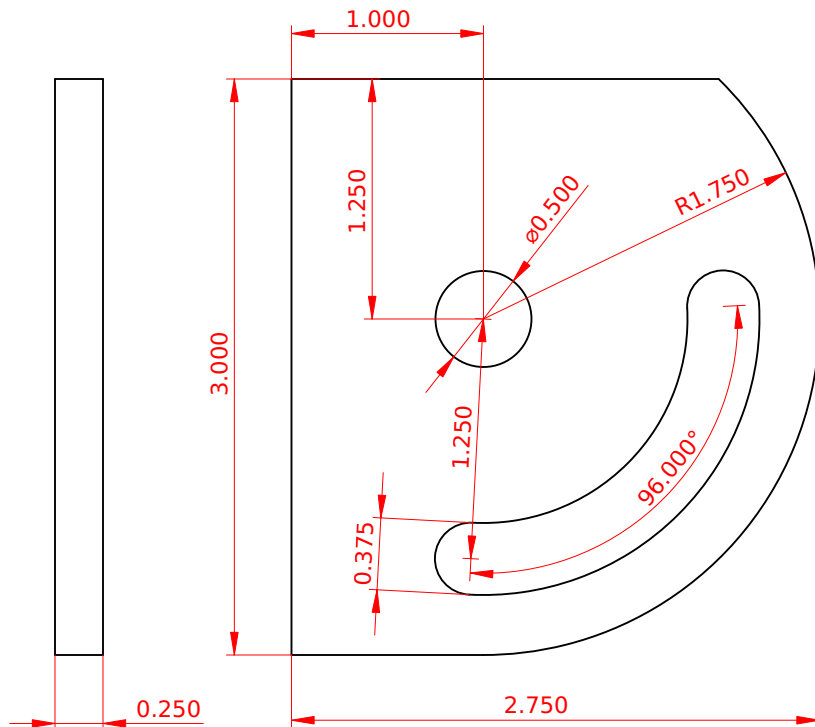
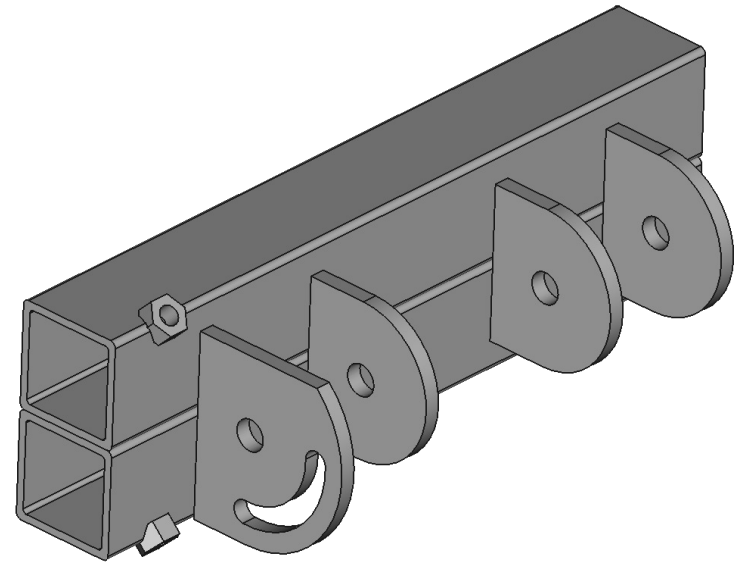


Pivot and Lock Plates

.25" mild steel plate
(1 piece lock plate)
(3 pieces pivot plate)

Assembly:

Lock/pivot plates should be welded to the main tube assembly with the .5" pivot hole on the center line of the assembly. The plates should be attached in pairs, with each pair spaced to fit around the support pillars of the base plus a bit of clearance. Spacing from one pairs to the next is arbitrary, but room should be left for accessing tool arm locks and for assembly using bolt(s) or all-thread rod. As shown, the pairs are spaced to accommodate 2" square support pillars and the distance from the front of the first pair to the rear of the second pair is 8".



Copyright 2021 by Andrew H. Wakefield
Released under Creative Commons 4.0 BY-SA



Designed by Andrew H. Wakefield	Scale 1:1	Default Dim. +/- .005"	Title Belt Grinder	Sheet 2	Revision 1	Date 6/8/2021
------------------------------------	--------------	---------------------------	------------------------------	------------	---------------	------------------