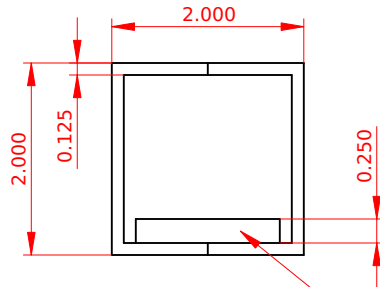
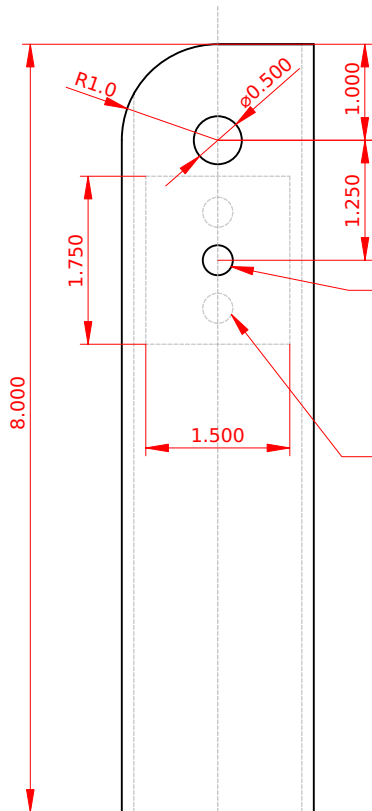


Support Pillars

2 x 2 x .125" mild steel tubing (2 pieces)



1/4" thick backer plate added (using plug welds) to increase threading length for 3/8-16 locking bolt.

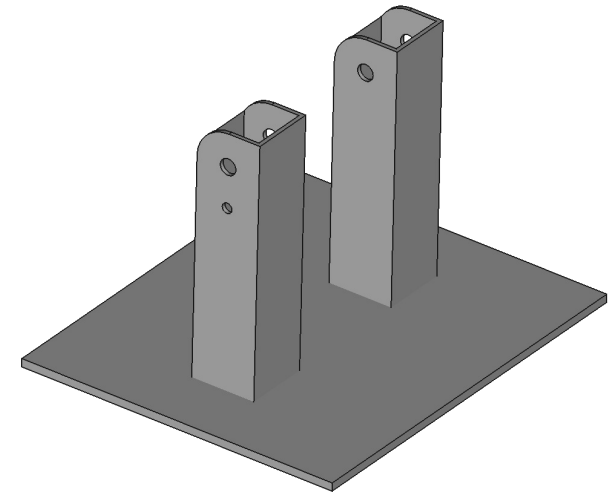


Drill 5/16" through tube wall and backer plate. Tap 3/8-16 through both. (One face of front support tube only.)

Drill 5/16" holes through tube wall and chamfer for plug welds to backer plate. (2 places, approx. 1" apart)

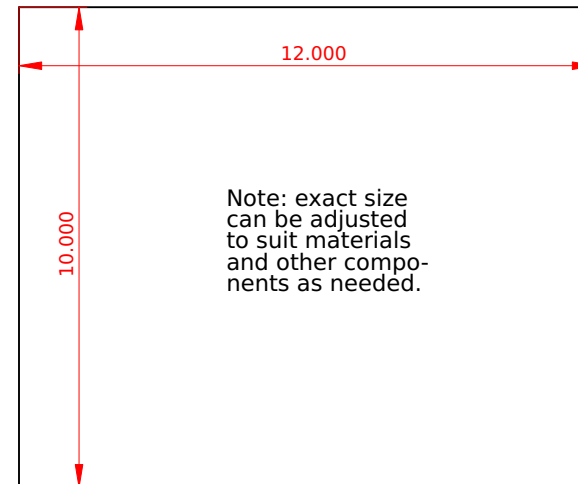
Assembly:

Support pillars must line up so that the .5" pivot points are in line. Other than that, exact spacing of the pillars or placement on the base can be adjusted as desired. Of course, the spacing must match spacing of the pivot/lock plates attached to the main tubing. As built and shown here, the support pillars are spaced 3.5" apart and are centered on the base.

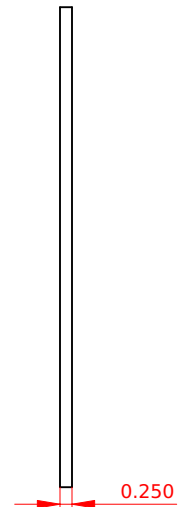


Base

1/4" thick mild steel



Note: exact size can be adjusted to suit materials and other components as needed.



Copyright 2021 by Andrew H. Wakefield
Released under Creative Commons 4.0 BY-SA



Designed by
Andrew H. Wakefield

Scale
1:2,1:4

Default Dim.
+/- .005"

Title
Belt Grinder

Sheet
3

Revision
1

Date
6/11/2021