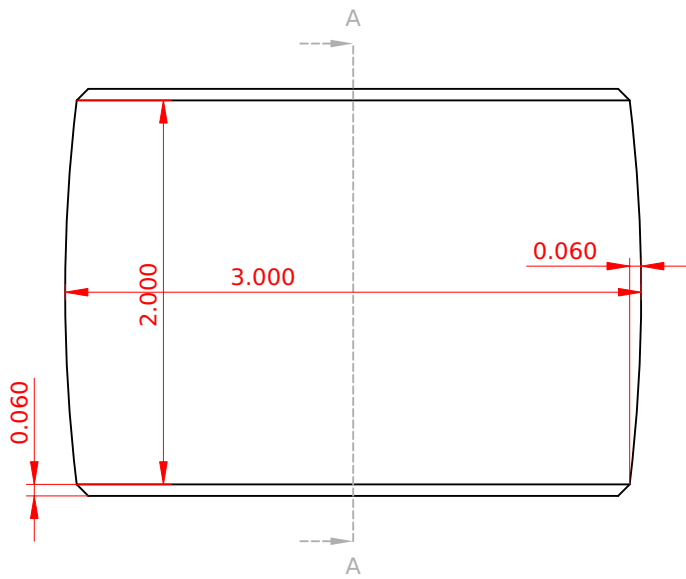
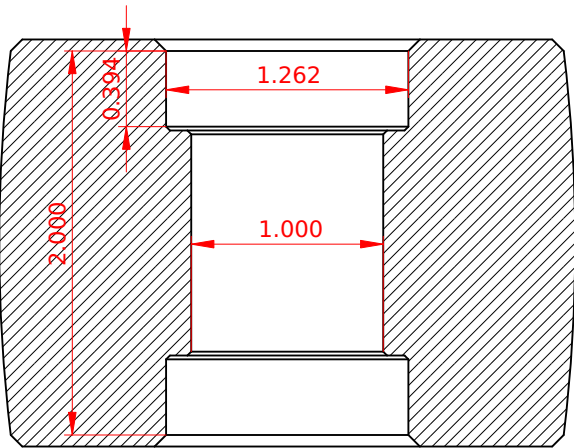


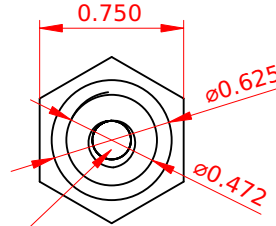
Tracking Wheel

aluminum or mild steel

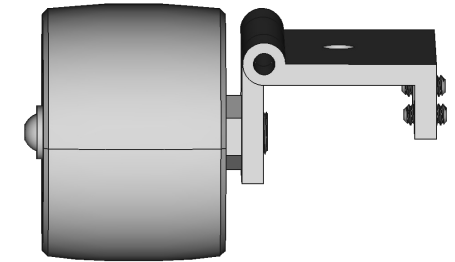
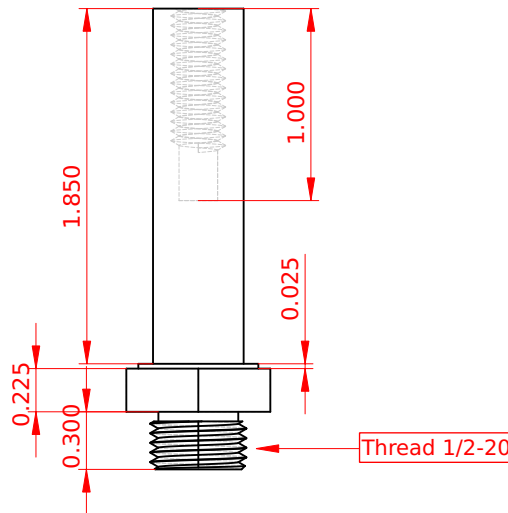


Tracking Spindle

mild steel

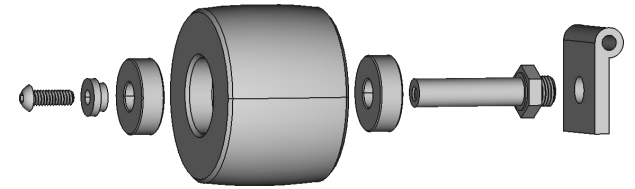


Drill .201"
(1" deep)
Tap 1/4-20
(.75" deep)



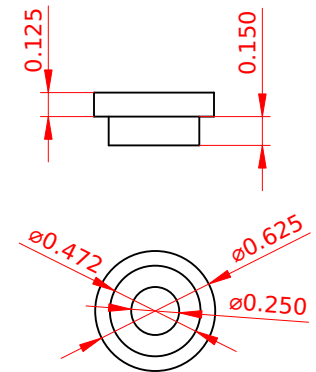
Assembly:

Tighten spindle into tensioner pivot plate.
Assemble wheel on spindle using 6201 bearings.
Adjust fit of spindle cap as needed for smooth
operation with no excess play. Fasten cap
in place with 1/4-20 button head screw.



Spindle Cap

mild steel



Copyright 2021 by Andrew H. Wakefield
Released under Creative Commons 4.0 BY-SA



Designed by
Andrew H. Wakefield

Scale
1:1

Default Dim.
+/- .001"

Title
Belt Grinder

Sheet
8

Revision
1

Date
6/24/2021