

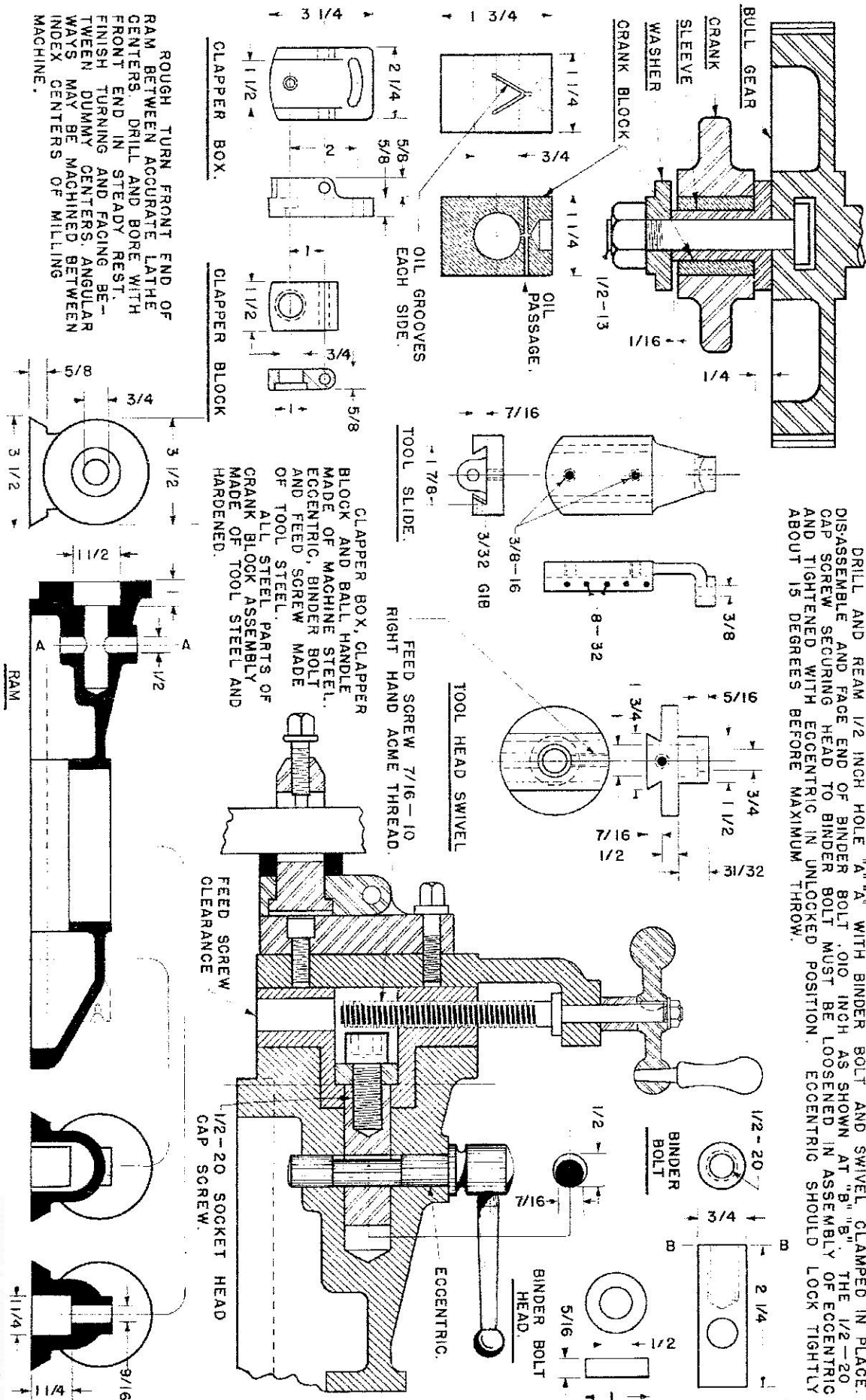
THE POSTALUICK CORPORATION
STRATFORD, CONN.

SIX INCH STROKE BENCH CRANK SHAPER.

DRG. 6-S

FOUR SHEETS.
SHEET FOUR

DISASSEMBLE AND REAM 1/2 INCH HOLE "A" WITH BINDER BOLT AND SWIVEL CLAMPED IN PLACE. CAP SCREW SECURING HEAD OF BINDER BOLT MUST BE LOOSENED IN ASSEMBLY OF ECCENTRIC AND TIGHTENED WITH ECCENTRIC IN UNLOCKED POSITION. ECCENTRIC SHOULD LOCK TIGHTLY ABOUT 15 DEGREES BEFORE MAXIMUM THROW.



ROUGH TURN FRONT END OF RAM BETWEEN ACCURATE LATHE CENTERS. DRILL AND BORE WITH FRONT END IN STEADY REST. FINISH TURNING AND FACING BETWEEN DUMMY CENTERS. ANGULAR WAYS MAY BE MACHINED BETWEEN INDEX CENTERS OF MILLING MACHINE.

CLAPPER BOX, CLAPPER BLOCK AND BALL HANDLE MADE OF MACHINE STEEL. ECCENTRIC, BINDER BOLT AND FEED SCREW MADE OF TOOL STEEL. ALL STEEL PARTS OF CRANK BLOCK ASSEMBLY MADE OF TOOL STEEL AND HARDENED.

FEED SCREW 7/16-10 RIGHT HAND ACME THREAD.

FEED SCREW CLEARANCE 1/2-20 SOCKET HEAD CAP SCREW.