

Part: Assembly Plan and Elevation

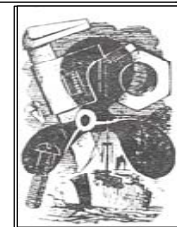
Material

REV	DATE	DESCRIPTION

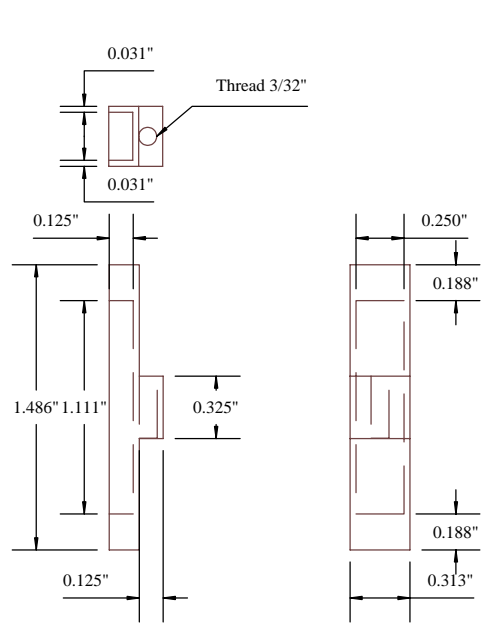
Title
William Fairbairn 10 hp Steam Engine

Scale

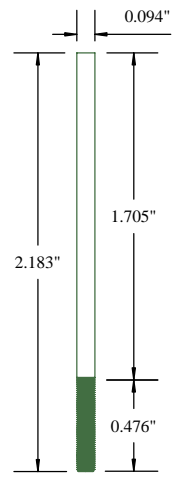
Date:



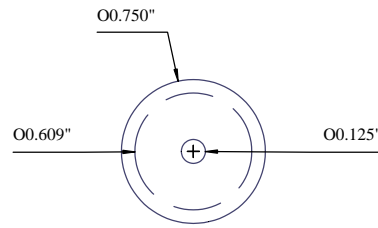
© **BOB HOLME**
 Engineering Service and Repair
 Mobile: AU 0466 979 291
 Int 61+466 979 291
 Email: Maryak@homemodelenginemachinist.com



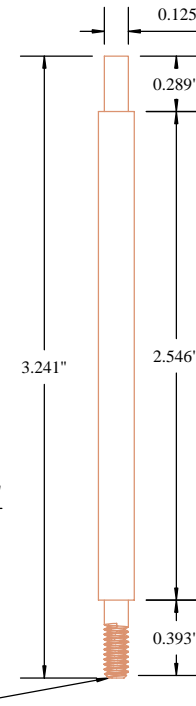
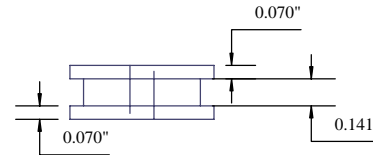
Valve



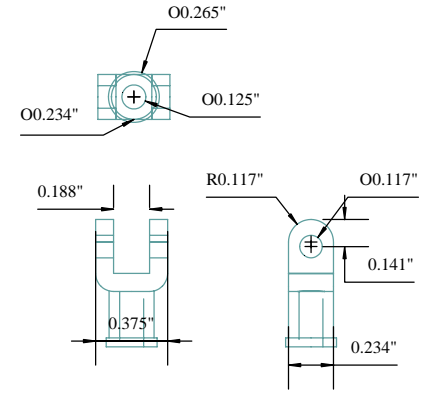
Valve Rod



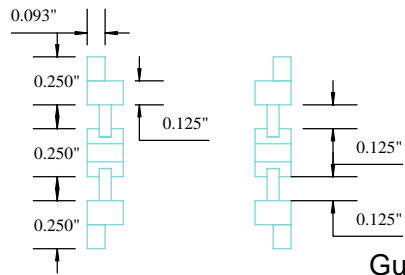
Piston



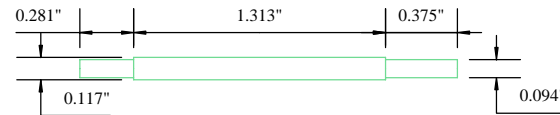
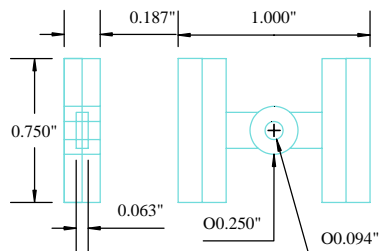
Piston Rod



Crosshead



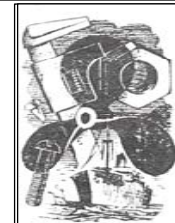
Guides x 2



Guide Rod

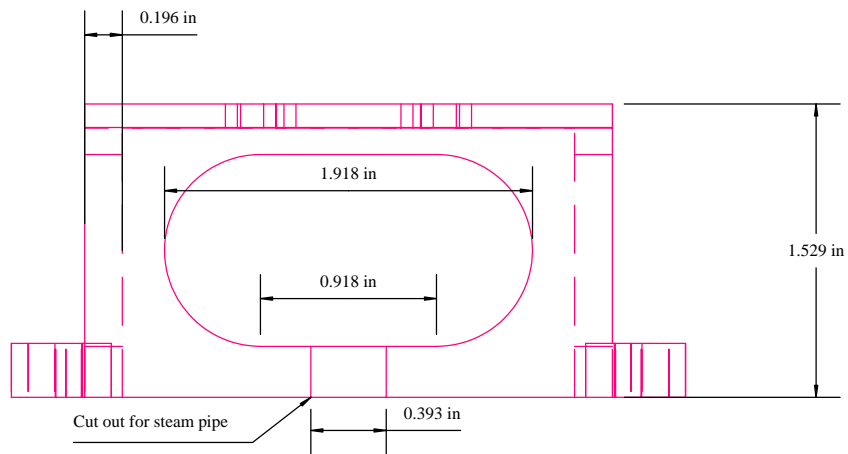
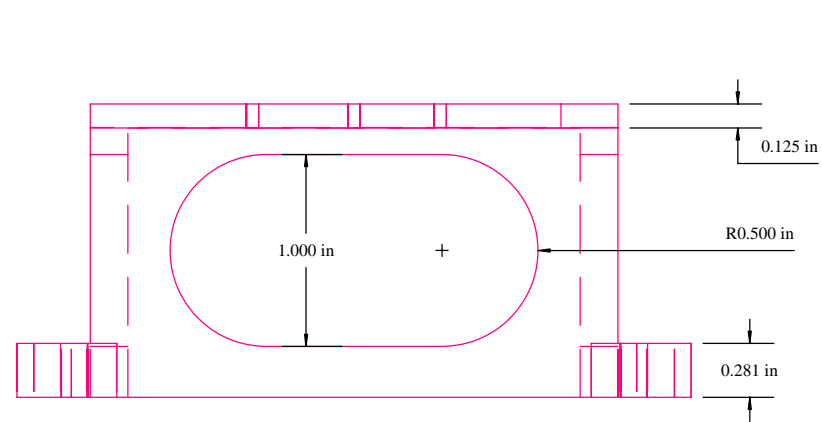
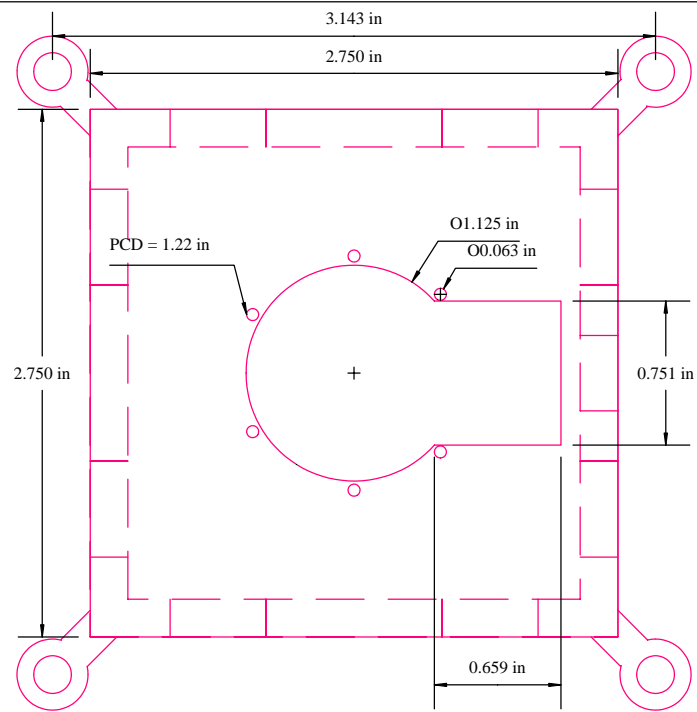
Part: Piston - Valve - Rods - Crosshead - Guides

Material Piston - Cast Iron..... Valve - Bronze
Rods - Steel..... Crosshead Bronze
Guides - Bronze



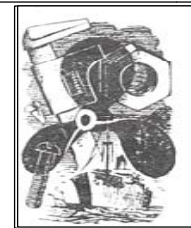
© **BOB HOLME**
Engineering Service and Repair
Mobile: AU 0466 979 291
Int 61+466 979 291
Email: Maryak@homemodelenginemachinist.com

			Title	William Fairbairn 10 hp Steam Engine	
			Scale	Date:	
REV	DATE		DESCRIPTION		



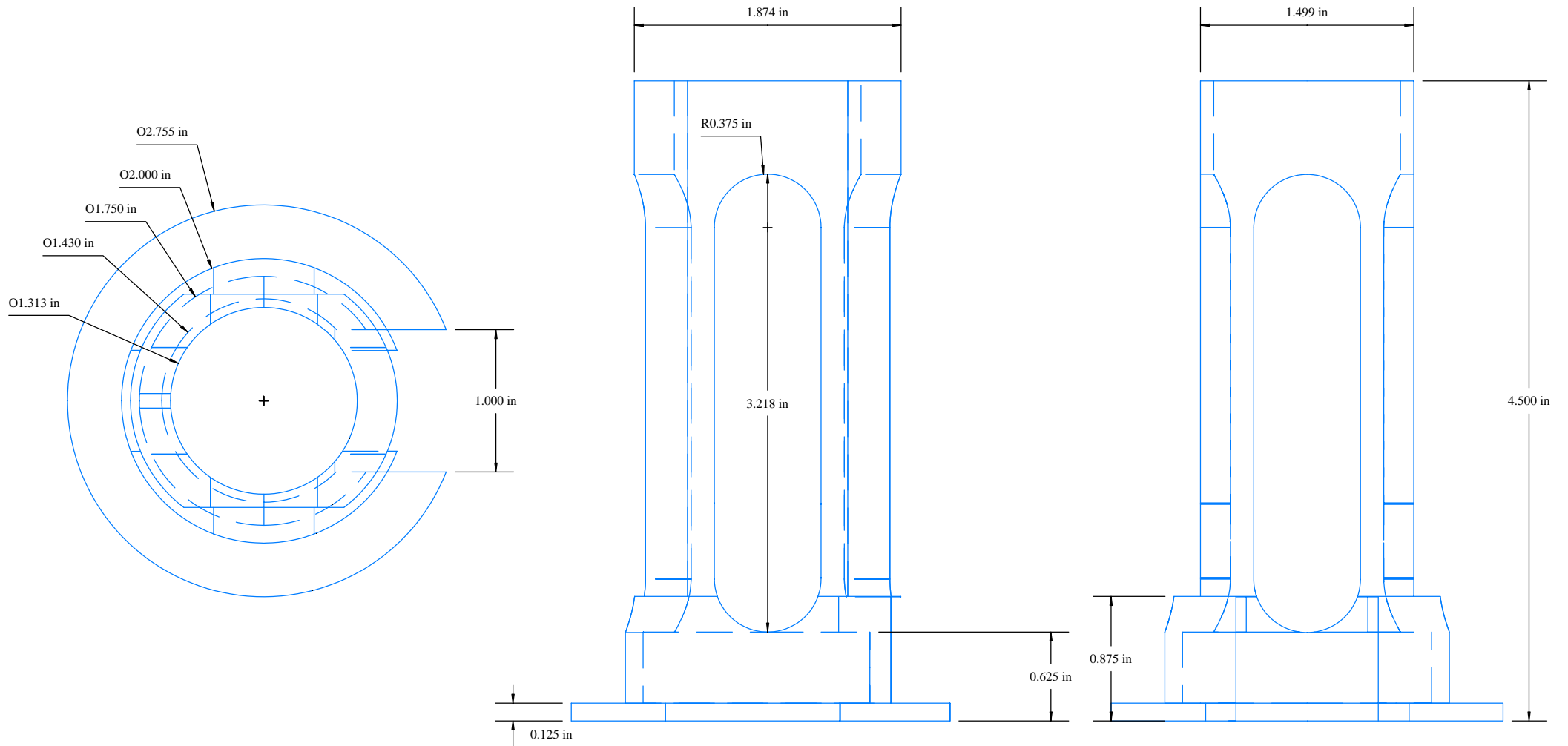
Part: **Engine Base**

Material: **Mild Steel**



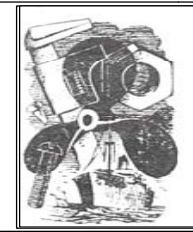
© **BOB HOLME**
 Engineering Service and Repair
 Mobile: AU 0466 979 291
 Int 61+466 979 291
 Email: Maryak@homemodelenginemachinist.com

			Title	William Fairbairn 10 hp Steam Engine	
			Scale	1" : 1"	Date:
REV	DATE	DESCRIPTION			



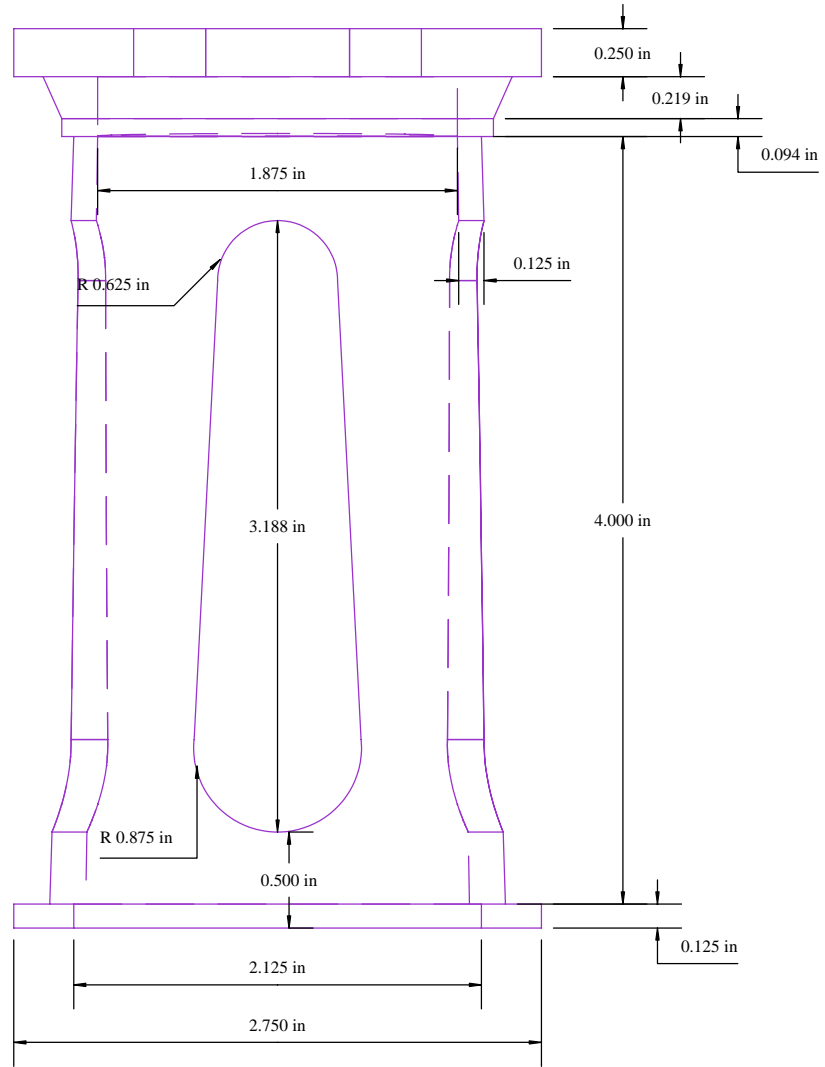
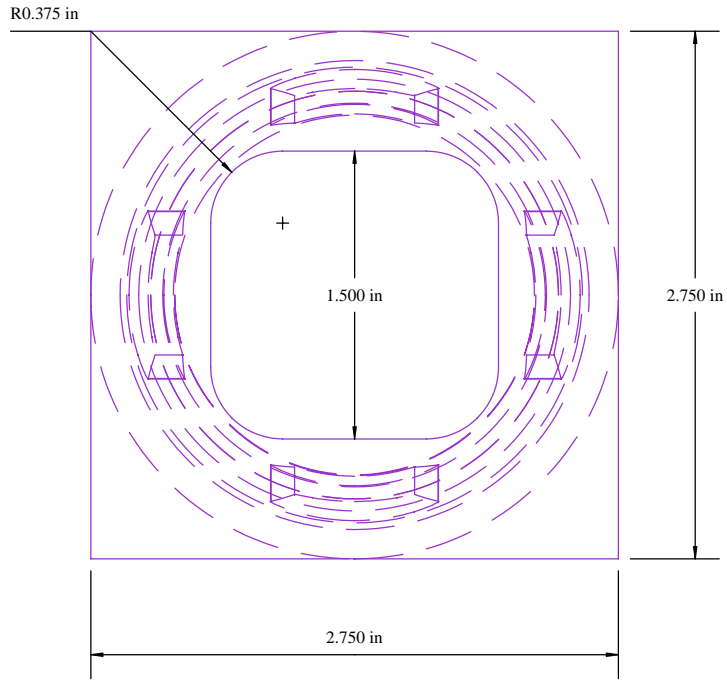
Part: **Guide Column**

Material: **Mild Steel**



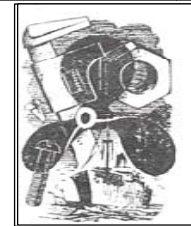
© **BOB HOLME**
 Engineering Service and Repair
 Mobile: AU 0466 979 291
 Int 61+466 979 291
 Email: Maryak@homemodelenginemachinist.com

			Title	William Fairbairn 10 hp Steam Engine	
			Scale	1" : 1"	Date:
REV	DATE		DESCRIPTION		



Part: Doric Column

Material: Aluminium



© **BOB HOLME**
 Engineering Service and Repair
 Mobile: AU 0466 979 291
 Int 61+466 979 291
 Email: Maryak@homemodelenginemachinist.com

REV	DATE	DESCRIPTION

Title: William Fairbairn 10 hp Steam Engine
 Scale: 1" : 1" Date: