

The remainder of the lever action
will depend on the location of
pipes and valves



Part:

Governor Assembly

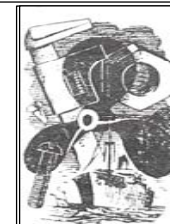
Material

REV	DATE	DESCRIPTION

Title William Fairbairn 10hp Steam Engine

Scale NTS

Date: 26 July 2011



©

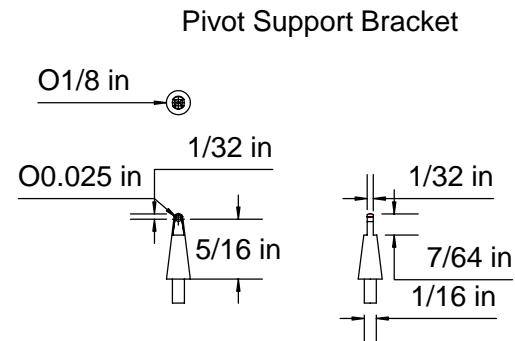
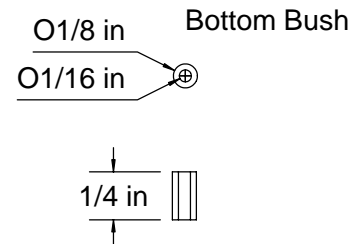
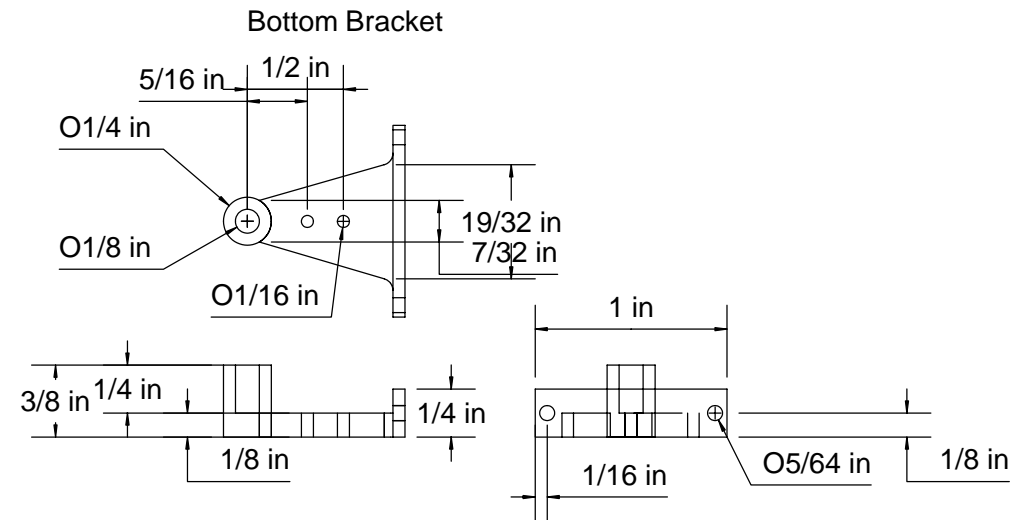
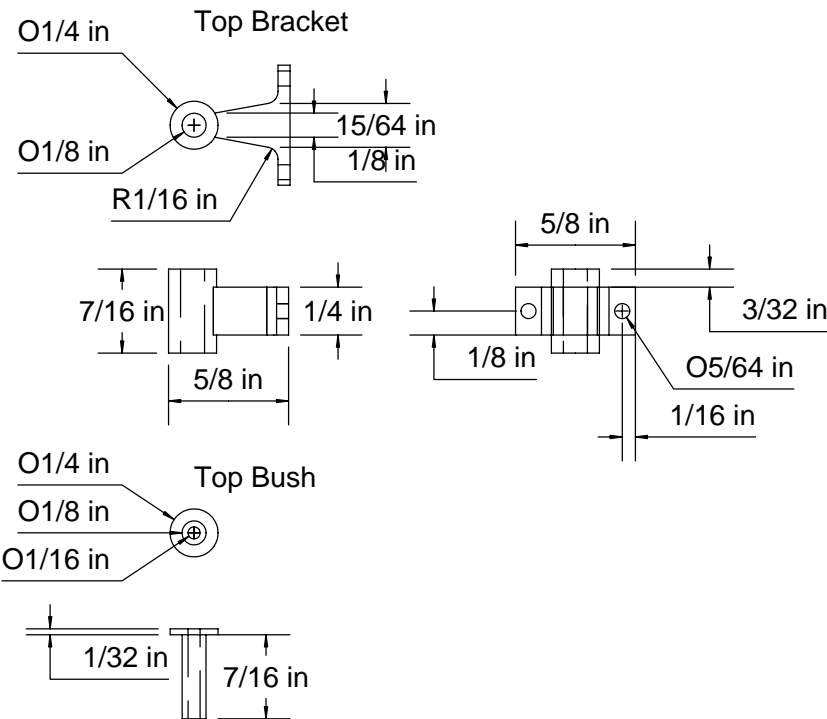
BOB HOLME

Engineering Service and Repair

Mobile: AU 0466 979 291

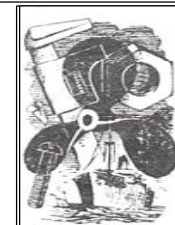
Int 61+466 979 291

Email: Maryak@homemodelenginemachinist.com



Part: Brackets and Bushes

Material: Brackets Mild Steel
Bushes Bronze.

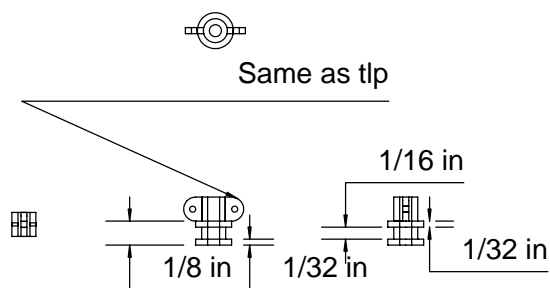
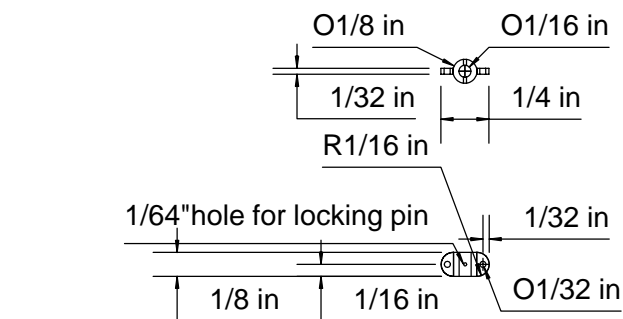


© **BOB HOLME**
Engineering Service and Repair
Mobile: AU 0466 979 291
Int 61+466 979 291
Email: Maryak@homemodelenginemachinist.com

REV	DATE	DESCRIPTION	Title	William Fairbairn 10hp Steam Engine
			Scale	1 : 1
			Date:	26 July 2011

Top Lever Pivot

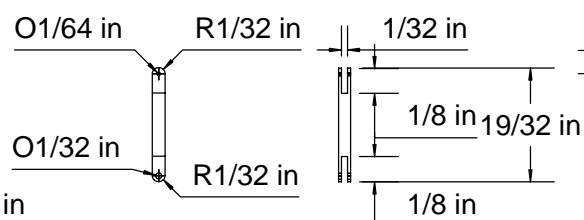
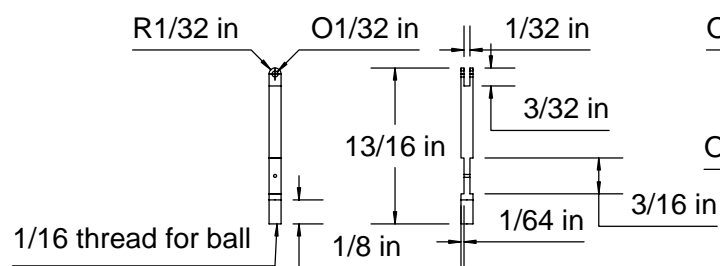
Bottom Lever Pivot



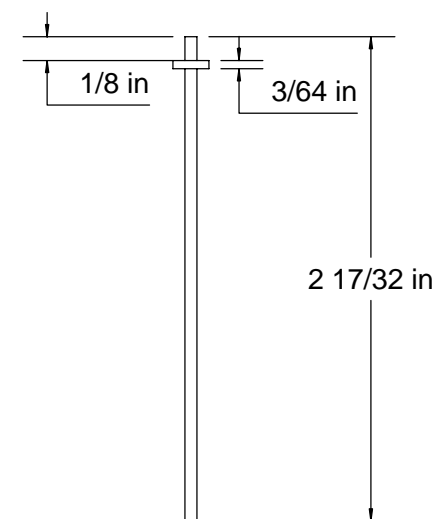
1/4" Sphere

O3/16 in

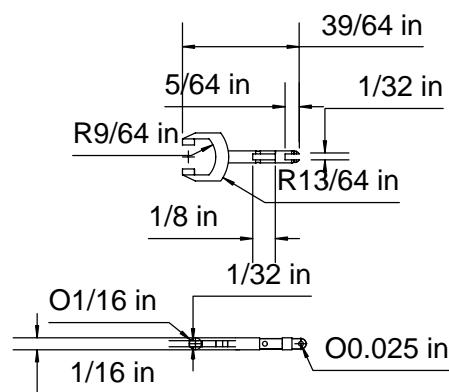
O1/16 in



1/16" thread for lever



Spindle



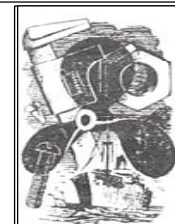
Actuator Arm

Part:

Ball levers and Pivots

Material

Mild Steel with Bronze balls



©

BOB HOLME

Engineering Service and Repair

Mobile: AU 0466 979 291

Int 61+466 979 291

Email: Maryak@homemodelenginemachinist.com

REV	DATE	DESCRIPTION

Title William Fairbairn 10hp Steam Engine

Scale 1 : 1

Date: 26 July 2011