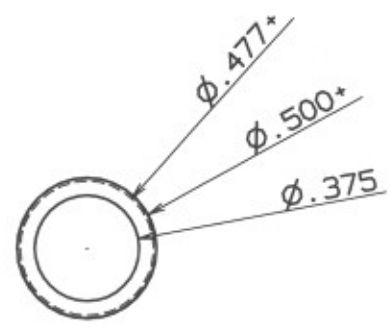
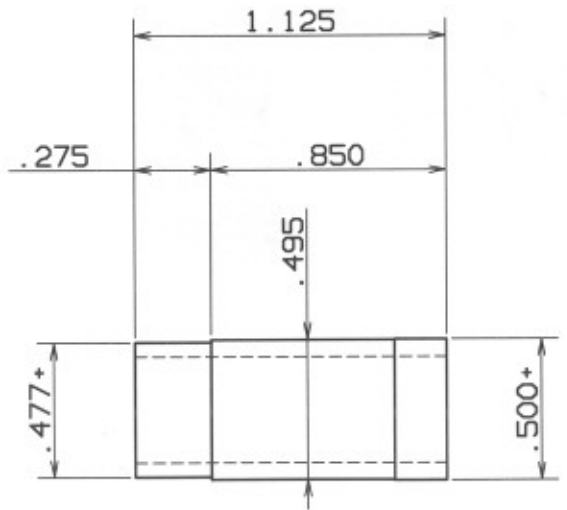
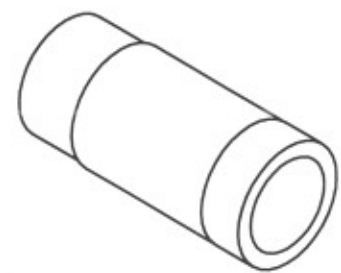


Assemble into frame by boiling frame
 in water and quickly dropping cold
 cylinder into frame
 Up to .002 interference fit.



Cast Iron, Steel, or SS

Lakeshore
 Machine & Repair
 8677 Paradise Beach Rd.
 Granger, IN 46031

This print is not for sale. It may be distributed freely for any noncommercial use.	DRAWN	A Tougas	DATE	02/20/2010	DWG NAME	Cylinder	
	CHECKED		BY		DWG NO.		REV B
	DESIGN		SCALE	None	SHEET	3	OF