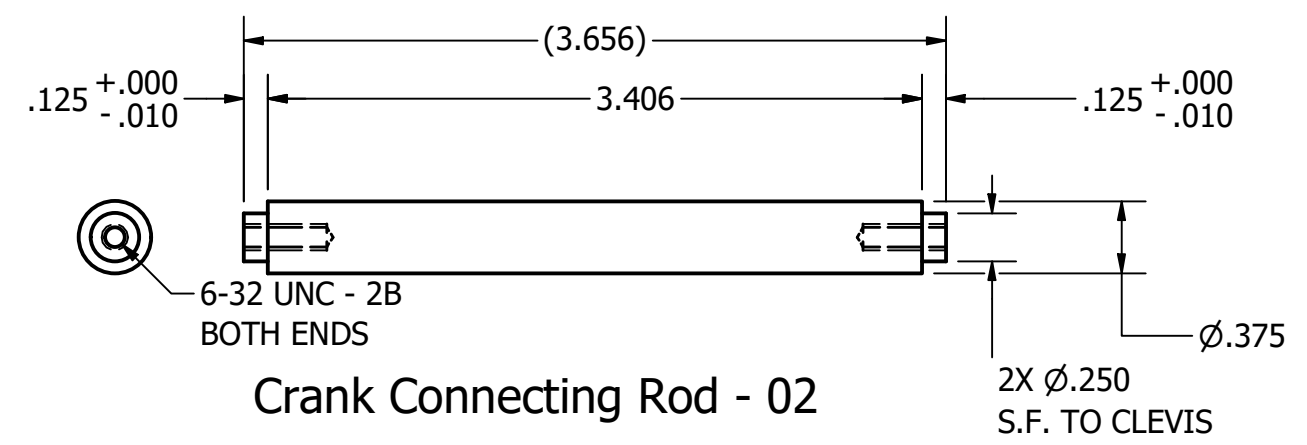
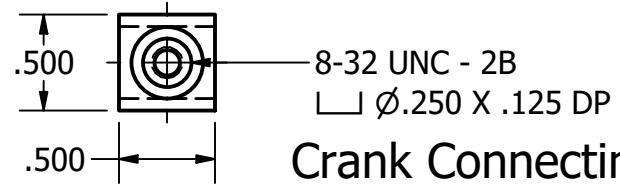
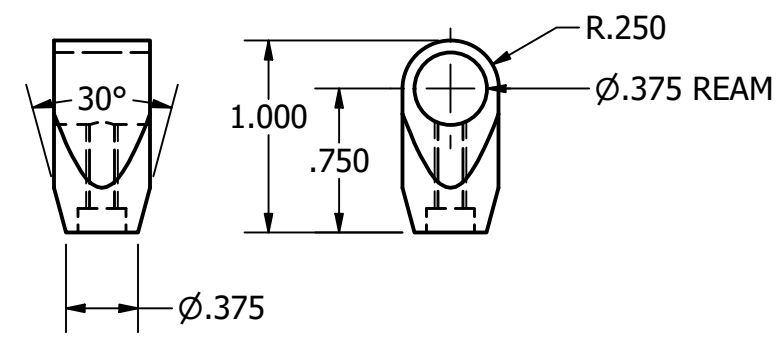


Crank Connecting Rod

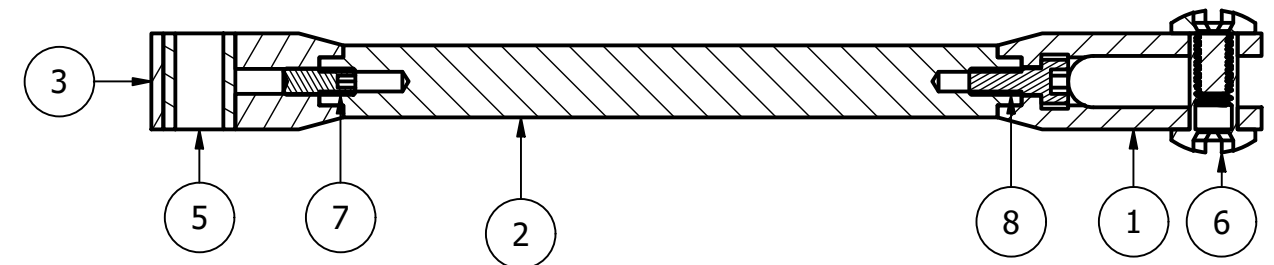
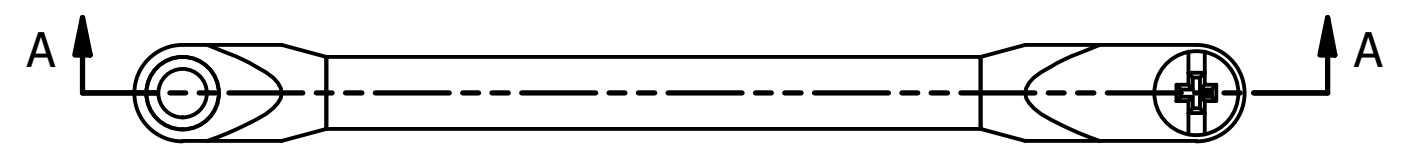


Crank Connecting Rod - 02



Crank Connecting Rod - 03

PARTS LIST			
ITEM	QTY	PART NUMBER	DESCRIPTION
1	1	Crank Connecting Rod	MATERIAL: 6061 AL
2	1	Crank Connecting Rod - 02	MATERIAL: BRASS OR AL
3	1	Crank Connecting Rod - 03	MATERIAL: 6061 AL
5	1	Bearing, Sleeve, .250 ID x .375 OD x .50 THK	
6	1	Sex Bolt - .250 OD x .50 LG - McM 98002A203	
7	1	0606COPS	8-32 X 3/8 CUP POINT SETSCREW
8	1	0606SHCS	#6-32 X 3/8" LG SHCS



SECTION A-A

DRAWN Rob	4/3/2022	Chirico Engine Works		
CHECKED		TITLE		
QA		CRANK CONNECTING ROD ASSEMBLY		
MFG		SIZE B	DWG NO	REV
APPROVED		Assy - Crank Connecting Rod		
		SCALE	SHEET 1 OF 1	