

CLASSIC ESL 9

Stat Panel Replacement (Page 1 of 4)

Replacement Parts (included):

1 x Stat panel

Tools required (not included):

3mm ball-point hex driver

Warning! Unplug AC power before attempting this procedure!

1. Remove the four screws connecting the top strut to the pillars with a 3mm hex driver.

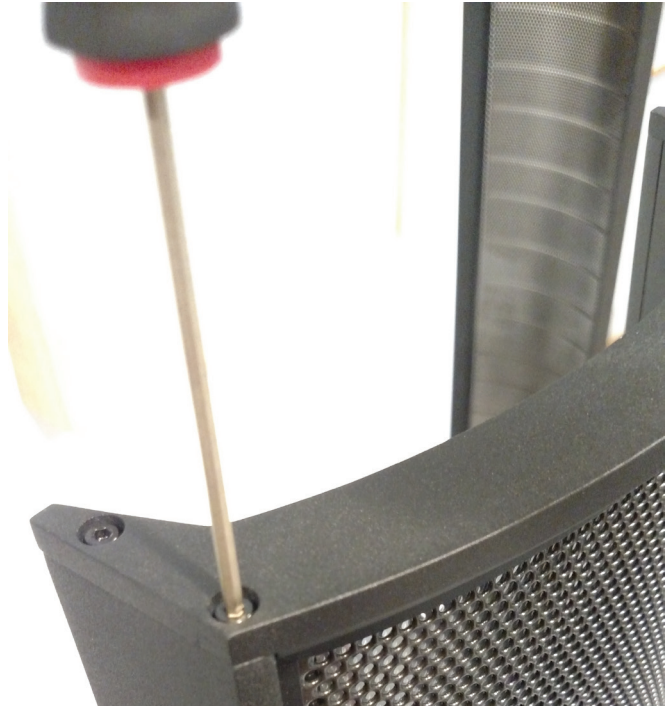


Figure 1

2. Remove top strut.



Figure 2

3. Remove top strut insulator.



Figure 3

c l s e l e c t r o s t a t i c



MARTIN LOGAN®

Lawrence, Kansas, USA tel 785.749.0133 fax 785.749.5320 www.martinlogan.com

CLASSIC ESL 9

Stat Panel Replacement (Page 2 of 4)

4. Shift stat panel upward in air frame a couple inches.
5. Remove back wave pad through gap created in step above.



Figure 4

6. Fish out stat panel harness connector and disconnect.

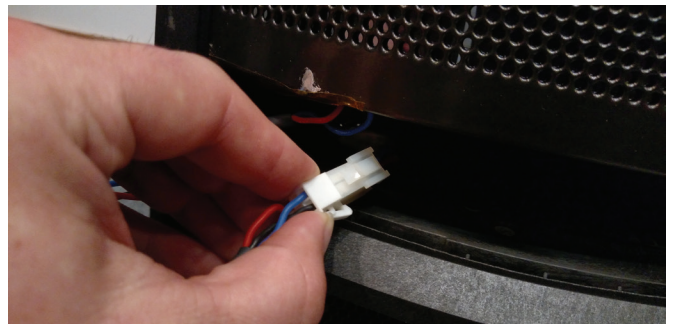


Figure 5

7. Continue removing stat panel by pulling it upward 1/4 to 2/3 of the way up the AirFrame.



Figure 6

c l s e l e c t r o s t a t i c



MARTIN LOGAN®

Lawrence, Kansas, USA tel 785.749.0133 fax 785.749.5320 www.martinlogan.com

CLASSIC ESL 9

Stat Panel Replacement (Page 3 of 4)

8. Gently spread pillars and pull stat panel out of one of the side pillar insulators.
9. Remove panel from other side insulator.



Figure 7



Figure 8

10. Start new panel into the AirFrame the same way the old one came out.
11. When set into both side insulators slide stat panel down a couple inches above top of cabinet.
12. Make sure stat panel wire harness wires are directed straight down to prevent binding between stat panel and cabinet.
13. Slide stat panel down an inch past top of cabinet.



Figure 9

c l s e l e c t r o s t a t i c



MARTIN LOGAN®

Lawrence, Kansas, USA tel 785.749.0133 fax 785.749.5320 www.martinlogan.com

CLASSIC ESL 9

Stat Panel Replacement (Page 4 of 4)

14. Connect panel harness and guide wires from panel up along the back side of panel to fit into mid-strut channel properly.



Figure 10

15. Replace back wave pad tucking wire harness behind and around the end of the pad.
16. Gently slide stat panel down and seat into mid-strut.
17. Fit top strut insulator over top stat panel.
18. Replace top strut and secure with the four screws.

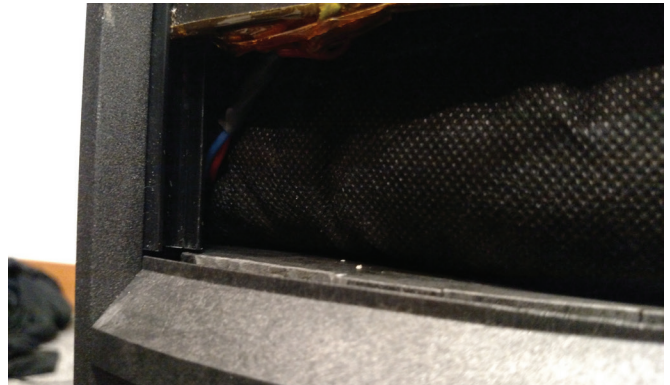


Figure 11

c l s e l e c t r o s t a t i c



MARTIN LOGAN®

Lawrence, Kansas, USA tel 785.749.0133 fax 785.749.5320 www.martinlogan.com