

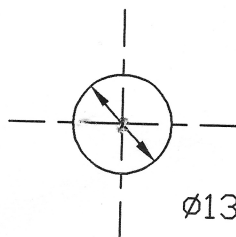
①

20mm

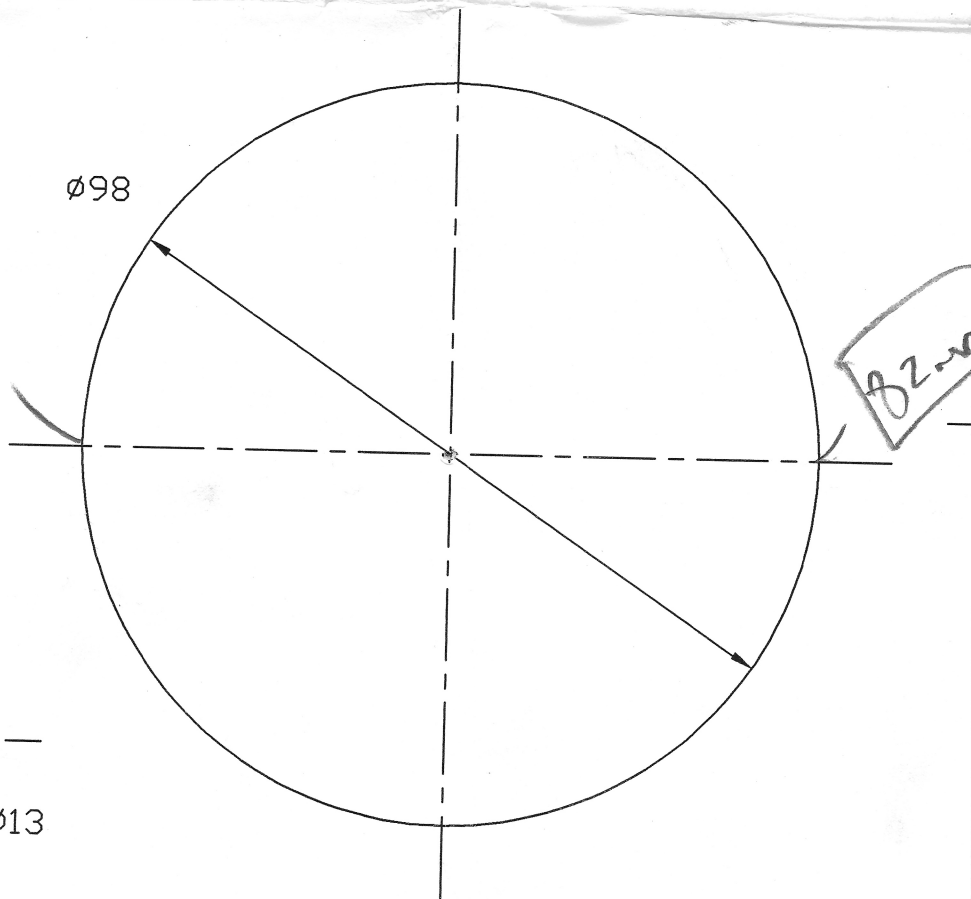
ø98

70mm

82mm



ø13

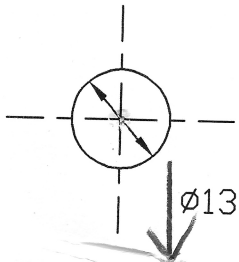


TOP OF

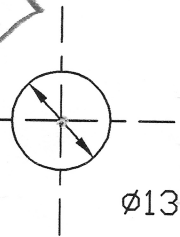
②

115mm

200mm



$\varnothing 13$



$\varnothing 13$

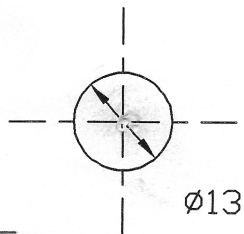
GUARD (1)

③

Hint: Align an
the side of gu
alignment gui

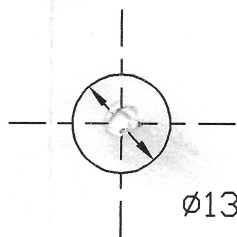


ENSURE THA
THE CONTO

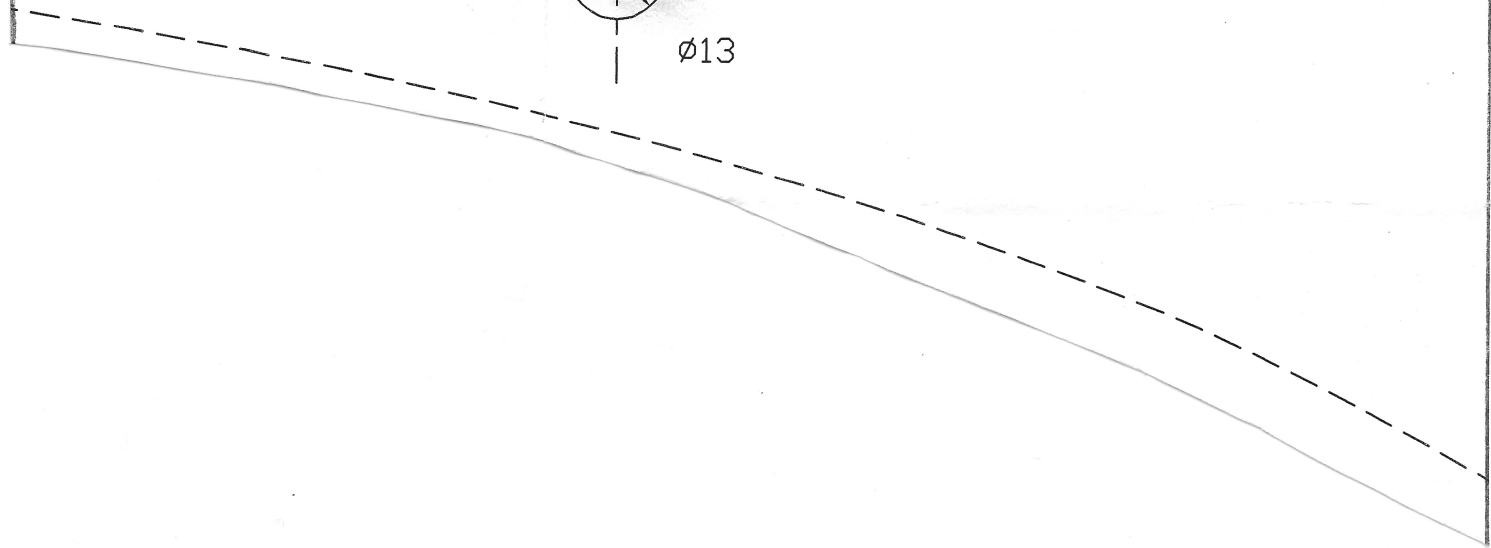


Ø13

200mm

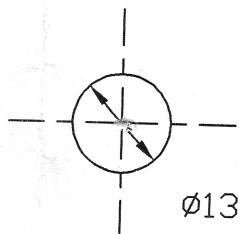


Ø13



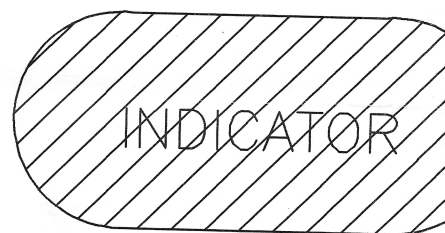
d tape top of guard first (1), then
ard (2) and use indicator as
de.

AT THE TEMPLATE FOLLOWS
UR OF THE GUARD

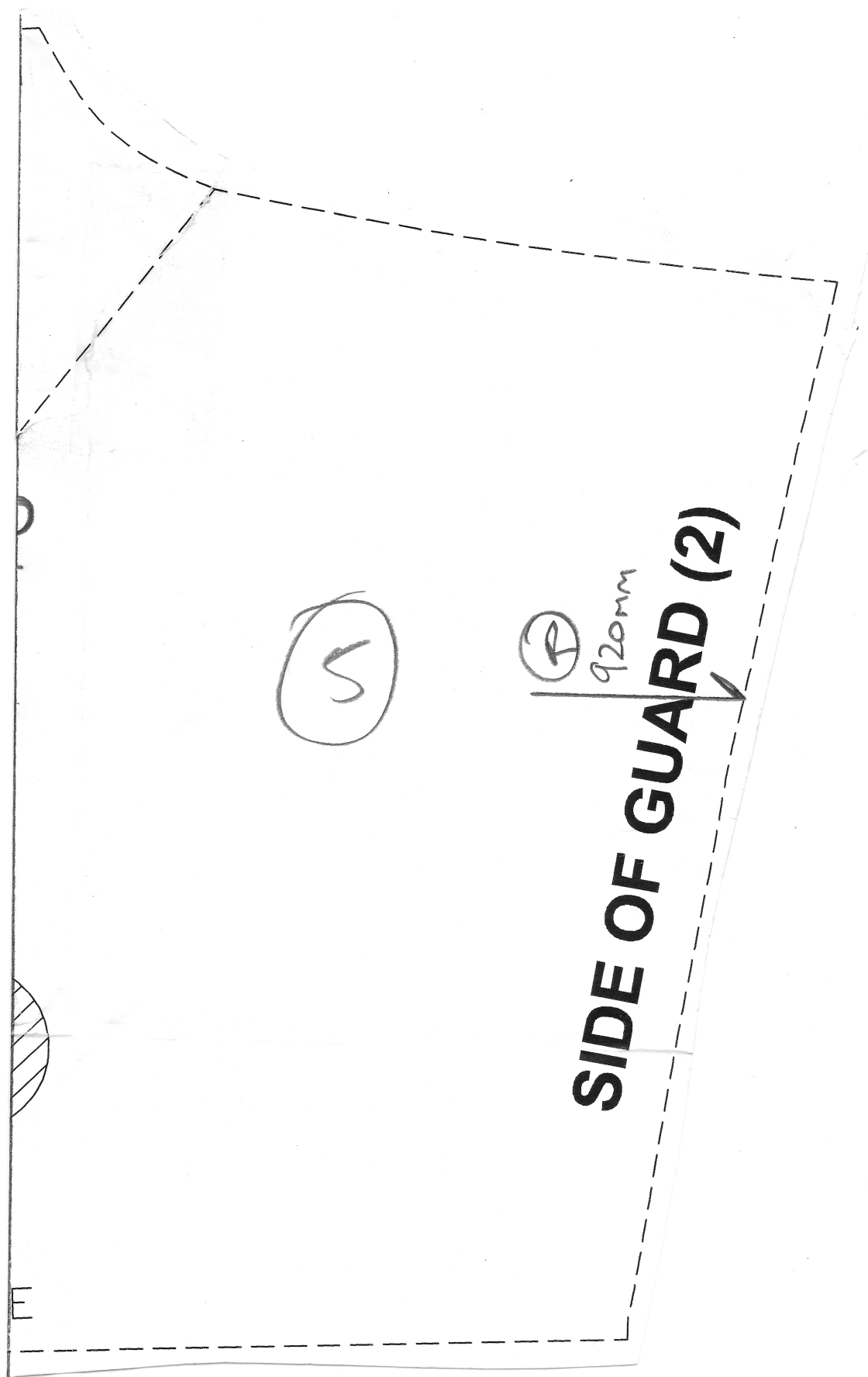


200mm

4



GUARD LIN



S

P

920mm

SIDE OF GUARD (2)